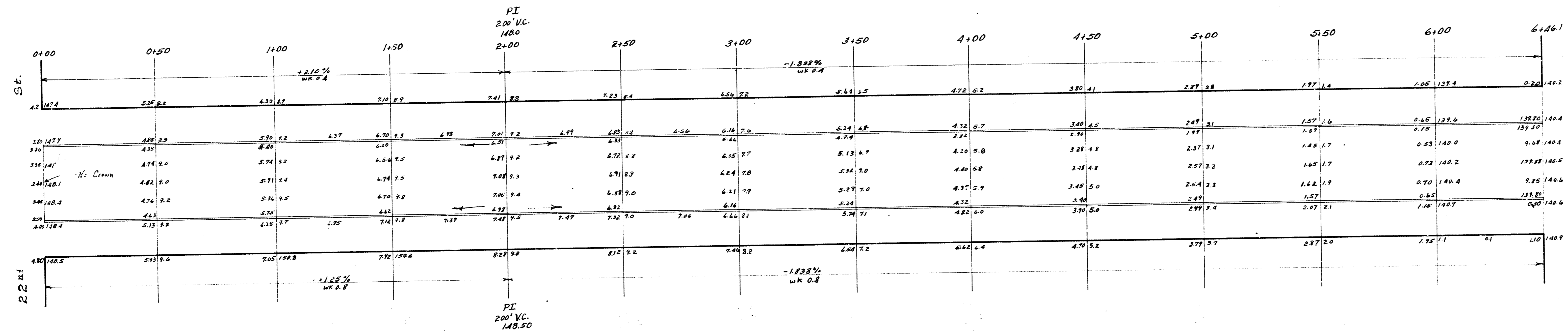
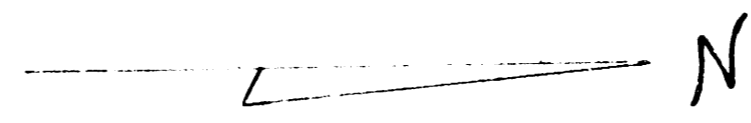


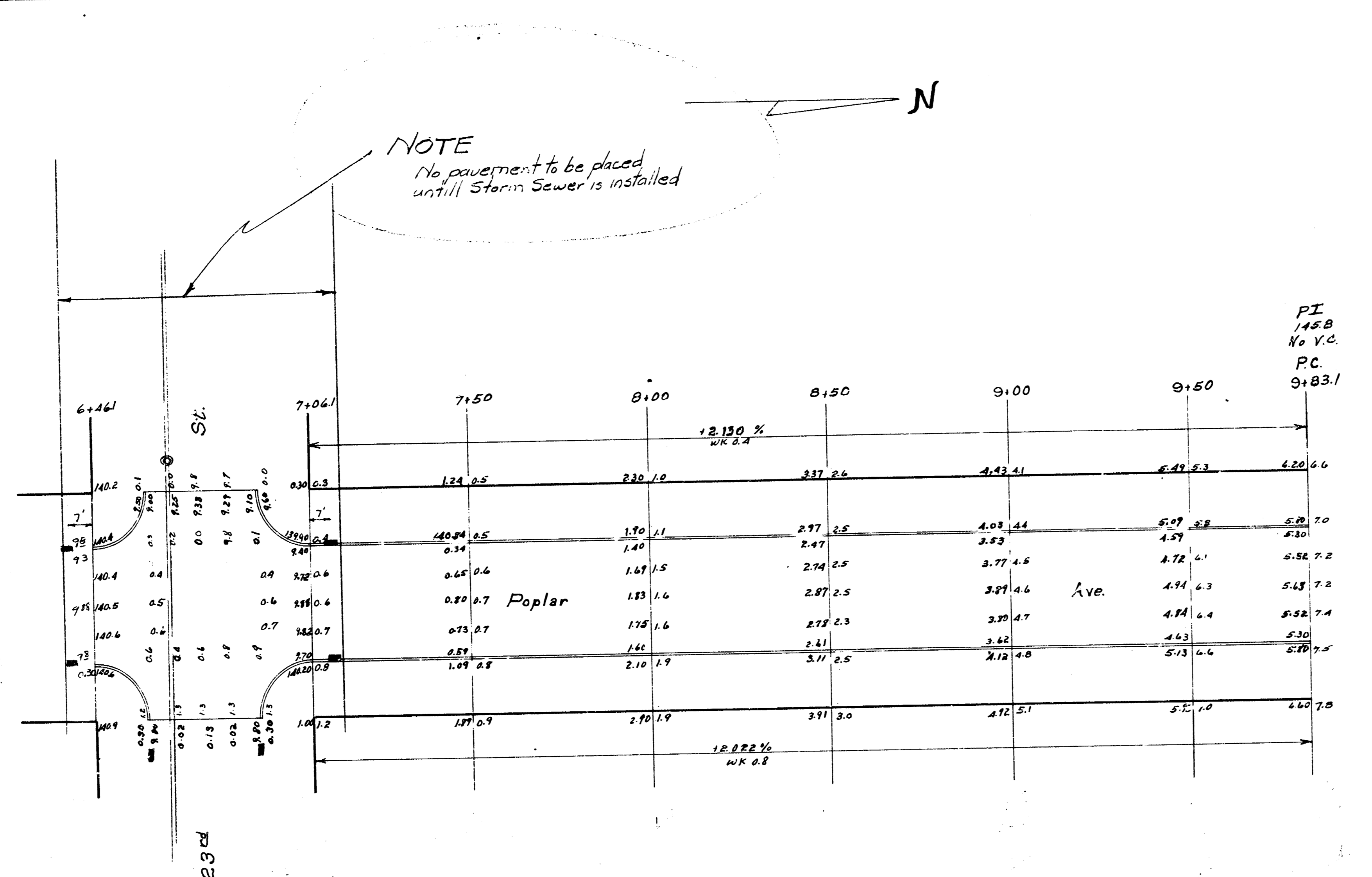
B.M. 133.55 in Globe E. of Grove, S.W. of 21<sup>st</sup>  
 148.57 Iron, N.E. 22<sup>nd</sup> E. Poplar



1/3

**POPLAR AVE.**  
 N.L. 22<sup>nd</sup> SL. Prince  
 30' conc. f. cb.  
 City of Wichita, Kansas  
 L.K. White City Engineer  
 Sept. 1951 Proj No. C11 72





2/3

POPLAR AVE.

