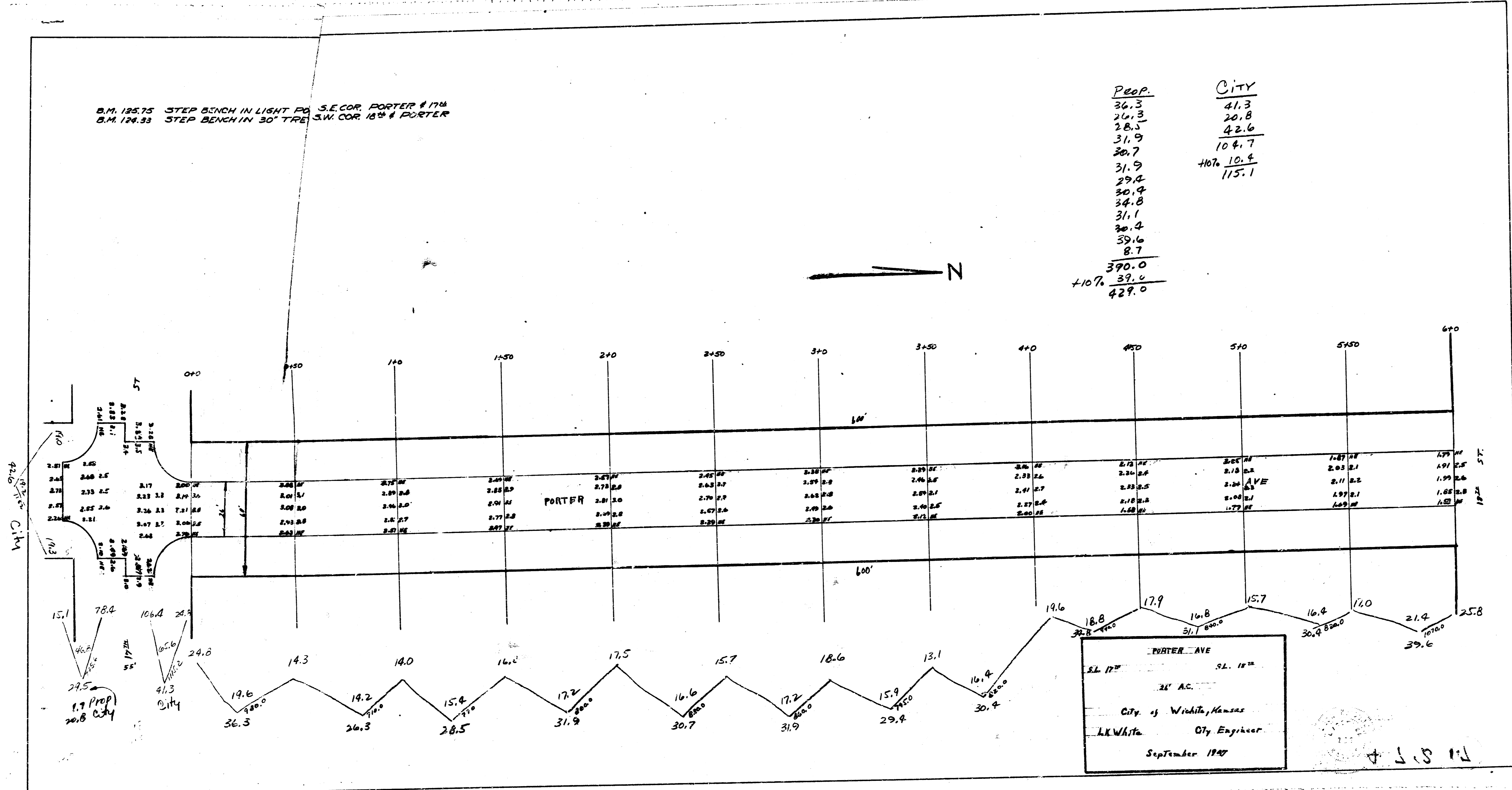


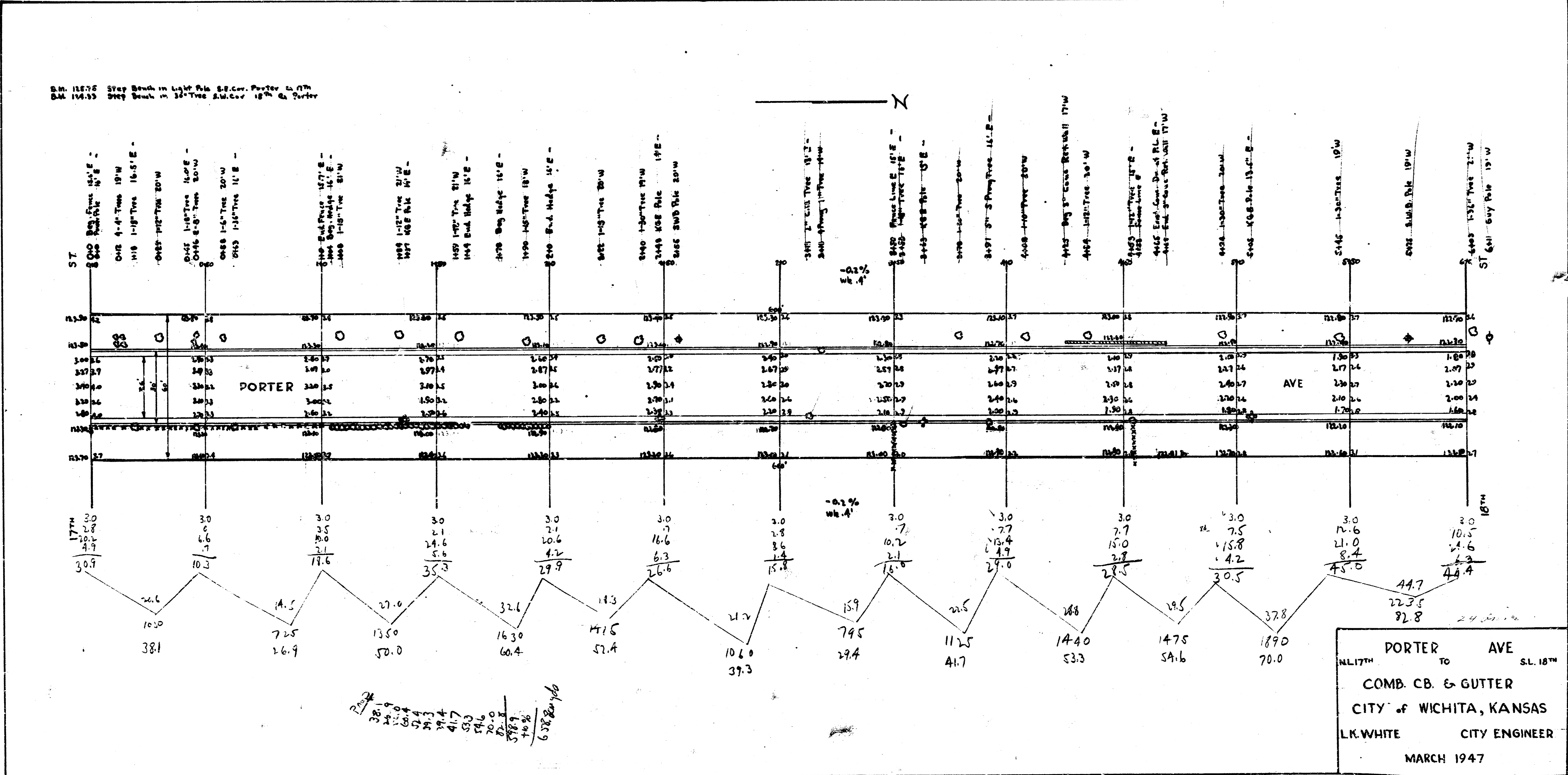
B.M. 125.75 STEP BENCH IN LIGHT PO S.E. COR. PORTER # 174  
 B.M. 126.33 STEP BENCH IN 30' TREE S.W. COR. 18th & PORTER

Peop.	City
36.3	41.3
26.3	20.8
28.5	42.6
31.9	104.7
30.7	107.6
31.9	10.4
29.4	115.1
30.4	
34.8	
31.1	
30.4	
39.6	
8.7	
390.0	
+10% 39.0	
429.0	



71.5.14

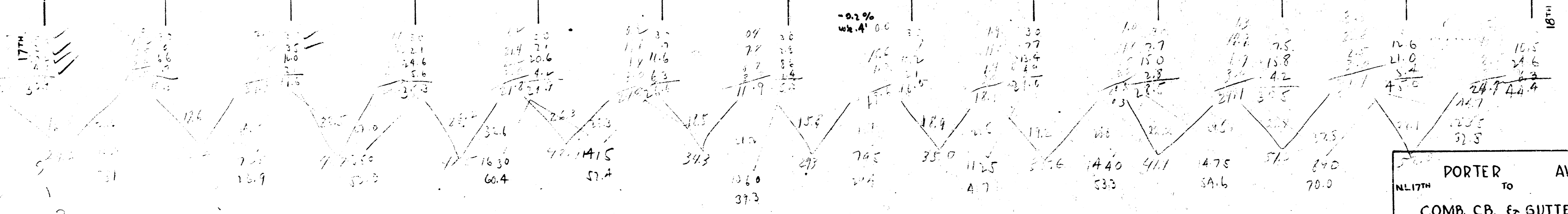
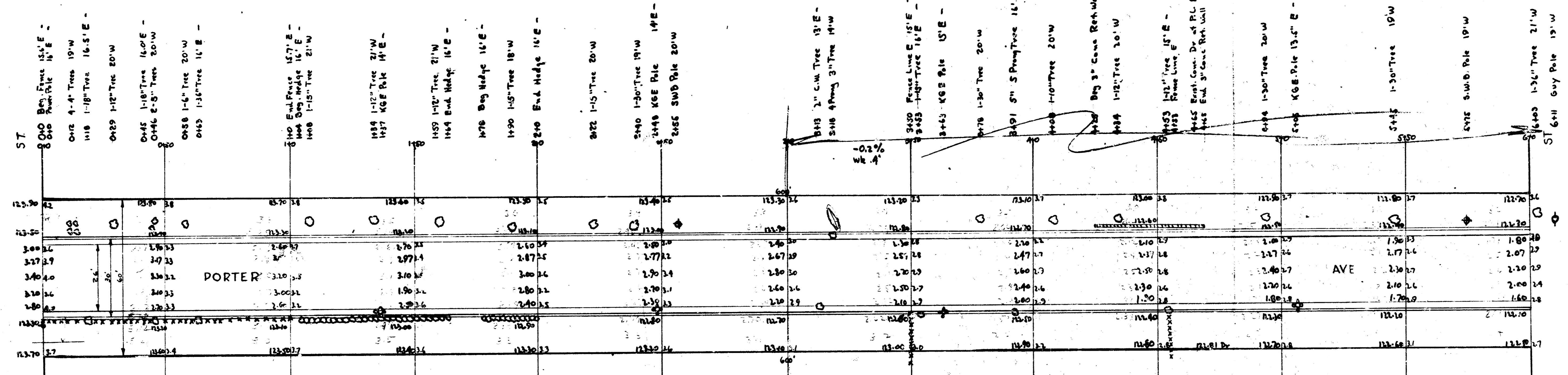
B.M. 127.75 5' Top Bench in Light Pole S.W. Cor. Porter to 17th  
 B.M. 124.55 5' Top Bench in 30" Tree S.W. Cor. 18th & Porter



PORTER AVE  
 TO S.L. 18th  
 COMB. CB. & GUTTER  
 CITY OF WICHITA, KANSAS  
 L.K. WHITE CITY ENGINEER  
 MARCH 1947

5989 +10% C. 38.8

S.M. 11875 Step Down in Light Pole S.E. Cor. Porter & 17th  
 S.M. 12433 Step Down in 30" Tree S.W. Cor. 18th & Porter



PORTER AVE  
 NL 17th TO SL 18th  
 COMB. CB. & GUTTER  
 CITY OF WICHITA, KANSAS  
 L.K. WHITE CITY ENGINEER  
 MARCH 1947

Handwritten notes and calculations, including a table of values:

28.1	28.1
28.7	28.7
29.4	29.4
30.1	30.1
30.8	30.8
31.5	31.5
32.2	32.2
32.9	32.9
33.6	33.6
34.3	34.3
35.0	35.0
35.7	35.7
36.4	36.4
37.1	37.1
37.8	37.8
38.5	38.5
39.2	39.2
39.9	39.9
40.6	40.6
41.3	41.3
42.0	42.0
42.7	42.7
43.4	43.4
44.1	44.1
44.8	44.8
45.5	45.5
46.2	46.2
46.9	46.9
47.6	47.6
48.3	48.3
49.0	49.0
49.7	49.7
50.4	50.4
51.1	51.1
51.8	51.8
52.5	52.5
53.2	53.2
53.9	53.9
54.6	54.6
55.3	55.3
56.0	56.0
56.7	56.7
57.4	57.4
58.1	58.1
58.8	58.8
59.5	59.5
60.2	60.2
60.9	60.9
61.6	61.6
62.3	62.3
63.0	63.0
63.7	63.7
64.4	64.4
65.1	65.1
65.8	65.8
66.5	66.5
67.2	67.2
67.9	67.9
68.6	68.6
69.3	69.3
70.0	70.0
70.7	70.7
71.4	71.4
72.1	72.1
72.8	72.8
73.5	73.5
74.2	74.2
74.9	74.9
75.6	75.6
76.3	76.3
77.0	77.0
77.7	77.7
78.4	78.4
79.1	79.1
79.8	79.8
80.5	80.5
81.2	81.2
81.9	81.9
82.6	82.6
83.3	83.3
84.0	84.0
84.7	84.7
85.4	85.4
86.1	86.1
86.8	86.8
87.5	87.5
88.2	88.2
88.9	88.9
89.6	89.6
90.3	90.3
91.0	91.0
91.7	91.7
92.4	92.4
93.1	93.1
93.8	93.8
94.5	94.5
95.2	95.2
95.9	95.9
96.6	96.6
97.3	97.3
98.0	98.0
98.7	98.7
99.4	99.4
100.1	100.1