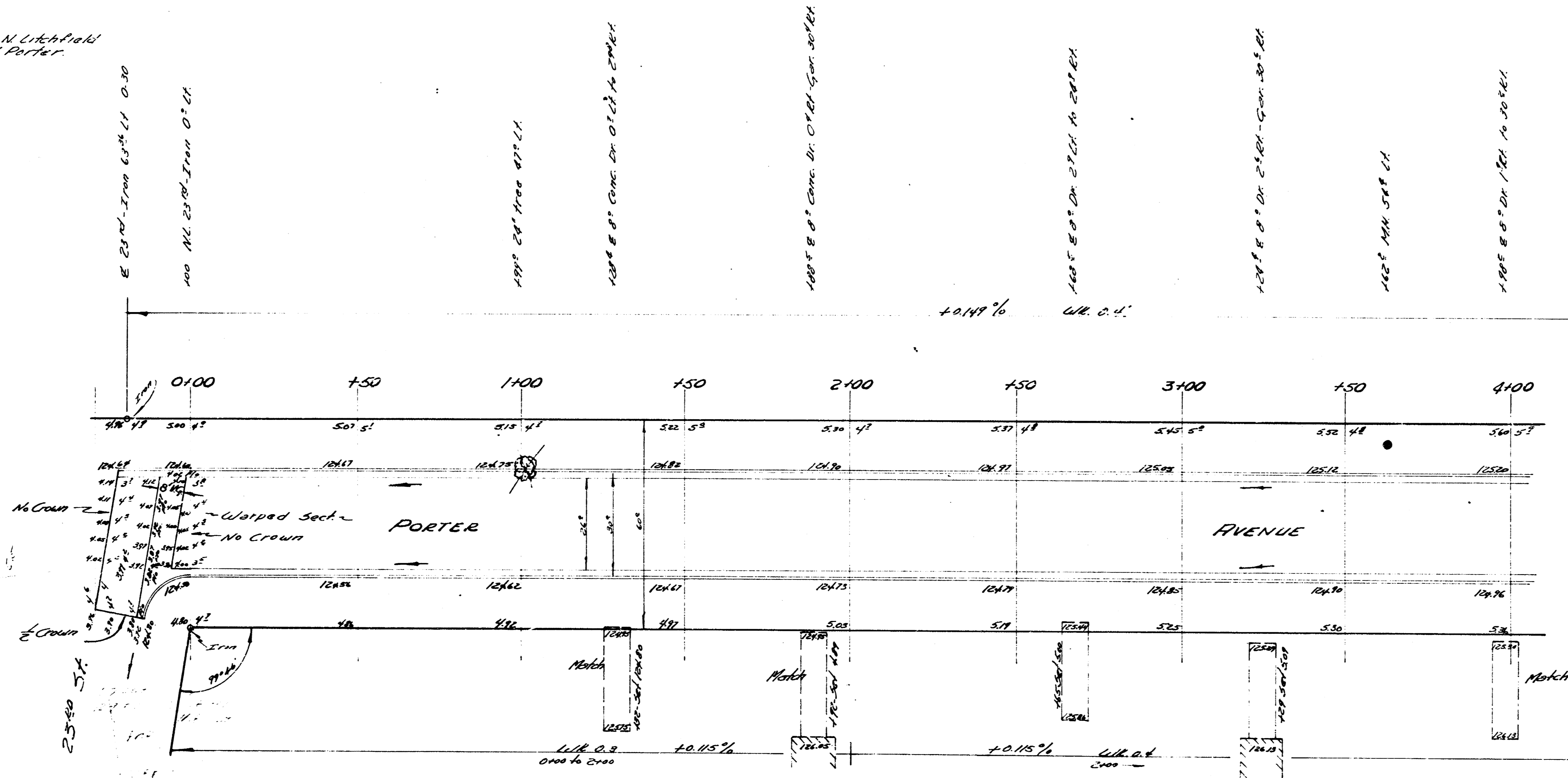
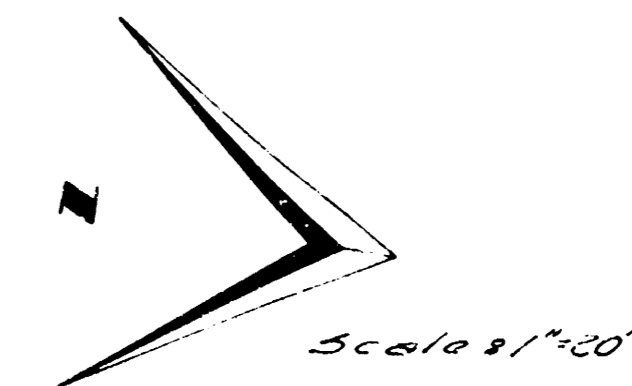


BM# 127 5.41 Cor. Conc. Parb. Has # 2408 N. Litchfield
 BM# 127 5.42 Cor. Conc. Parb. Has # 3410 N. Porter



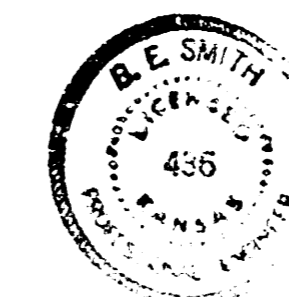
Surveyed by B.E. Smith
 Plan No. 456
 City of Wichita
 June 1953

NOTE: Charting No. on E. P.

24
 25
 26
 27
 28
 29
 30
 31
 32

Vertical Curve Data

Station	Grade	Point	Elev.
1+00	+10%	B.P.	42.1
1+50	+10%	P.I.	42.1
2+00	+10%	E.P.	42.1
2+50	+10%	B.P.	42.1
3+00	+10%	P.I.	42.1
3+50	+10%	E.P.	42.1
4+00	+10%	B.P.	42.1



PORTER AVE.
 & 23RD TO N.L. 24TH
 26-2-30 AC.
 City of Wichita
 B.E. Smith City Engineer
 June '53 Proj No. C12-276

1/3

