

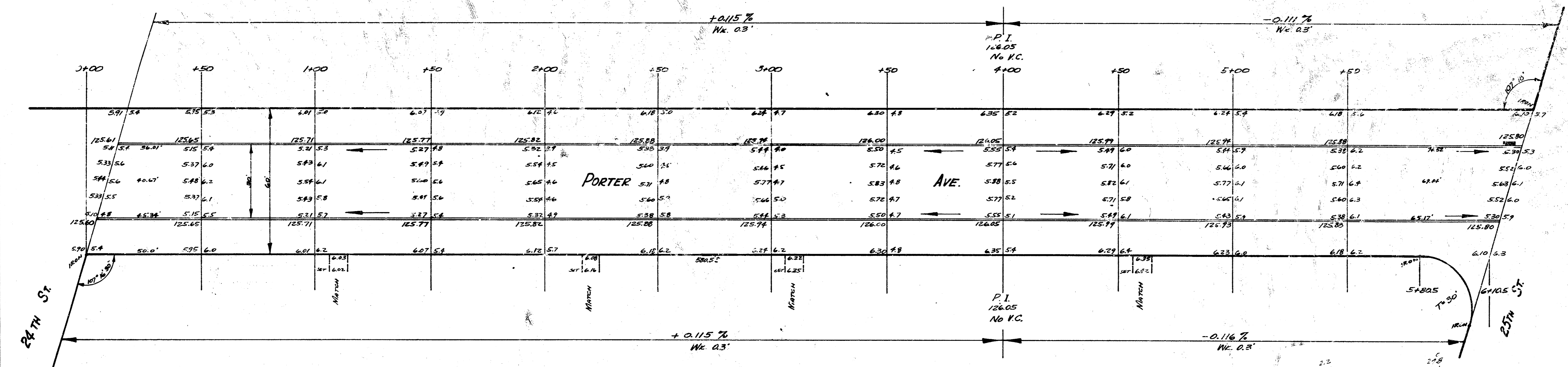
B.M. 128.21 S.W. Cor. Porch Ho. #2508 PORTER
 B.M. 129.54 S.W. Cor. Porch Ho. #2530 PORTER

STATIONING ON E.P.L.

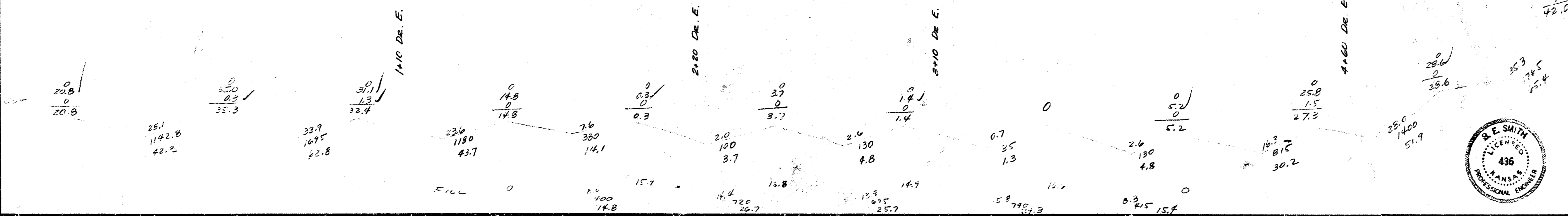
Elev. (Cont. Cont.)		E.V.C.	
Stn.	Elev.	Stn.	Elev.
111.9	111.9	420.7	0
116.70	116.70	420.7	0
123.1	123.1	422.8	21.405

TIES TO E. IRON:
 71.30' N. 11.1° E. TO S.W. COR. HO.
 87.77' N. 1.5° E. TO S.E. COR. HO.

TIES TO W.P.L. IRON:
 15.13' N. TO FACE OF FOLD
 126.35' W. 11.1° W. TO FACE OF FOLD.



400
 400
 400



PORTER AVE.
 N.L. 24TH TO S.L. 25TH
 30' CONC & CS

CITY OF WICHITA, KANSAS
 B.E. SMITH CITY ENGINEER
 JAN. 13, 1953 PROJ. No. C.12-180

