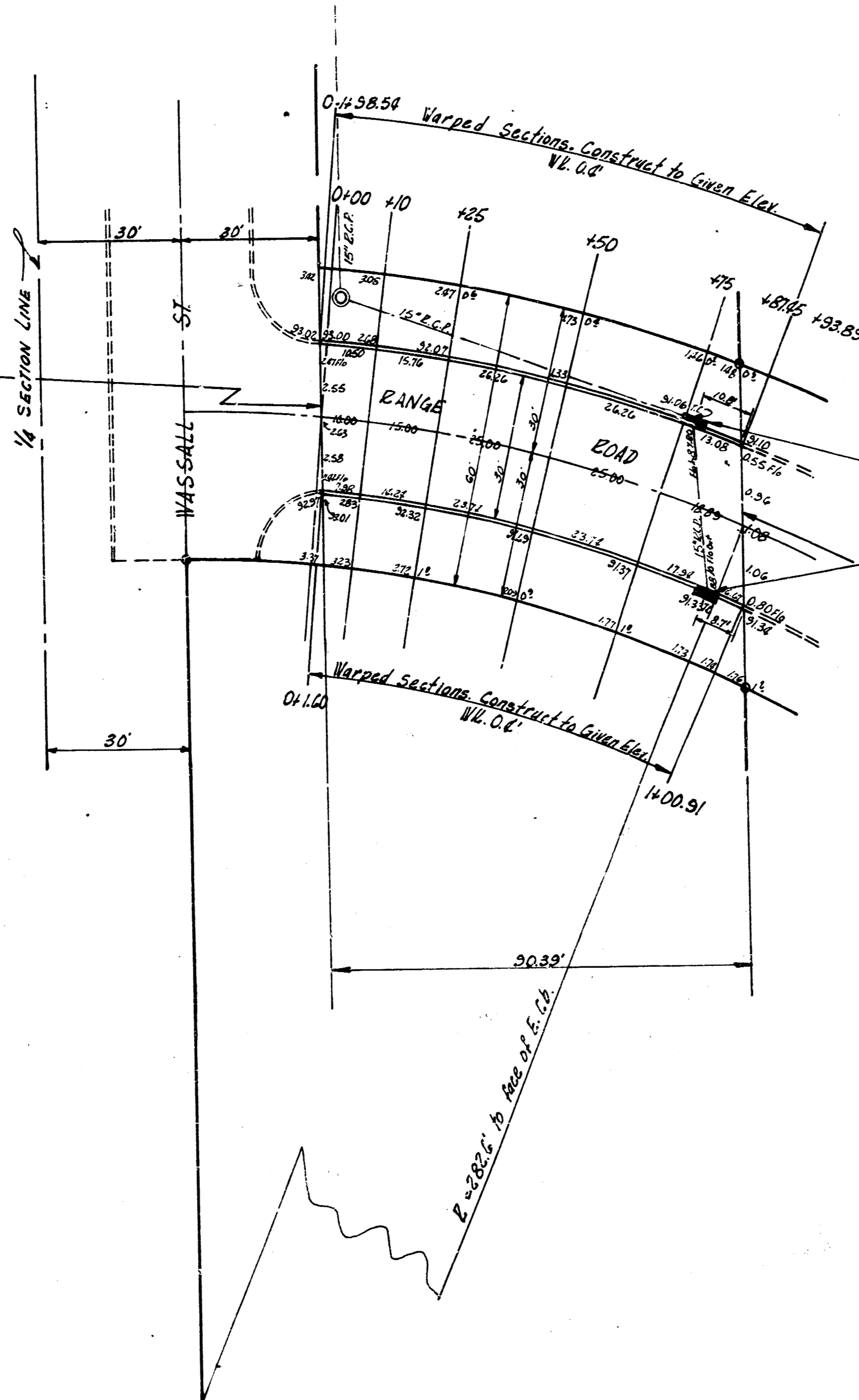


B.M. 9257 Step BM. N.S. Elm Tree 78° E. of Dry Creek Bridge
on Wassall 42° N. of R.R. Tracks.

Stationed on E. of Range Rd.

MATCH EXISTG. PVT.



NOTE:
Catch basins to be constructed
with Incidental Drainage on
Wassall St, Proj. No. C15-297

MATCH EXISTG. PVT.

Curve Data from Sta 0+488.54 to Sta 0+874.5 & from Sta 0+100
to Sta 1+00.91; Sta. ON Δ , $E=2.976$, $A=18^{\circ}04'34''$

Sta	Chord Lgh. or S. Offset V.C.	Chord Lgh. or S. Offset E.C.	Deflection Angle	Total Angle Deflection
0+488.54				
0+10	12.23		1° 06' 18"	1° 06' 18"
+25	14.05		1° 26' 38"	2° 32' 56"
+50	22.76		2° 28' 24"	4° 57' 20"
+75	26.76		2° 52' 24"	7° 47' 44"
+100.91	33.33		3° 17' 24"	11° 05' 08"
0+100.91				
+10		7.81	0° 48' 31"	0° 48' 31"
+25		13.94	1° 26' 38"	2° 15' 09"
+50		23.23	2° 28' 24"	4° 43' 33"
+75		26.23	2° 52' 24"	7° 35' 57"
+100.91		34.08	3° 29' 30"	11° 05' 27"

RANGE ROAD
N. WASSALL - 129' NORTH
30' CONC. & CB
CITY OF WICHITA, KANS.
B.E. SMITH CITY ENGINEER
JUNE, 1955 PROJ. NO. C15-85

DRAWN BY STA. MEZ
 CHECKED BY STA. MEZ
 DATE 6/1/55