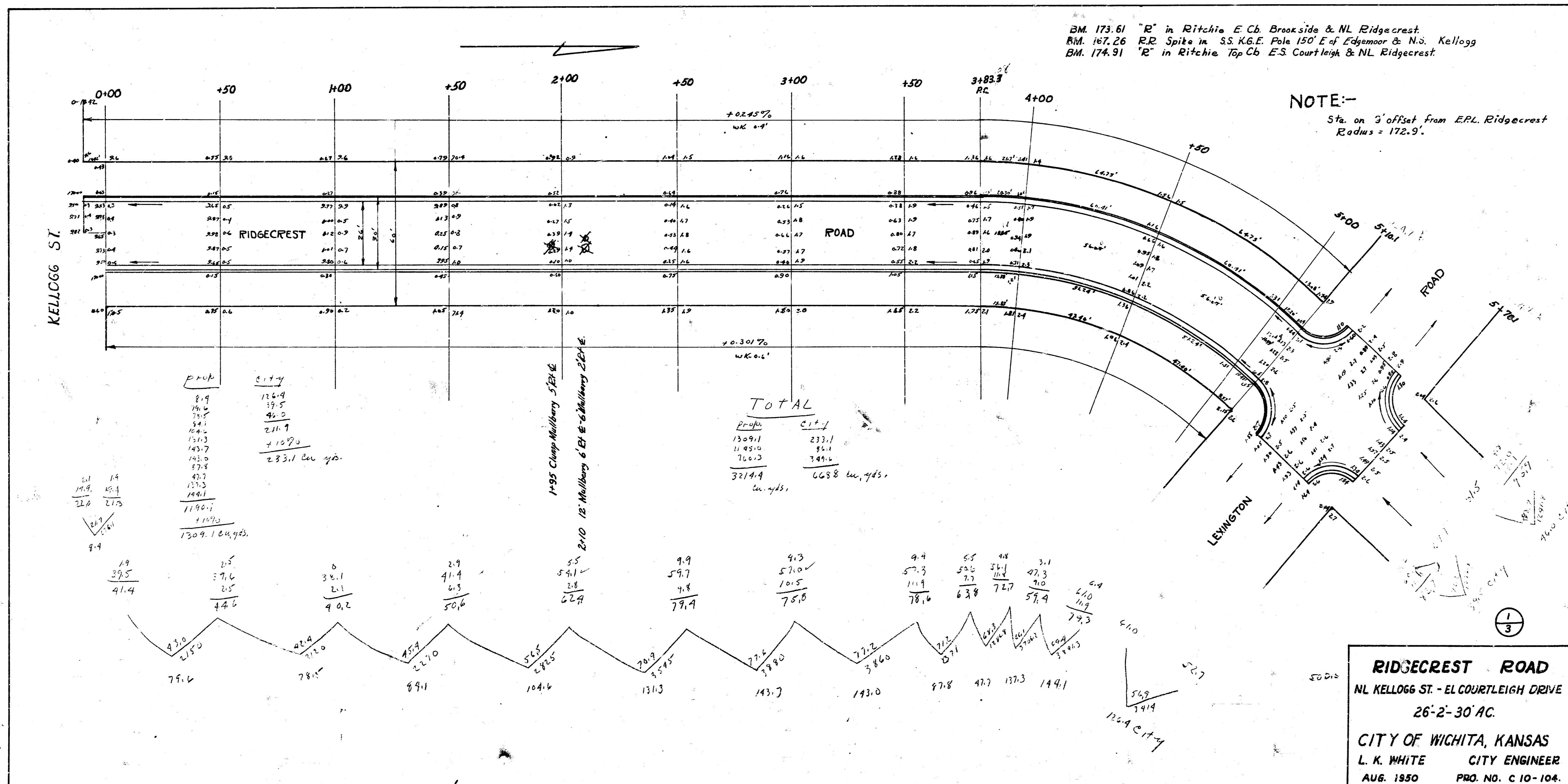


BM. 173.61 "R" in Ritchie E. Ch. Brookside & NL Ridgcrest
 BM. 167.26 R.R. Spike in S.S. K.G.E. Pole 150' E of Edgemoor & N.S. Kellogg
 BM. 174.91 "R" in Ritchie Top C6 E.S. Courtleigh & NL Ridgcrest

NOTE:-
 Sta. on 3' offset from E.P.L. Ridgcrest
 Radius = 172.9'



RIDGECREST ROAD
 NL KELLOGG ST. - EL COURTLIEGH DRIVE
 26'-2" - 30' AC.
 CITY OF WICHITA, KANSAS
 L. K. WHITE CITY ENGINEER
 AUG. 1950 PRO. NO. C 10-104.

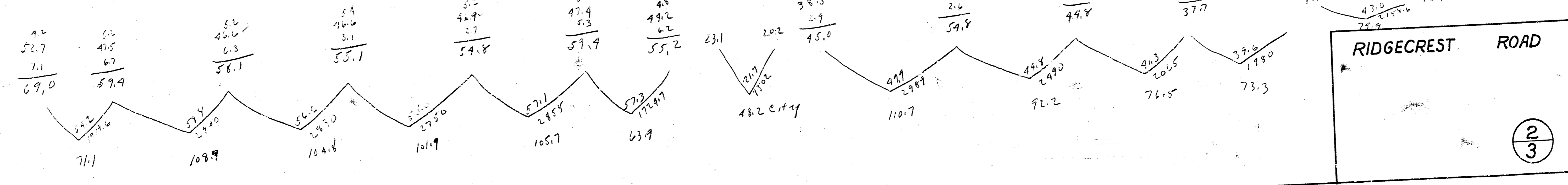
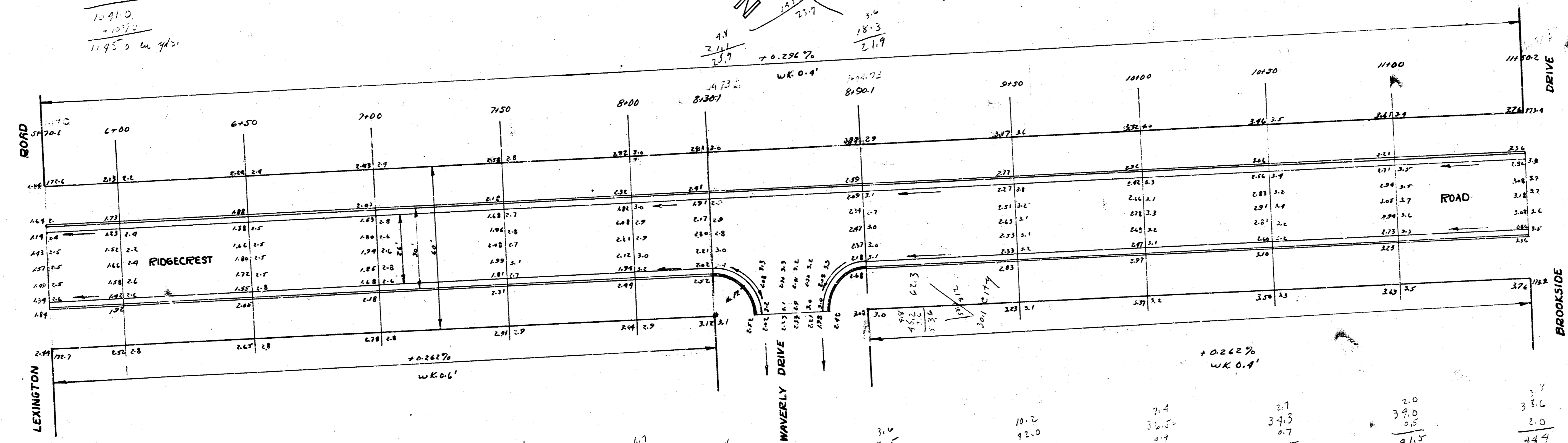
BM 173.61 "R" in Ritchie E. Ch Brookside & NL. Ridgecrest

FROM
 7.1
 2.8
 2.4
 1.5
 1.1
 1.0
 1.2
 1.5
 1.3
 1.9

 12.910
 -10.970
 11.950 cu yds

TO
 4.0
 3.0
 2.3

 9.3
 2.1070
 96.1 cu yds



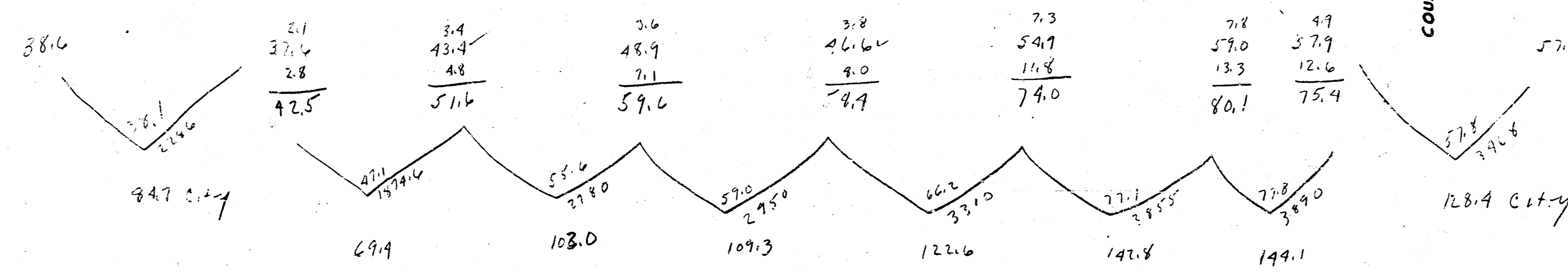
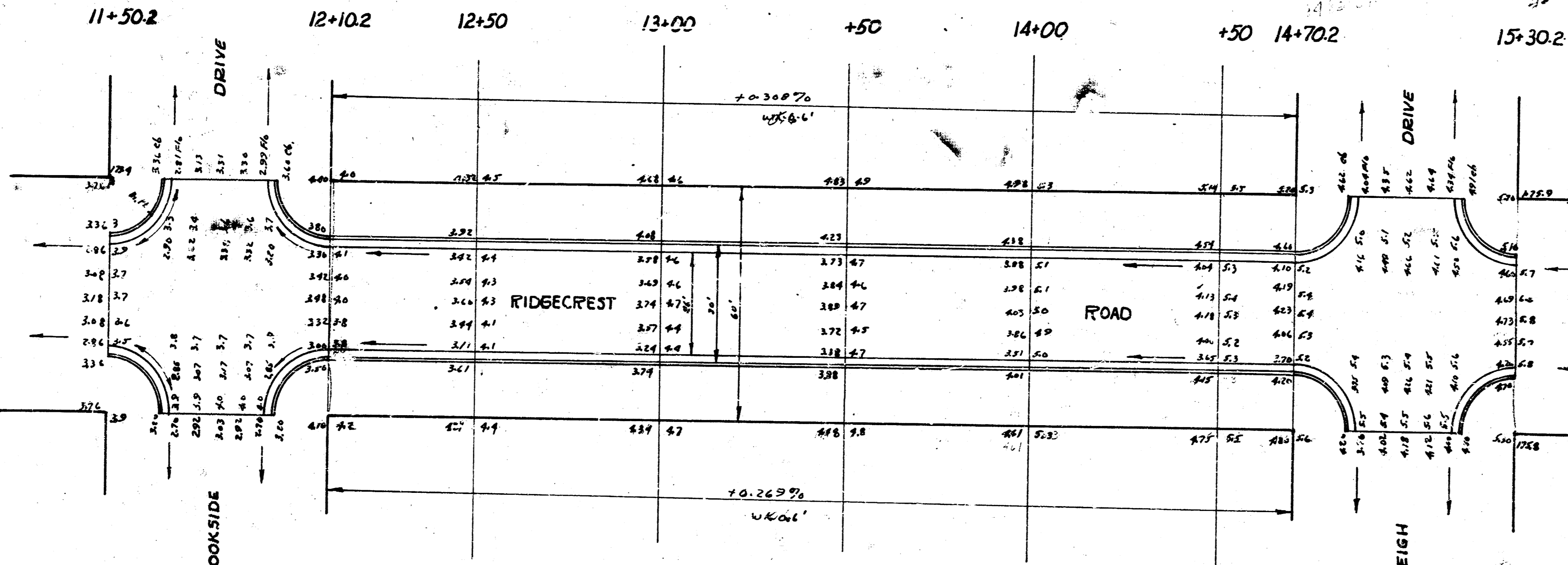
RIDGECREST ROAD

2
3

Prop.	13.1
29.9	20.1
103.0	59.7
109.3	118.4
107.4	91.0
144.1	2.5
691.2	317.8
+117.0	+107.0
720.3	349.2

in yds.

BM. 174.01 "R" in Ritchie Top Cb. ES. Courtleigh & NL Ridgcrest.



RIDGECREST ROAD

4 R 2 (50)

