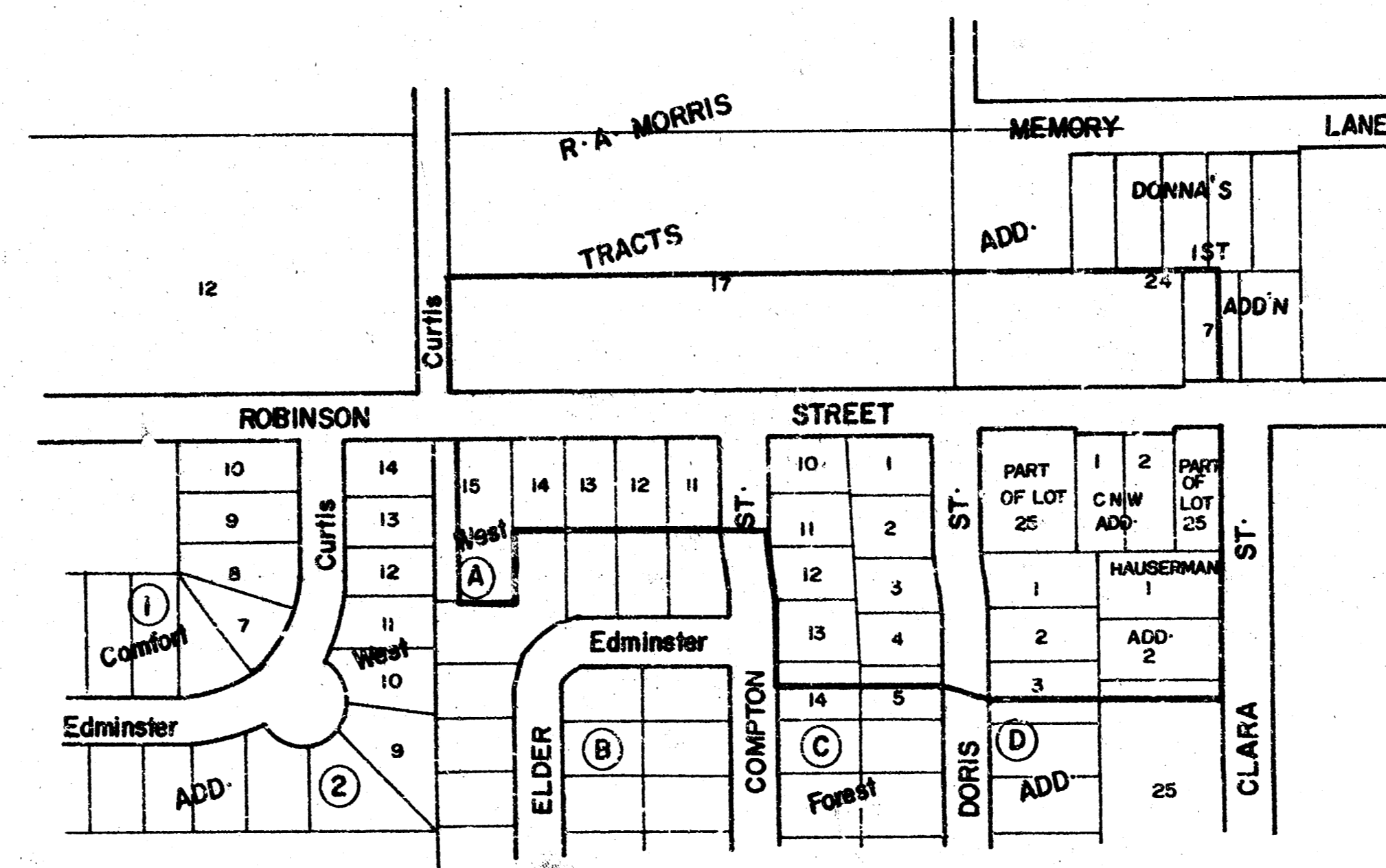


ROBINSON STREET

A POINT 35' E. OF THE NW COR. OF LOT 15, BLK. A
WEST FOREST ADD'N TO W.L. OF CLARA

472-76-245-81182-000-000-001

1" = 200'

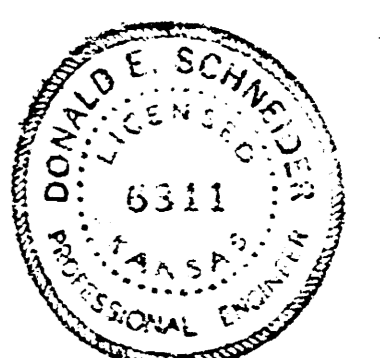


GENERAL NOTES

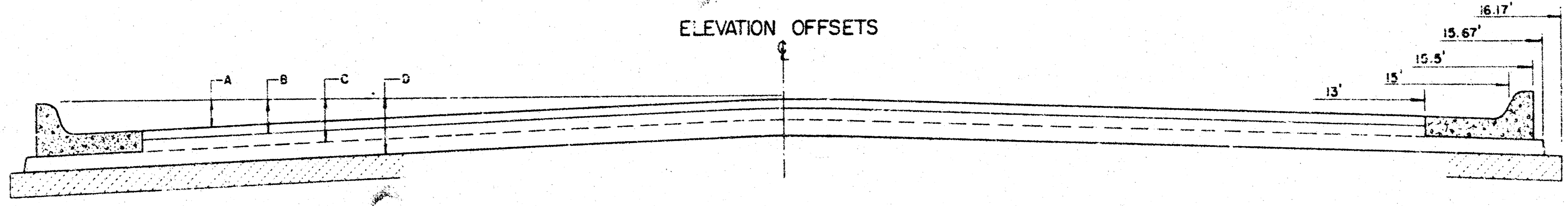
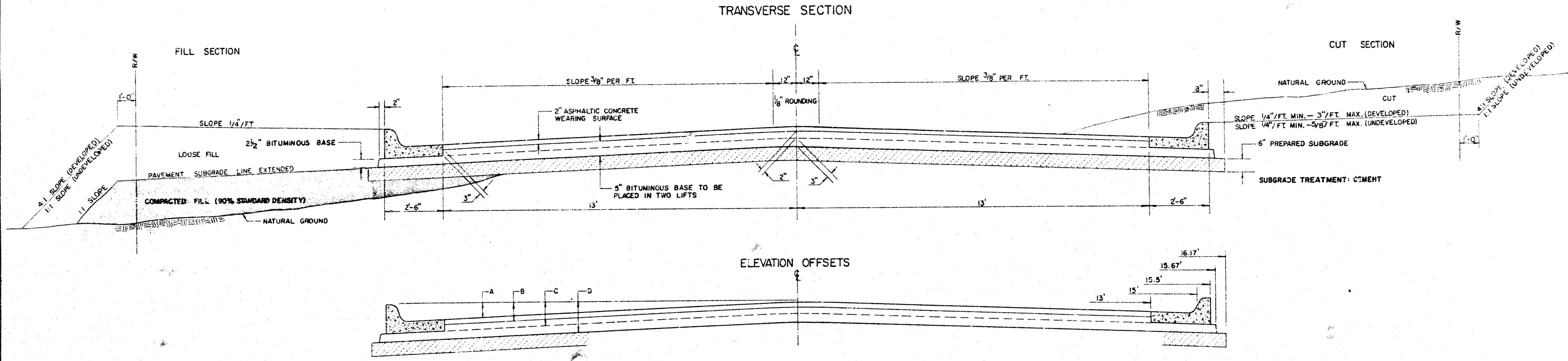
- (1) DRIVEWAY CONSTRUCTION
NO MORE THAN 3,965 SQUARE FEET OF DRIVEWAY SHALL BE CONSTRUCTED AS A PART OF THIS CONTRACT.
THE REMOVAL AND REPLACEMENT OF EXISTING DRIVEWAYS TO FACILITATE GRADE ADJUSTMENT OUTSIDE OF STREET RIGHT-OF-WAY MAY BE COMPLETED AS SHOWN ON THE PLAN; THIS WORK SHALL BE CHARGED TO THE PROJECT.
MISSING PIECES OF DRIVEWAY OUTSIDE OF STREET RIGHT-OF-WAY MAY BE CONSTRUCTED AS A PART OF THIS CONTRACT; THIS WORK SHALL BE CHARGED DIRECTLY TO THE PROPERTY INVOLVED.
ANY WORK OUTSIDE OF STREET RIGHT-OF-WAY SHALL BE AUTHORIZED ON A PROPERLY EXECUTED DRIVEWAY REQUEST FORM.
- (2) SANITARY SEWER CONSTRUCTION
ALL SANITARY SEWER CONSTRUCTION SHALL CONFORM TO CITY OF WICHITA SPECIFICATIONS FOR SANITARY SEWER.
SANITARY SEWER PIPE TO BE CONSTRUCTED AS SHOWN ON THE PLANS, SHALL BE INSTALLED AND ACCEPTED BEFORE PAYMENT MAY BE PLACED.
- (3) MAILBOXES WITHIN THE PROJECT LIMITS SHALL BE REMOVED AND REPLACED BY THE CONTRACTOR AS APPROVED BY THE ENGINEER. CONTRACTOR WILL BE REQUIRED TO MAKE SATISFACTORY PROVISIONS FOR MAIL DELIVERY TO PROPERTIES AFFECTED BY THIS PROJECT DURING CONSTRUCTION.
- (4) ALL ENTRANCE AND CROSS ROAD DRAINAGE PIPES WITHIN THE PROJECT LIMITS SHALL BE REMOVED BY THE CONTRACTOR, UNLESS OTHERWISE NOTED ON THE PLANS. REMOVAL OF SUCH PIPES SHALL CONFORM TO THE APPLICABLE SECTIONS OF THE STANDARD SPECIFICATIONS.
- (5) CONTRACTOR SHALL GIVE PROPERTY OWNERS ABUTTING THIS PROJECT WHOSE YARDS WILL BE LOWER THAN THE TOP OF THE NEW CURB AN OPPORTUNITY TO UTILIZE EXCESS EXCAVATED MATERIAL FROM THE PROJECT TO REGRADE THEIR YARDS TO DRAIN TO THE NEW PAVEMENT. CONTRACTOR WILL BE REQUIRED TO DUMP AND SPREAD THE EXCESS MATERIAL AS REQUIRED BY THE STANDARD SPECIFICATIONS.

City Of Wichita, KS

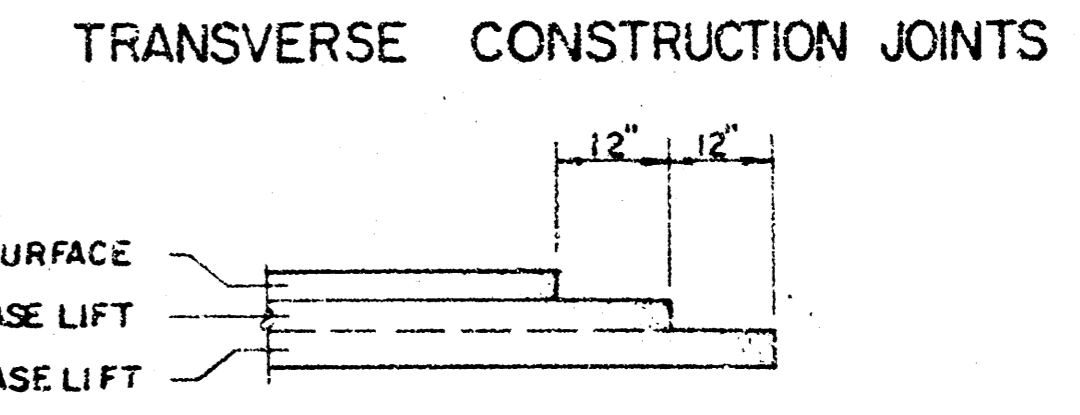
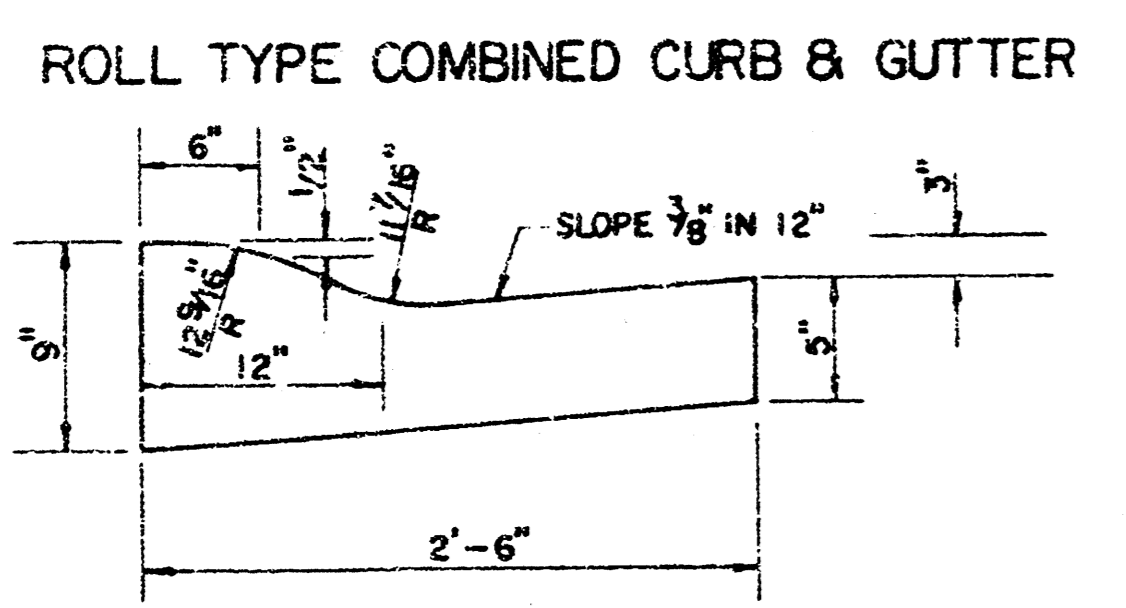
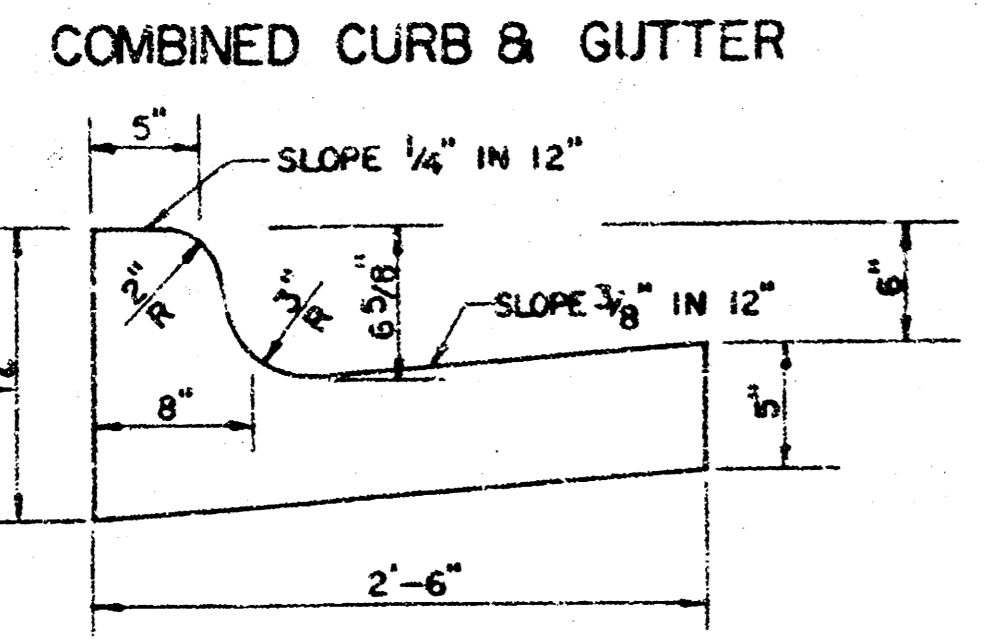
M.E. Lindebak / City Engineer



TYPICAL 3' PAVEMENT DETAILS



	DISTANCE FROM CENTERLINE (LT. & RT.)											
	0'	2'	4'	6'	7.5'	10'	12'	13'	15'	15.5'	15.67'	16.17'
A: TOP OF CURBS TO TOP OF SURFACE LIFT	0.10	0.14	0.21	0.27	0.32	0.39	0.46	0.49	—	—	—	—
B: TOP OF CURBS TO TOP OF UPPER BASE LIFT	0.27	0.31	0.38	0.44	0.49	0.56	0.63	0.66	—	—	—	—
C: TOP OF CURBS TO TOP OF LOWER BASE LIFT	0.44	0.49	0.57	0.64	0.70	0.79	0.87	0.90	0.98	1.00	1.00	—
D: TOP OF CURBS TO TOP OF SUBGRADE	0.69	0.73	0.80	0.87	0.93	1.01	1.08	1.12	1.19	1.21	1.21	1.23



GENERAL NOTES

- 1) THE ASPHALTIC CONCRETE PAVEMENT BETWEEN THE COMBINED CURB AND GUTTER SHALL BE PAID AS SQUARE YARDS OF 7\"/>

TRANSVERSE CONSTRUCTION JOINTS SHALL BE CONSTRUCTED IN FLEXIBLE BASE PAVEMENTS AT LOCATIONS WHERE PAVEMENT JOINTS EXISTING FLEXIBLE BASE PAVEMENT AS SHOWN BY THE DETAIL. THE COST OF TRANSVERSE CONSTRUCTION JOINTS SHALL BE INCLUDED IN THE BID PRICE FOR SQUARE YARDS OF ASPHALTIC CONCRETE (5\"/>

7 INCH RESIDENTIAL ASPHALTIC CONCRETE PAVEMENT WITH 5 INCH BITUMINOUS BASE
 CITY OF WICHITA, KANSAS
 PROJECT NUMBER
 472-76-245-81182-000-000-001

3/7

ROBINSON STREET
472-76-245-81182-000-000-001

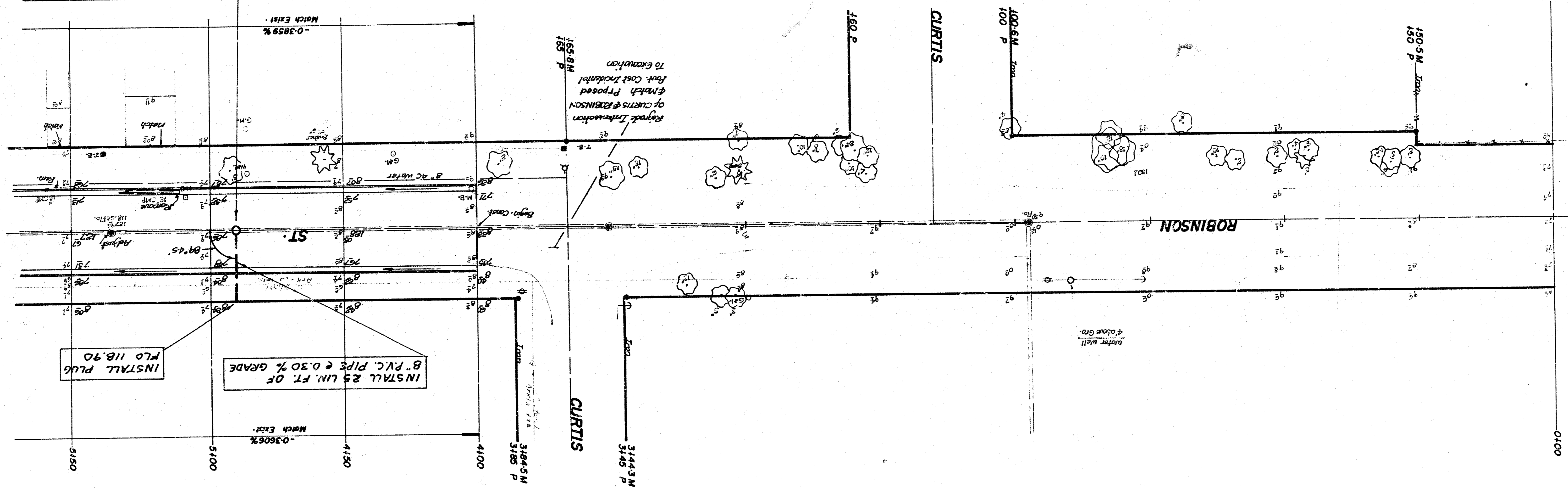
THE CONTRACTOR SHALL BE RESPONSIBLE FOR OBTAINING ALL NECESSARY PERMITS FROM THE CITY OF HOVER AND THE STATE OF MASSACHUSETTS. THE CONTRACTOR SHALL BE RESPONSIBLE FOR OBTAINING ALL NECESSARY PERMITS FROM THE CITY OF HOVER AND THE STATE OF MASSACHUSETTS. THE CONTRACTOR SHALL BE RESPONSIBLE FOR OBTAINING ALL NECESSARY PERMITS FROM THE CITY OF HOVER AND THE STATE OF MASSACHUSETTS.

Excavation	1317.20 c.y.	2.90 c.y.	Comp. Fill
Total	1448.92 c.y.	3.19 c.y.	
Manipulation 3580.20 c.y.			

COPTS ASSOCIATED WITH THE SANITARY SEWER SHALL BE ASSESSED DIRECTLY TO THE SOUTH ONE HUNDRED FORTY FEET OF LOT 17, R.A. MORRIS TRACTS.

STA 4+90 CONST. STD. MH. TYPE "B" OVER EXIST. 8" CLAY SANITARY SEWER. TOP MH. TO CONFORM TO THE TOP OF THE FINISHED PAVEMENT. FLO 118.72 W-5 N. FLO 118.82 B" N.

CAUTION
UNDERGROUND
UTILITIES



- B-M-126-293 Hoover 9TH ST - N - CITY STD. Disc-34' E - 42' S - E Both
- B-M-126-44 R-R Spk S-Face P-P, N-E Cor. Hoover & Robinson
- B-M-129-85 N-E Cor. Porch Of House #5321 Robinson
- B-M-128-84 SW Cor. Porch Of House #5100 Robinson
- B-M-124-64 Anna & 3TH ST - CITY STD. Disc-33' W-42' S - E Both

Right of Way
17th St
118.72 W-5 N
118.82 B" N



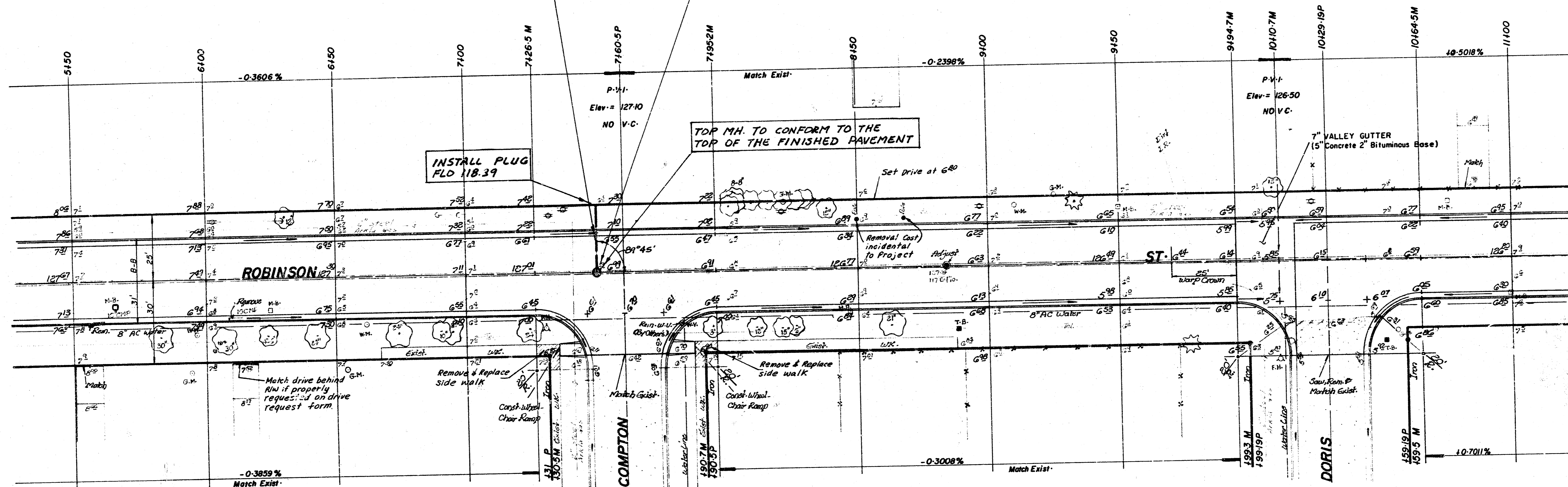
COSTS ASSOCIATED WITH THE SANITARY SEWER SHALL BE ASSESSED DIRECTLY TO THE WEST THREE HUNDRED SEVENTY (370) FEET OF THE SOUTH ONE HUNDRED FORTY FEET OF LOT 17, R.A. MORRIS TRACTS.

INSTALL 25. LIN. FT. OF 8" P.V.C. PIPE @ 0.30% GRADE

STA 7+50 CONST STD. MH. TYPE "B" OVER EXIST. 8" CLAY SANITARY SEWER FLO 118.21 W-E., FLO 118.31 8" N.

INSTALL PLUG FLO 118.39

TOP MH TO CONFORM TO THE TOP OF THE FINISHED PAVEMENT



INTERSECTION QUANTITIES

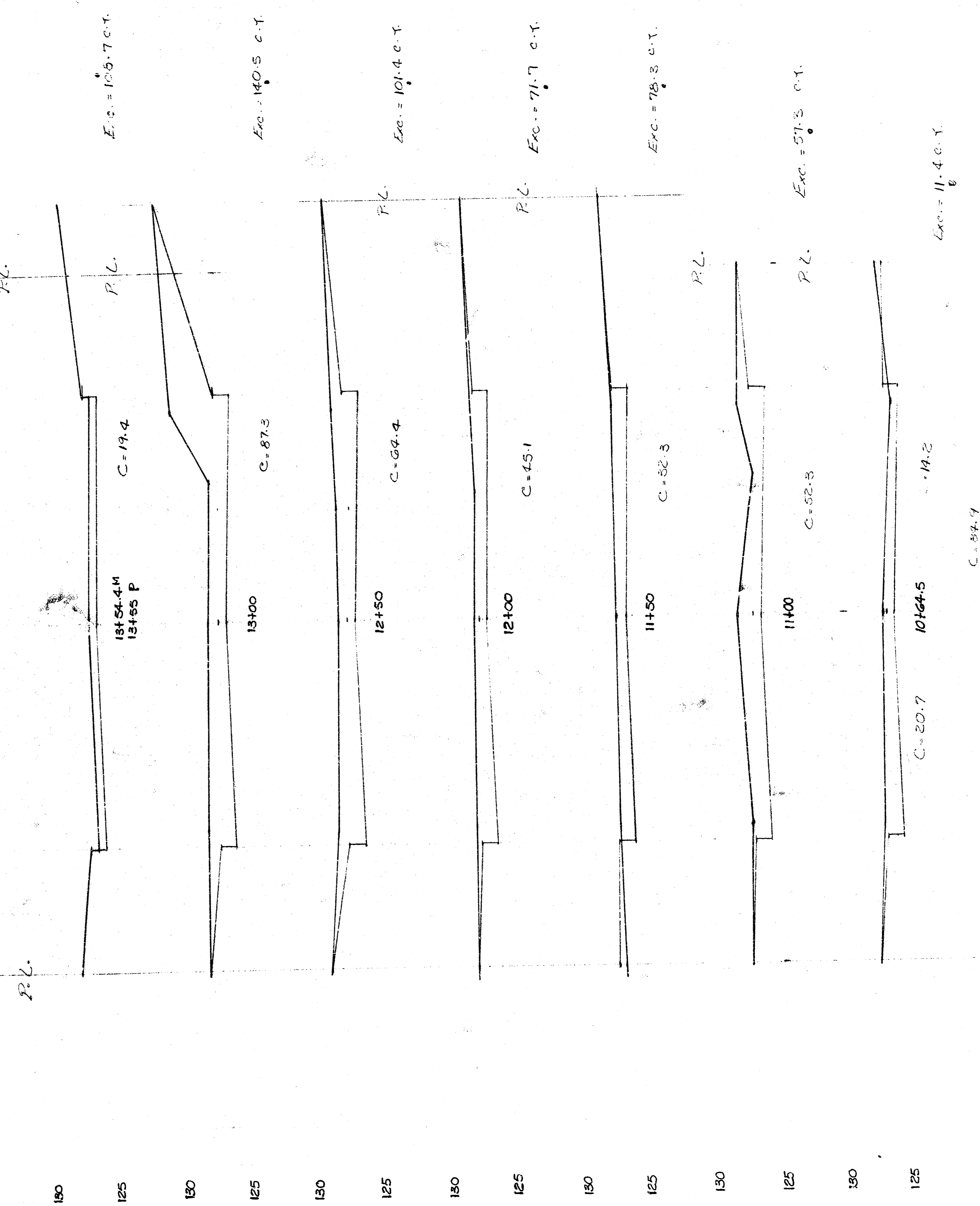
---	S.Y.	---	Concrete Pavement
168.0	S.Y.	2"	Asphaltic Conc. Pavement (5" Bituminous Base)
16.3	S.Y.	2 1/2"	Bituminous Base
53.0	L.F.		Combined Curb & Gutter
---	L.F.		Integral Curb
100.0	S.F.	4"	Wheelchair Ramp
---	S.F.	4"	Walk
---	C.Y.		Excavation
---	C.Y.		Compacted Fill
32.0	L.F.		Sawed Joint
157.6	S.Y.		Manipulation
---			Tons Lime or Cement
---	S.Y.	V.G.	Concrete & Asphaltic Concrete Base

INTERSECTION QUANTITIES

51.3	S.Y.		Pavement Removed
144.4	S.Y.	2"	Asphaltic Conc. Pavement (5" Bituminous Base)
9.6	S.Y.	2 1/2"	Bituminous Base
31.4	L.F.		Combined Curb & Gutter
31.4	L.F.		Integral Curb
---	S.F.	4"	Wheelchair Ramp
---	S.F.	4"	Walk
---	C.Y.		Excavation
---	C.Y.		Compacted Fill
31.0	L.F.		Sawed Joint
209.6	S.Y.		Manipulation
---			Tons Lime or Cement
52.4	S.Y.	V.G.	Concrete & Asphaltic Concrete Base

ROBINSON STREET
472-76-245-61182-000-000-001

FILMED FROM THE BEST AVAILABLE COPY



150
125
150
125
150
125
150
125
150
125
150
125
150
125
150
125
150
125
150
125
150
125

ROBINSON ST.
472-76-245-81182-000-000-001

44 3 3 3
7/7

FILMED FROM THE BEST
AVAILABLE CCOPY