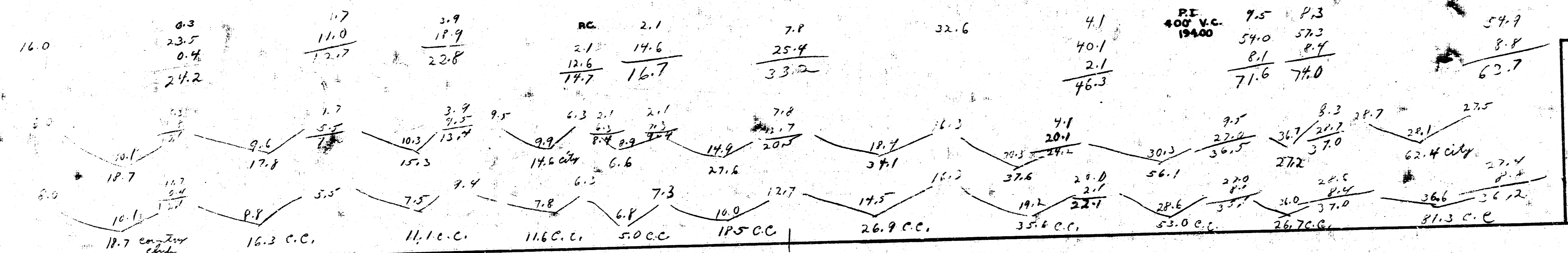
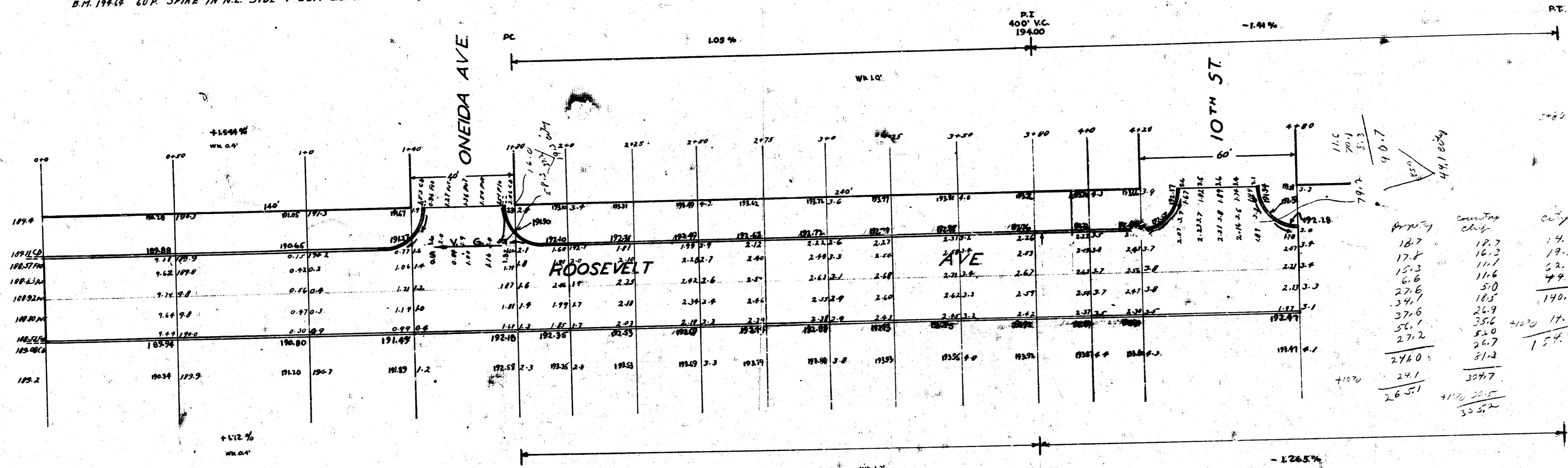
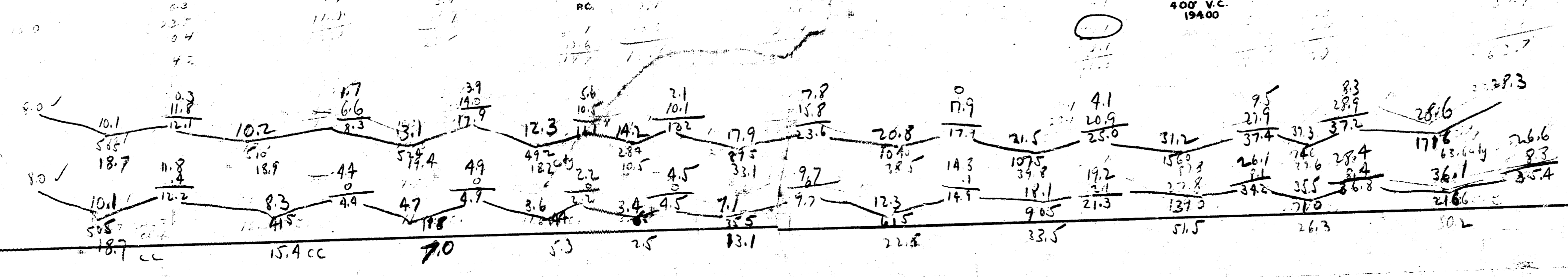
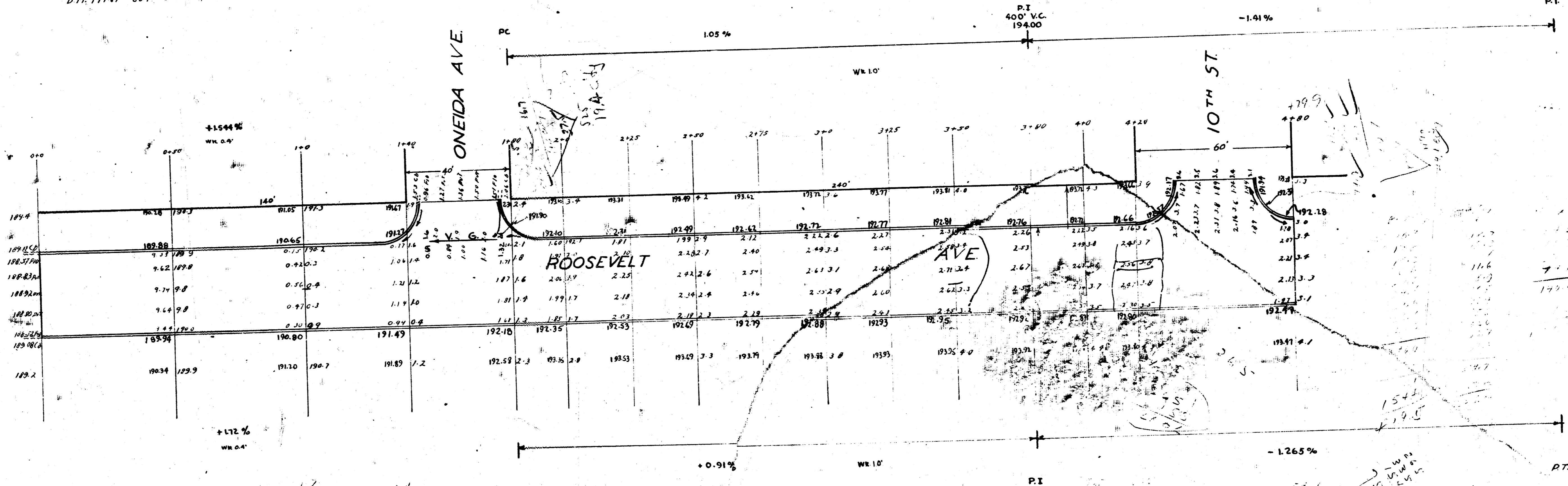


B.M. 19320 STEP BENCH IN P.P. ON E.S. ROOSEVELT + N.L. ONEIDA  
 B.M. 19311 'G' IN GLOBE END OF CB N.S. ROOSEVELT 140' SW OF S.E. ONEIDA  
 B.M. 19448 COP SPIRE IN N.E. SIDE 7' ELM E.S. ROOSEVELT, 13' N. OF S.L. 10TH



**ROOSEVELT AVE**  
 WEST HALF  
 240' N. OF 9TH TO N.L. 10TH  
**15" CONCRETE & CB.**  
 CITY OF WICHITA, KANSAS  
 LK WHITE CITY ENGINEER  
 JULY 1946

B.M. 19120 STEP BENCH IN P.P. ON E.S. ROOSEVELT AVE. N.L. ONEIDA  
 B.M. 18911 'G' IN GLOBE END OF CH. W.S. ROOSEVELT, 140' S.E. OF S.L. ONEIDA  
 B.M. 19449 60' SPIKE IN N.E. SIDE 7' ELM. E.S. ROOSEVELT, 13' N. OF S.L. 10<sup>TH</sup>



**ROOSEVELT AVE.**  
 WEST HALF  
 240' N. OF 9<sup>TH</sup> TO N.L. 10<sup>TH</sup>  
**15' CONCRETE & CB**  
 CITY OF WICHITA, KANSAS  
 L.K. WHITE CITY ENGINEER  
 JULY 1946