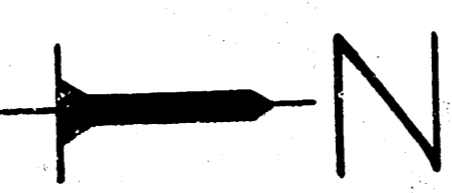
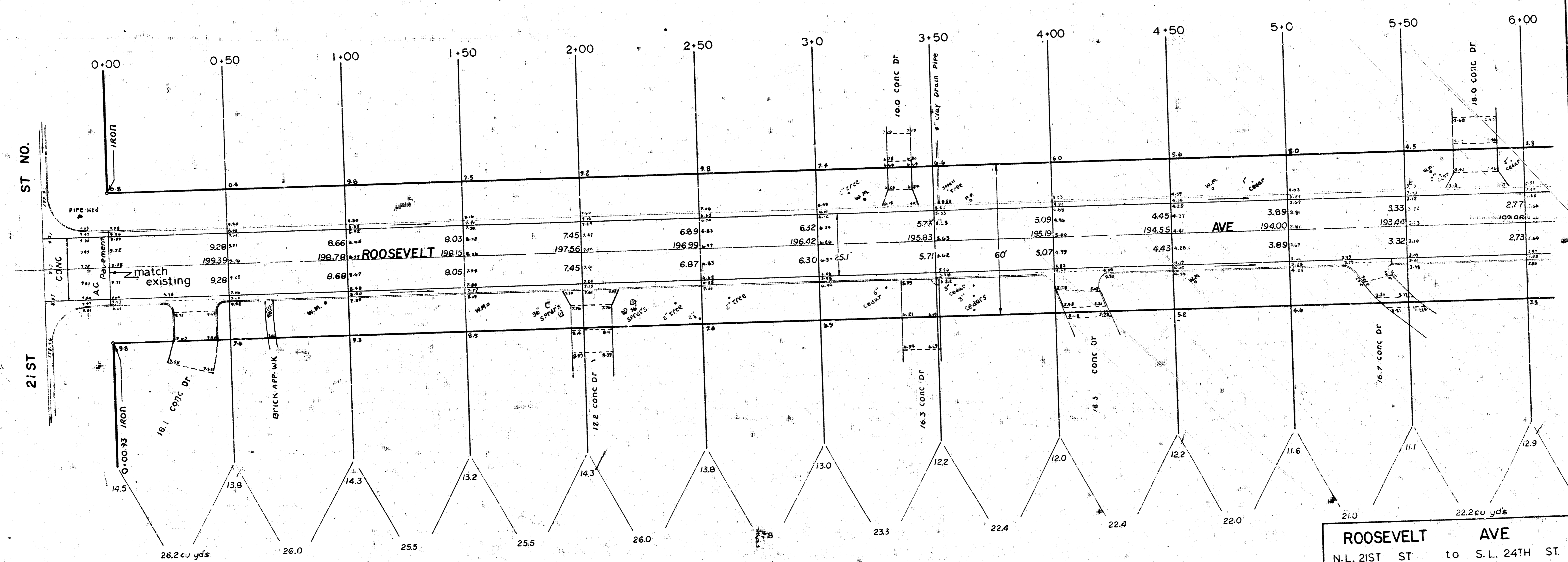


BM = 200.48 S.W. Cor bottom step. S. Side. Ho # 2200 Roosevelt.
 BM = 193.52 "M" in Mueller. Top Fire Hyd on W. Side Roosevelt & Ctr. of 22nd ST.
 BM = 189.95 N.E. Cor conc step. Ho # 2351 Roosevelt.
 BM = 187.10 "M" in Mueller. Top Fire Hyd on N.W. Cor 24th ST & Roosevelt

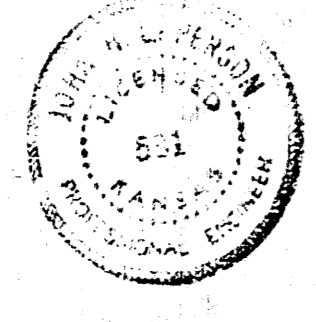
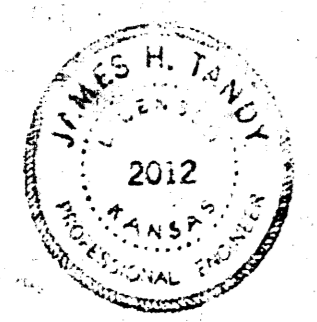
Scale 1" = 20'

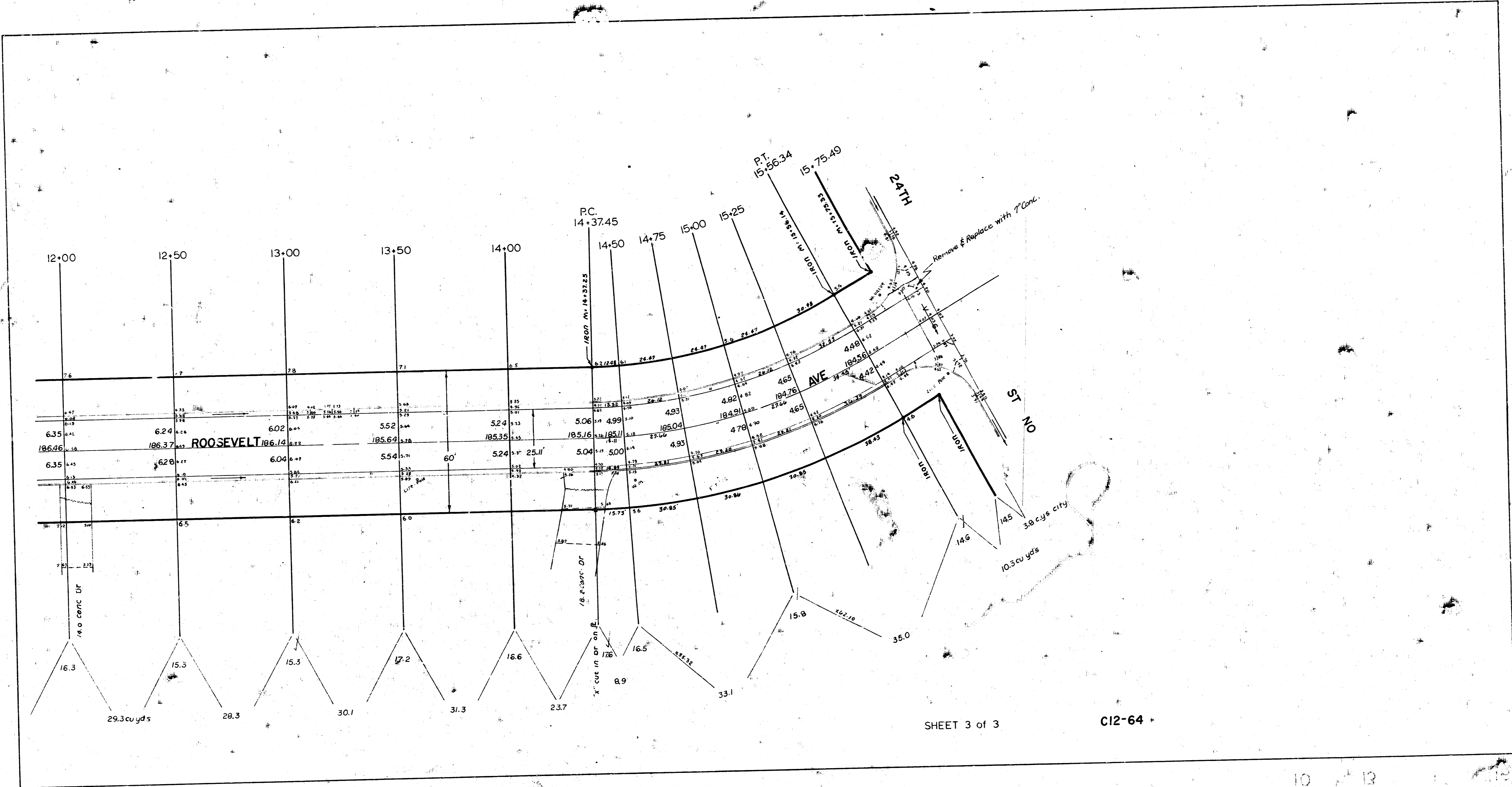
EXCAVATION	
CITY	PROP
20.2	820.5
10% 2.0	10% 82.0
22.2 cyds	902.5 cyds

SHEET 1 of 3

ROOSEVELT AVE
 N.L. 21ST ST to S.L. 24TH ST.
25' ASPH CONC
 CITY OF WICHITA, KANSAS
 B.E. SMITH CITY ENGINEER
 DATE: MAY 1963 PROJ C12-64



Giantz 37688
 Lines
 1/2" Cont. 1/2"



SHEET 3 of 3

C12-64

10 12