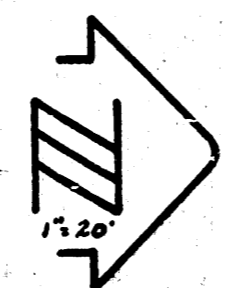


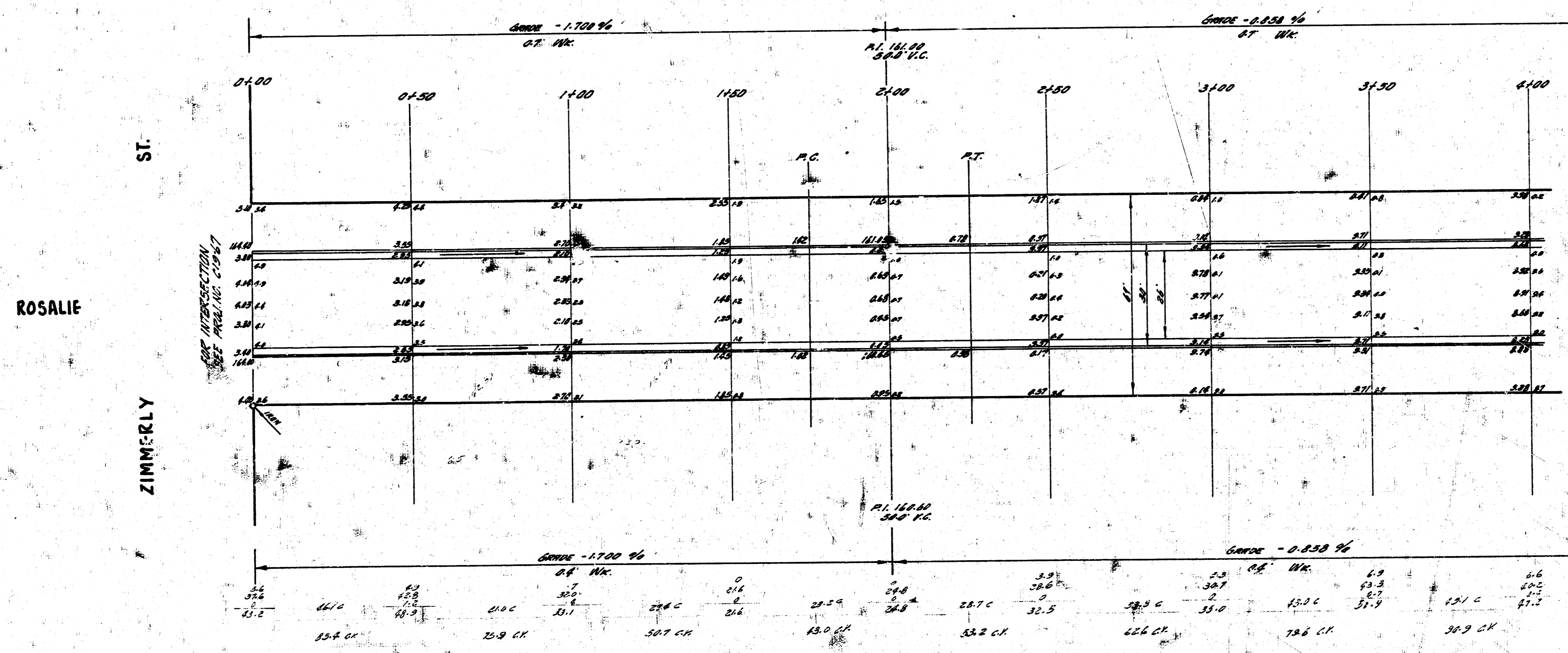
Survey
 Checked by
 Exc. and
 Checked by

B.M. 158.00 "E" IN FITCHIE W. LINE BLACKWILL
 N. CH. ZIMMERLY

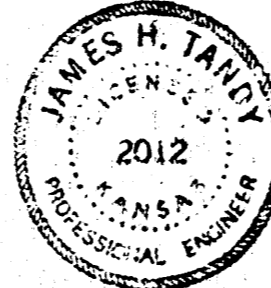


ESTIMATE OF QUANTITIES BY DISPOSITION LISTED IN ESTIMATE			
QUANTITY	UNIT	ITEM	EST. AMOUNT
5,372.6	Sq. Ft.	Asph. Conc. Pavement	26,213
1,898.9	Lin. Ft.	Comb. Ch. & G.P.	1,308.9
1,220.1	Cu. Yd.	Excavation	1,218.1
5,785	Lbs.	Rein. Steel	5,025

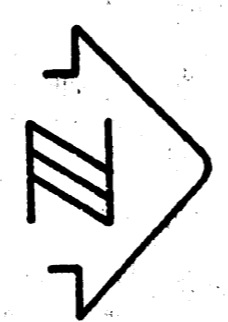
NOTE TO CONTRACTOR
 This project will be constructed under the supervision of the CITY ENGINEER and conforming to the SPECIFICATIONS of the CITY OF WICHITA. The CONTRACTOR will reimburse the City of Wichita for all cost of Engineering, Plans, and Inspection.



Excavation
 1,220.1 CF

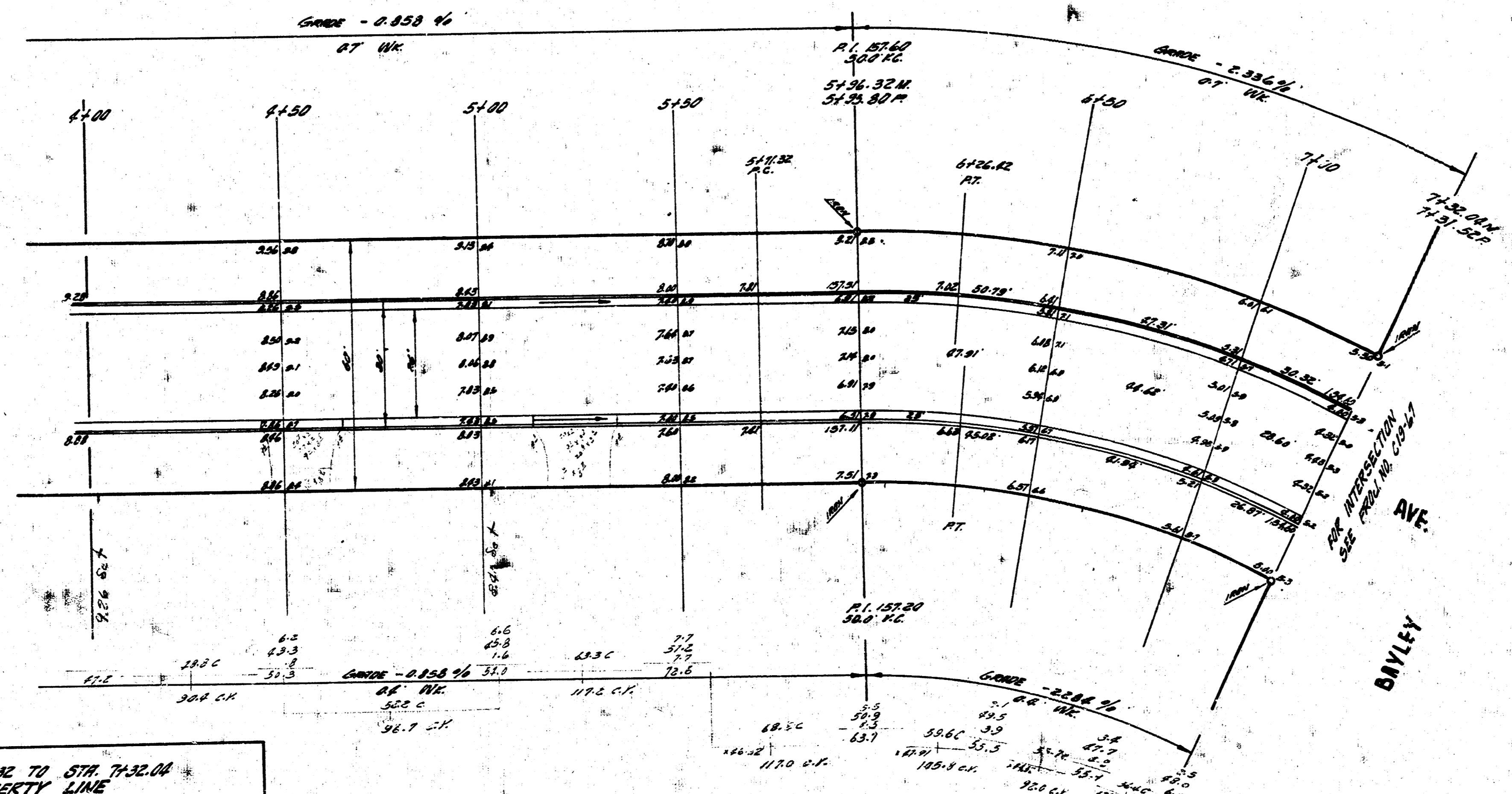


ROSALIE AVE.
 N.L. ZIMMERLY - SL. BAYLEY
 26-2-30 A.S.
CITY OF WICHITA, KANSAS
 B.E. SMITH
 DATE: CITY ENGINEER
 PRIVATE CONTRACT



ROSALIE

BAYLEY AVE.



CURVE DATA STA 5+00.00 TO STA 7+32.04
BASED ON WEST PROPERTY LINE

$\Delta = 47^{\circ} 58'$ $\frac{1}{2}\Delta = 23^{\circ} 59'$
 $R = 278.78'$ $R_c = 135.78'$
 MIN DIFF / FT = 6.167

STATION	DEFL. Δ	TANGENT DIST. Δ	CHORD OFF W. C.B.	CHORD OFF E. C.B.	ARC ON WEST PL.
STA 5+00.00					
6+30.00	5° 31' 05"	5° 31' 05"	38.25	43.41	53.68
7+00.00	5° 38' 21"	10° 35' 26"	48.68	44.04	38.20
PT 7+32.04	5° 17' 36"	18° 57' 01"	31.22	25.33	32.04

ROSALIE AVE.
ZIMMERLY ~ BAYLEY
PRIVATE CONTRACT

2/2

10 e 2 11 12