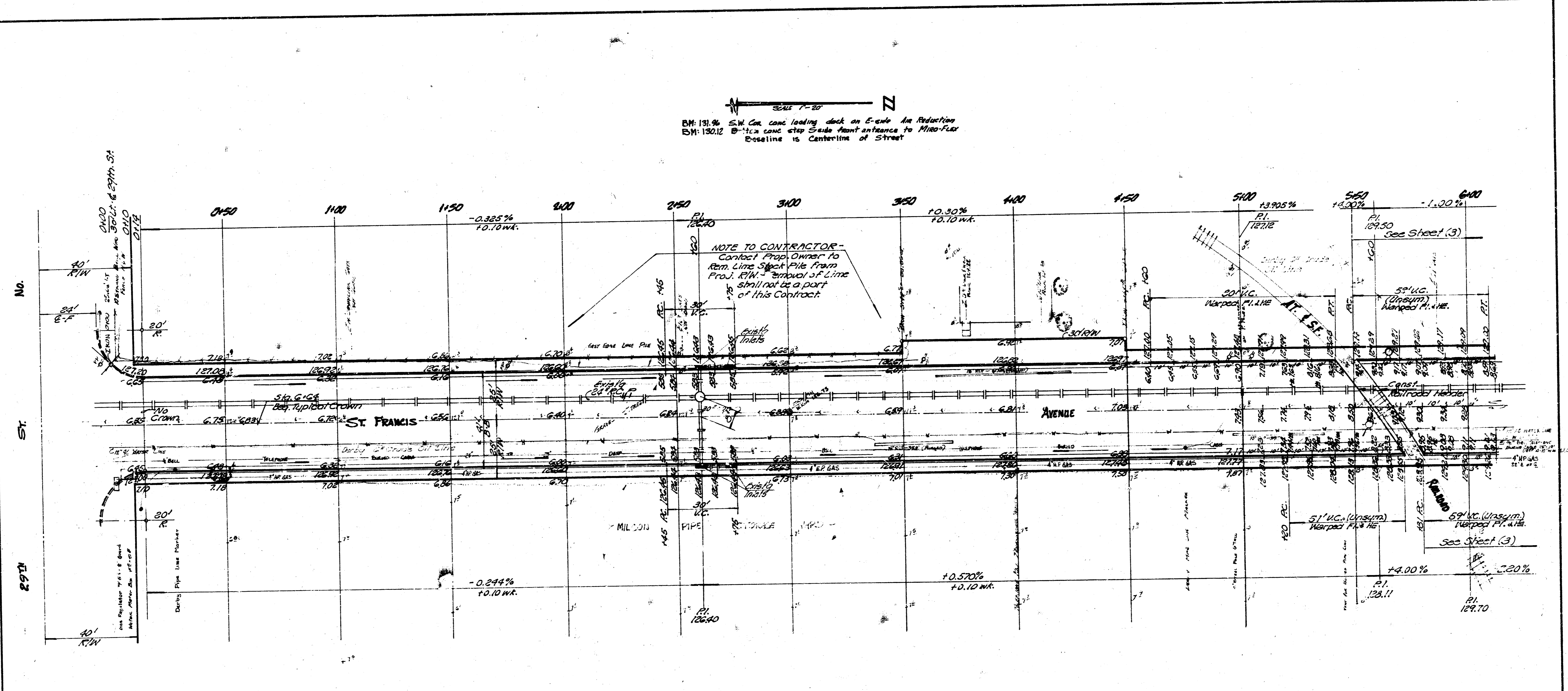




Surveyed from  
 City of St. Louis  
 City Engineer  
 R. W. Linn  
 Date: 5/1/74

SCALE 1" = 20'  
 N  
 BM 131.96 S.W. Cor. conc. loading dock on E. side Ave. Reduction  
 BM 130.12 B-11 conc. step grade front entrance to Mill-Co  
 Baseline is Centerline of Street



EARTHWORK QUANTITIES  
 Excav. Comp. Fill  
 1889.5 CY 2.3 CY  
 127.0 M<sup>3</sup> 0.2 M<sup>3</sup>  
 1416.5 CY 2.5 CY  
 Use Cement Treated Subgrade

ST. FRANCIS AVENUE  
 AL 29<sup>th</sup> ST. No - SL 30<sup>th</sup> ST. No.  
 35-2-40 ASPHALTIC CONCRETE  
 R. W. LINN CITY ENGINEER  
 MAY 1974  
 PROJECT NUMBER DAKS 66701E

