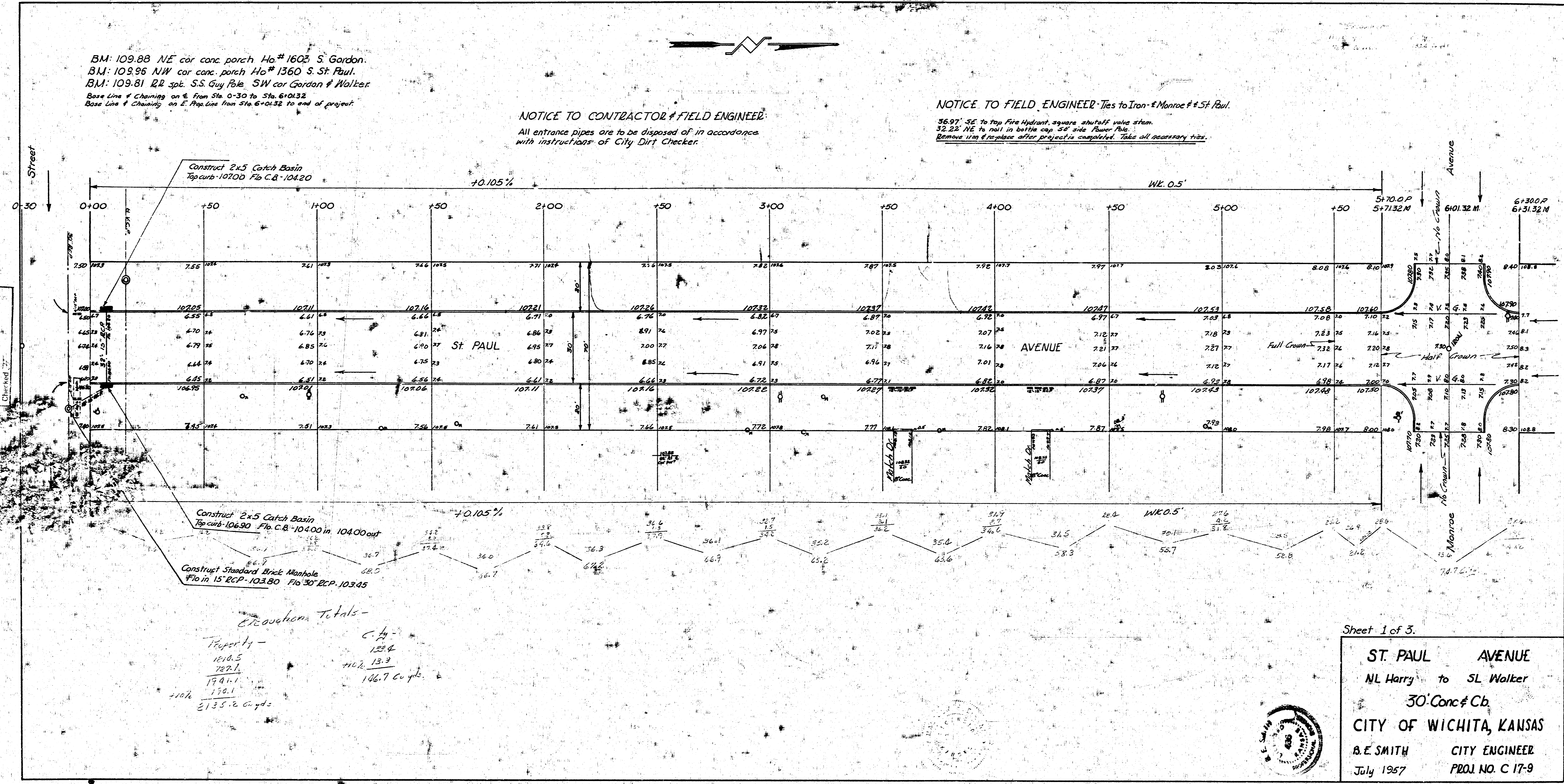


BM: 109.88 NE cor conc porch Ho# 1603 S Gordon.
 BM: 109.95 NW cor conc porch Ho# 1360 S St Paul.
 BM: 109.81 RR spl. S.S. Guy Pole SW cor Gordon & Walker.
 Base Line & Chaining on E. From Sta. 0+30 to Sta. 6+01.32
 Base Line & Chaining on E. From Sta. 6+01.32 to end of project.

NOTICE TO CONTRACTOR & FIELD ENGINEER:
 All entrance pipes are to be disposed of in accordance
 with instructions of City Dirt Checker.

NOTICE TO FIELD ENGINEER: Ties to Iron & Monroe # 5 St Paul.
 56.97' SE to Top Fire Hydrant square shaft if value shown.
 32.22' NE to nail in bottle cap 5" side Flower Pole.
 Remove iron & replace after project is completed. Take all necessary ties.



Excavation Totals -

Property -	City -
110.5	123.4
722.1	712.3
1991.1	146.7 cu yd.
130.1	
3155.6 cu yd.	

Sheet 1 of 3.

ST. PAUL AVENUE
 NL Harry to SL Walker
 30' Conc & Cb
CITY OF WICHITA, KANSAS
 B. E. SMITH CITY ENGINEER
 July 1957 PROJ. NO. C 17-9

