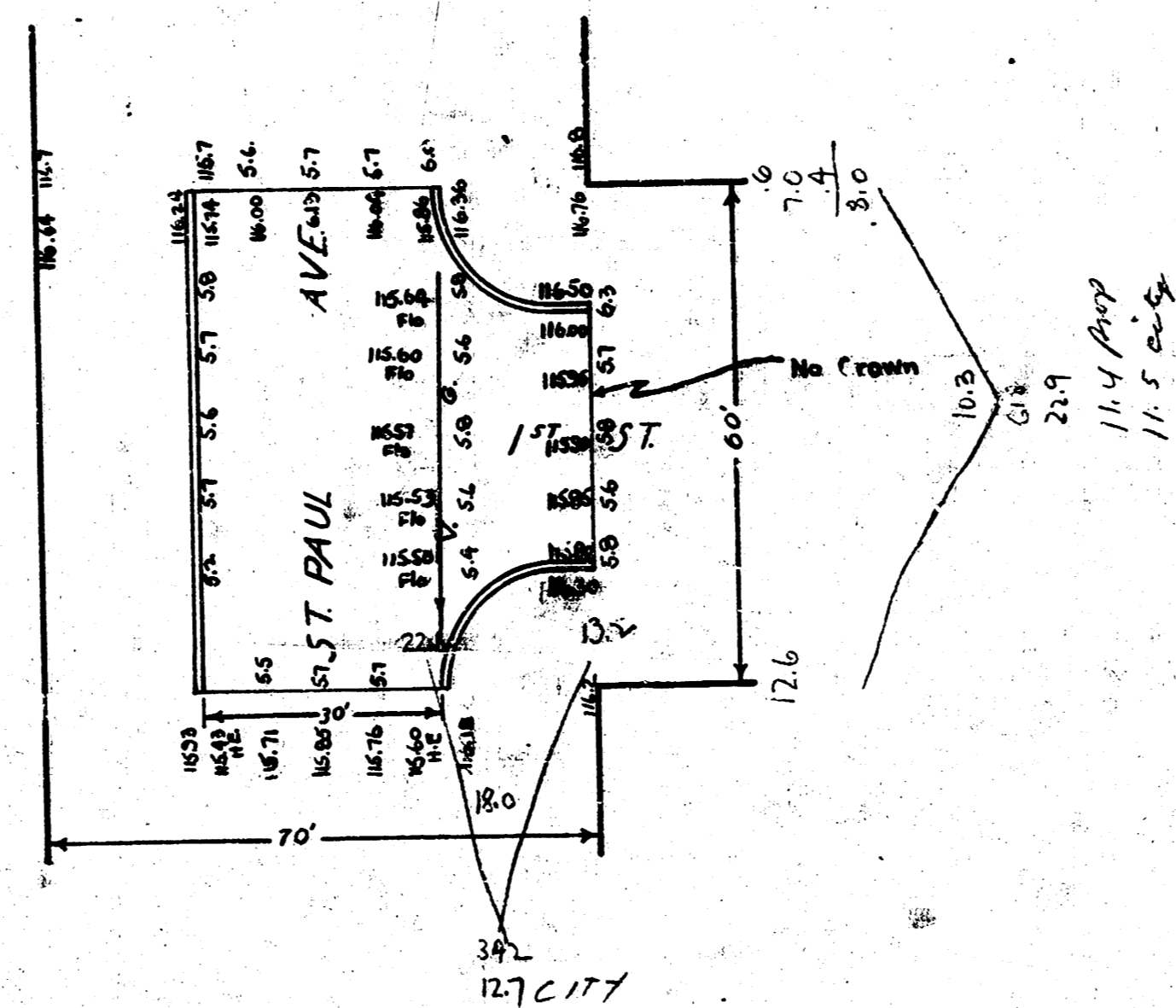


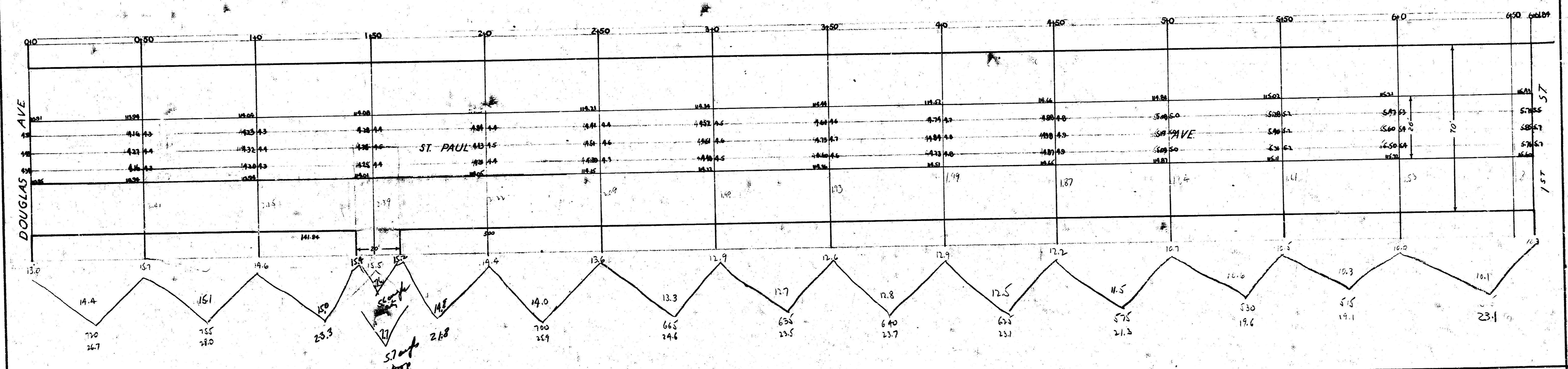
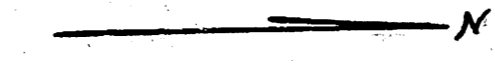
BM 11612 6" in Globe - New E. Ch. SE 35' Paul & L



	Prop	City
	11.4	12.7
	11.4	11.5
	1.1	2 3/4
+10%	12.5	2.4
		2.66

ST. PAUL AVE
 SL 1ST ST TO NL 1ST ST
 30' CONCRETE & CB
 CITY OF WICHITA, KANSAS
 L.K. WHITE CITY ENGINEER
 JUNE 1946

BM 1154 0' in Globe E. Ent. Co. Bldg. NE Corner 4 1/2"
 BM 1157 0' in Globe NE. Ent. Co. Bldg. SE Corner 6 1/2"



$$\begin{array}{r} \text{City} \\ +10\% \\ \hline 5.6 \\ 6.2 \\ \hline 11.8 \end{array}$$

$$\begin{array}{r} \text{Prop.} \\ +10\% \\ \hline 309.4 \\ 30.9 \\ \hline 340.3 \end{array}$$

ST PAUL AVE
 N. L. DOUGLAS TO S. L. 1ST ST
 26' CONCRETE
 CITY OF WICHITA, KANSAS
 L. K. WHITE CITY ENGINEER
 JUNE 1946

ST PAUL AVE. Cb. & Gtr. N.L. Douglas S.L. 1ST

