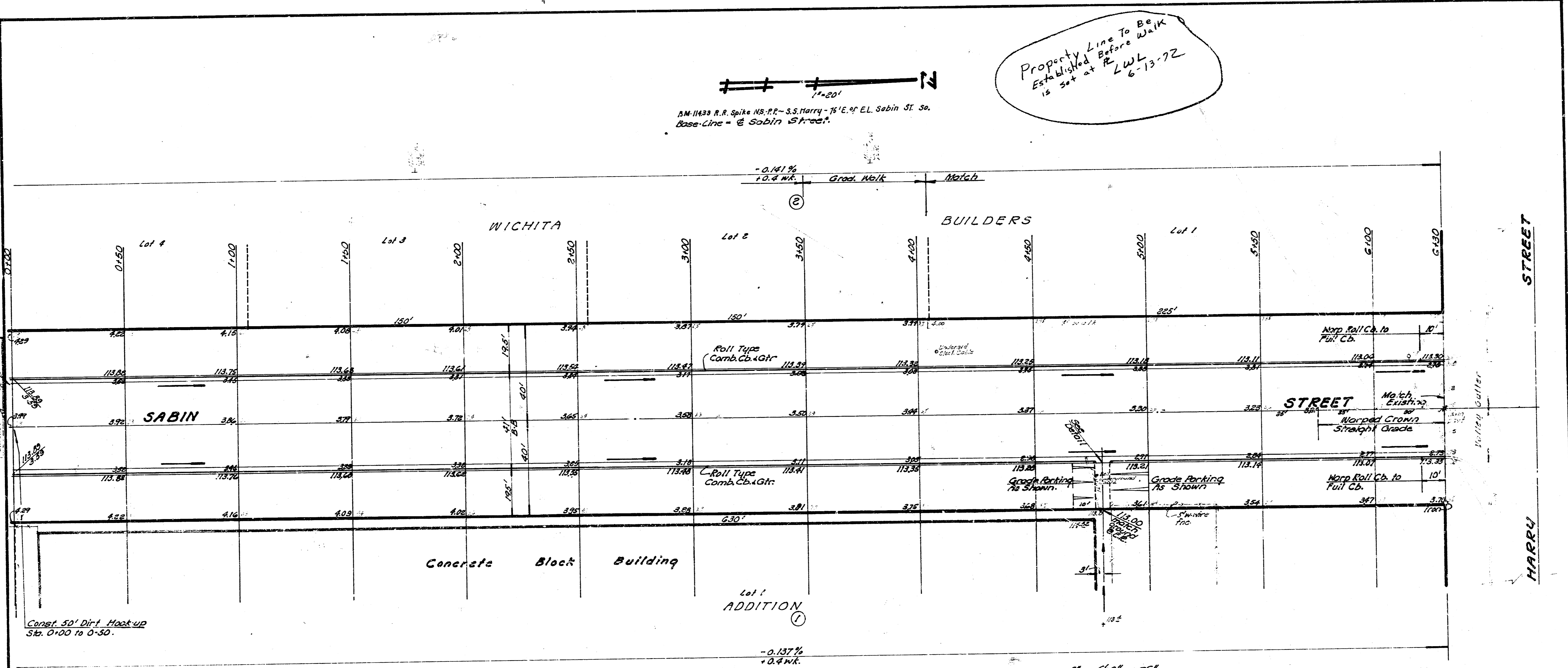


Property Line To Be Established Before Work is set at R.L.W.L. 6-13-72

AM 11433 R.R. Spike NB. RR - S.S. Harry - 75' E. of EL. Sabin St. So. Base Line = @ Sabin Street.



EARTHWORK QUANTITIES

Excavation	Comp. Fill	Loose Fill	Borrow Matl.
3787 CY	1847 CY	566 CY	307 CY
328 (110)	14	367	366
717 CY	264 CY	523 CY	979 CY
361 CY	514 CY		

Use Cement Treated Sub-grade

Bid Item 4 "Borrow Material" is to include all costs of acquiring, excavating & delivering materials to the project for the use of comp fill & loose fill.

SABIN STREET
 S.L. Harry Street to
 S.L. Lot (1), B1K. (1) Wichita Builders Addition
 36" 2'-40" Asphaltic Conc. Pavt.
 4" Roll Type Comb. Cb. + Gtr.
 City of Wichita, Kansas
 R.W. Linn City Engineer
 Date: Dec. 1971 Proj. No. DAKS 567067