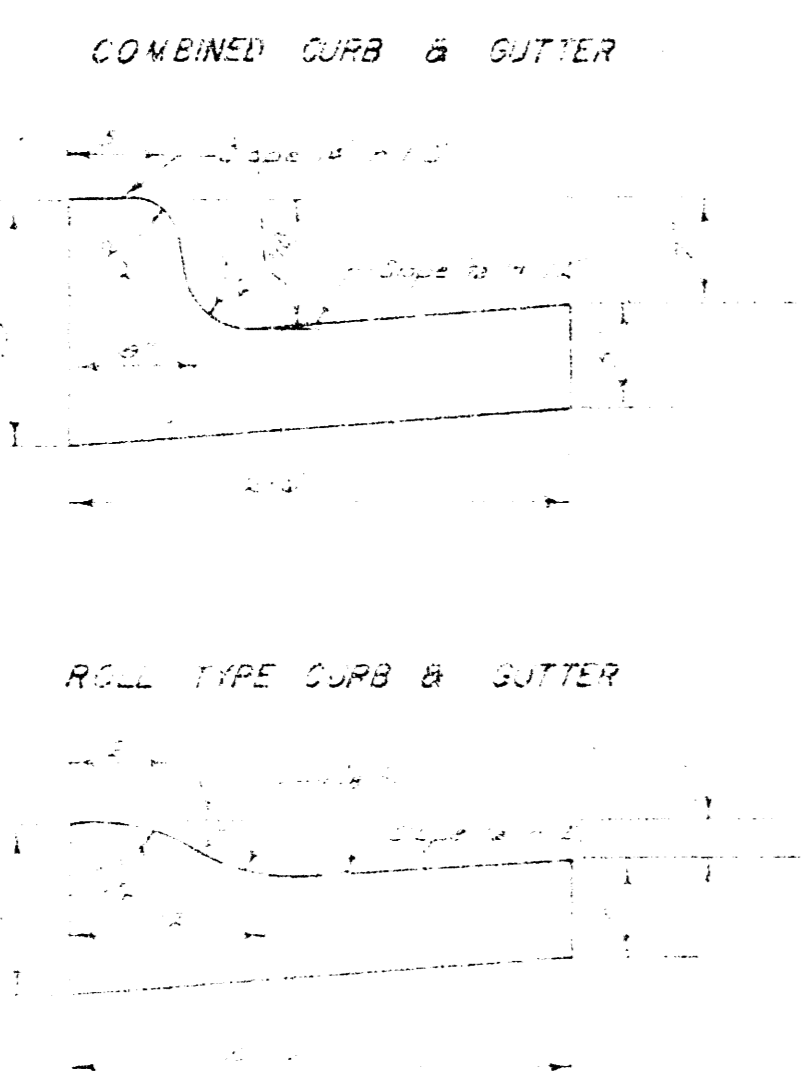
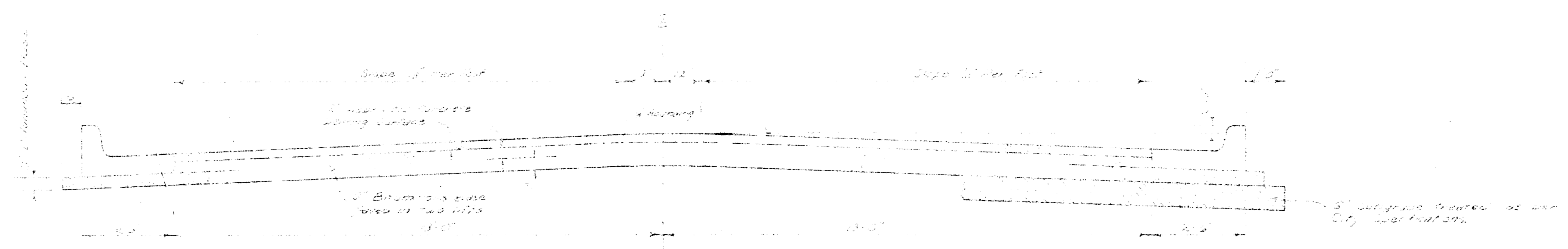


CITY OF MICHIGAN  
 N. LINCOLNWAY FROM TO P.L. SULLER AVE.  
 20-2-00 PAVT. CONC.  
 PROJ. NO. DARS07302



TYPICAL SECTION

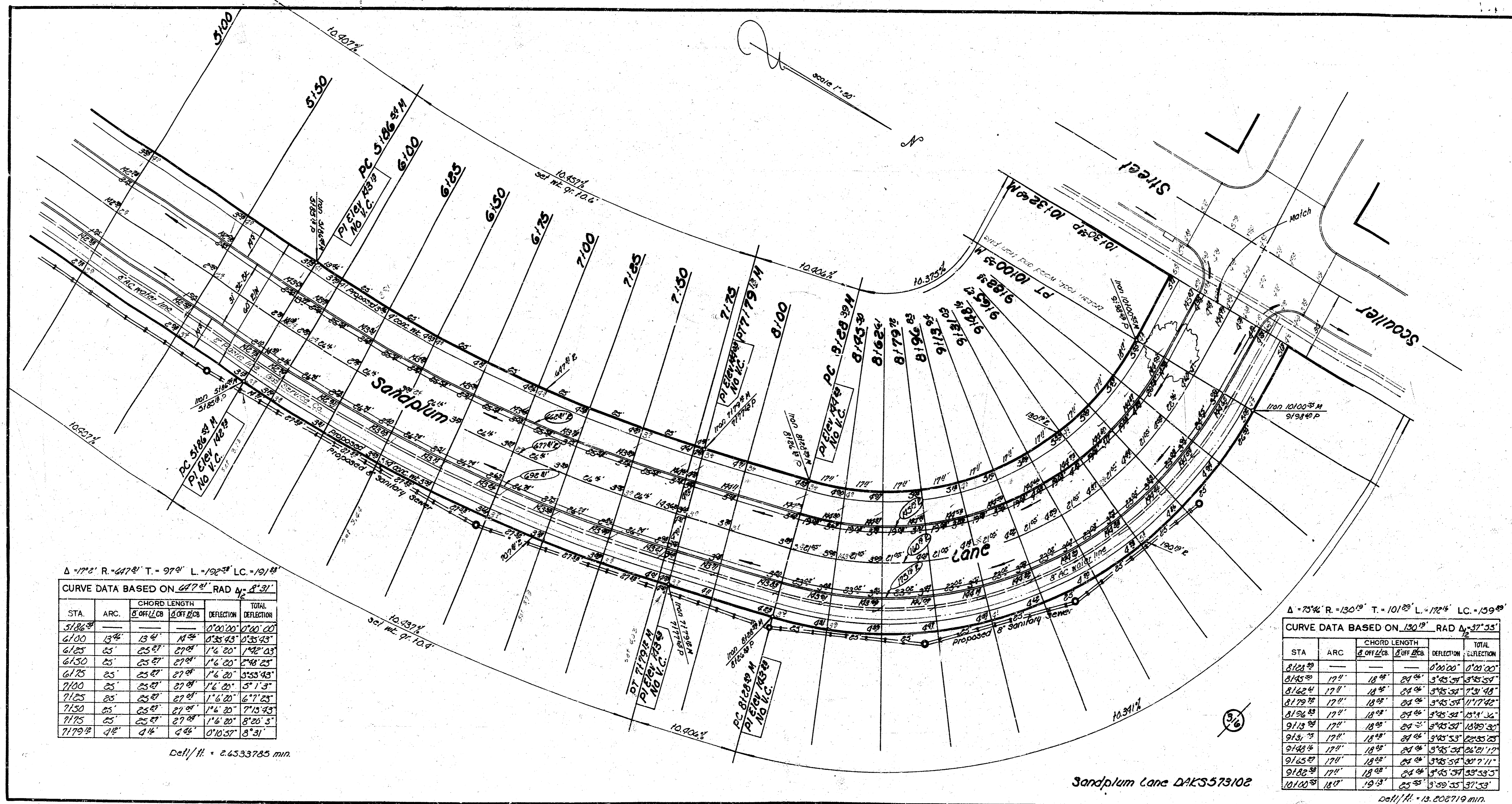
3\"/>

A TACK COAT OF EMULSIFIED ASPHALT (SS-141) SHALL BE APPLIED AT AN APPROXIMATE RATE OF 0.15 GALLONS PER 100 YD. BETWEEN LIFTS OF ASPHALTIC MATERIALS WHEN ORDERED BY THE ENGINEER. THIS TACK COAT SHALL BE PAID FOR SEPARATELY AND SHALL BE CONSIDERED AS NECESSARY TO PRICE OUT FOR ASPHALT PAVEMENT.  
 BITUMINOUS SAND AND ASPHALTIC CONCRETE WEARING SURFACE SHALL BE PLACED WITH A JOINT MACHINE HAVING AUTOMATIC ELECTRONIC CONTROLS FOR GRADE AND BRIDGE. JOINTS SHALL BE STAGGERED A MINIMUM DISTANCE OF 1' WITH JOINTS IN ADJACENT LIFTS AND SUCH THAT A JOINT WILL BE CONSTRUCTED ON THE PAVEMENT CENTERLINE IN THE TOP LIFT.

The A.C. placement between the Comb. Curb & Gutter shall be paid as 3\"/>

CITY OF MICHIGAN, KANSAS  
 ENGINEER  
 DATE: 11/11/00





$\Delta = 174^\circ$  R = 617' T = 97' L = 102' LC = 101'

CURVE DATA BASED ON  $1.2^\circ$  RAD  $\Delta = 87.31'$

STA.	ARC	CHORD LENGTH		DEFLECTION	TOTAL DEFLECTION
		CHORD	OFF SET		
5+78.6	—	—	—	0'00.00"	0'00.00"
6+100	31'	17'	17'	0'35.43"	0'35.43"
6+125	25'	25'	27'	1'6.20"	1'42.03"
6+150	25'	25'	27'	1'6.20"	2'58.23"
6+175	25'	25'	27'	1'6.20"	4'14.43"
7+100	25'	25'	27'	1'6.20"	5'30.63"
7+125	25'	25'	27'	1'6.20"	6'46.83"
7+150	25'	25'	27'	1'6.20"	8'03.03"
7+175	25'	25'	27'	1'6.20"	9'19.23"
7+199.9	4'	4'	4'	0'10.38"	9'29.61"

Dist./ft. = 2.4533785 min.

$\Delta = 73^\circ$  R = 130' T = 101' L = 172' LC = 139'

CURVE DATA BASED ON  $1.30^\circ$  RAD  $\Delta = 37.55'$

STA.	ARC	CHORD LENGTH		DEFLECTION	TOTAL DEFLECTION
		CHORD	OFF SET		
8+124.9	—	—	—	0'00.00"	0'00.00"
8+145.9	21'	18'	24'	5'45.58"	5'45.58"
8+162.4	17'	18'	24'	5'45.58"	11'31.16"
8+179.9	17'	18'	24'	5'45.58"	17'16.74"
8+196.4	17'	18'	24'	5'45.58"	23'02.32"
9+13.9	17'	18'	24'	5'45.58"	28'87.90"
9+13.9	17'	18'	24'	5'45.58"	34'03.48"
9+148.4	17'	18'	24'	5'45.58"	39'19.06"
9+165.9	17'	18'	24'	5'45.58"	44'34.64"
9+182.4	17'	18'	24'	5'45.58"	49'50.22"
10+100.9	18'	19'	25'	5'39.33"	55'29.55"

Dist./ft. = 13.202719 min.