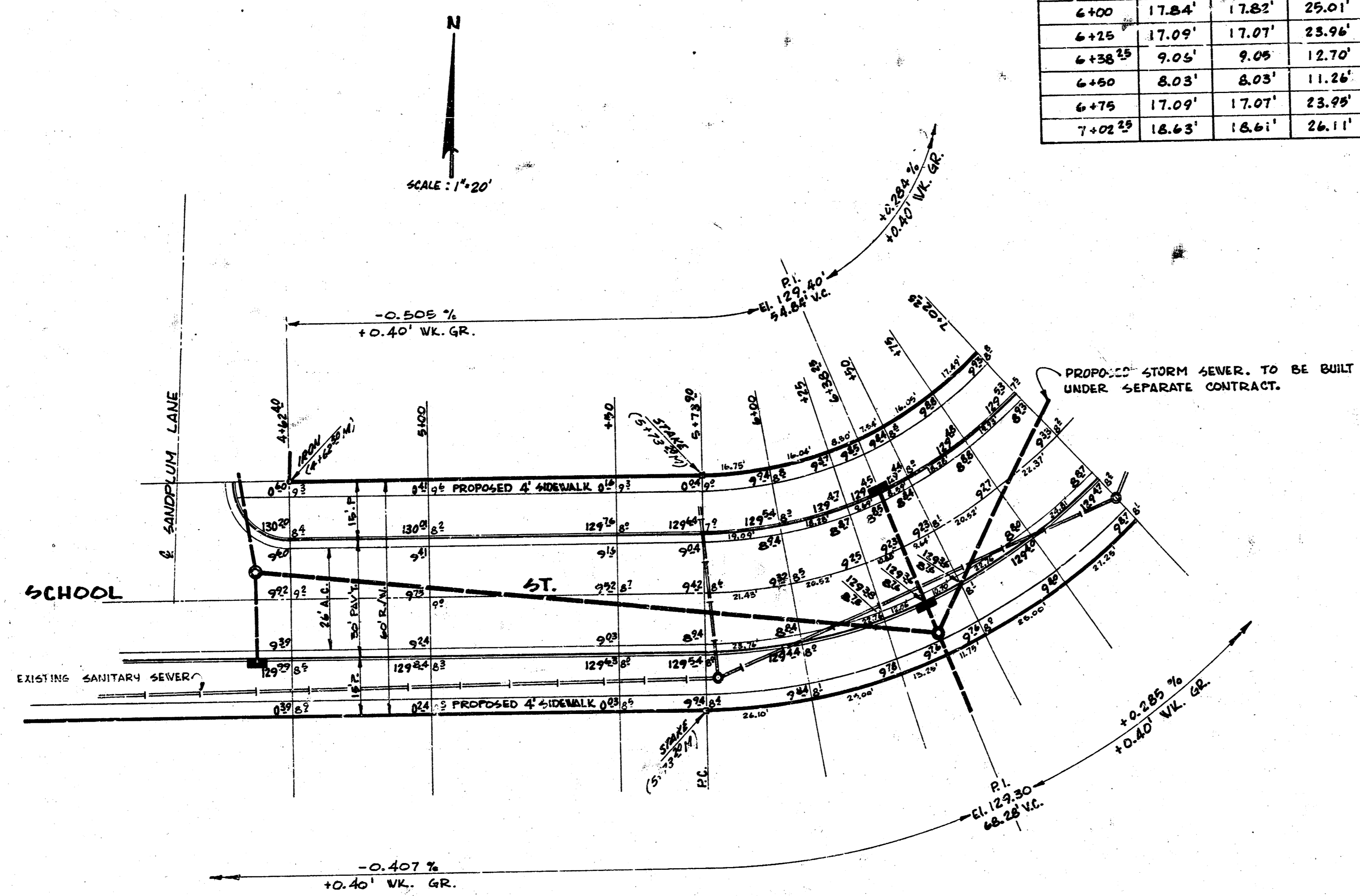


CURVE DATA BASED ON Δ P.C. - R=167.50' $\Delta=43^{\circ}54'14''$ DEFLECTION=10.26193 MM/FT.

STATION	B' OFFSET FROM FACE OF N. Cb.		B' OFFSET FROM FACE OF S. Cb.		DEFLECTION	ACCUMULATED DEFLECTION
	ARC	CHORD	ARC	CHORD		
P.C. 5+78.33	—	—	—	—	—	—
6+00	17.84'	17.82'	25.01'	24.98'	4° 27' 50"	4° 27' 50"
6+25	17.09'	17.07'	23.96'	23.94'	4° 16' 35"	8° 44' 25"
6+50	9.05'	9.05'	12.70'	12.69'	2° 15' 58"	11° 00' 21"
6+60	8.03'	8.03'	11.26'	11.26'	2° 00' 35"	13° 00' 56"
6+75	17.09'	17.07'	23.96'	23.95'	4° 16' 35"	17° 17' 25"
7+02.33	18.63'	18.61'	26.11'	26.08'	4° 39' 58"	21° 57' 07"



SCHOOL STREET

PROJECT No. C18-66
SHEET 2 OF 3