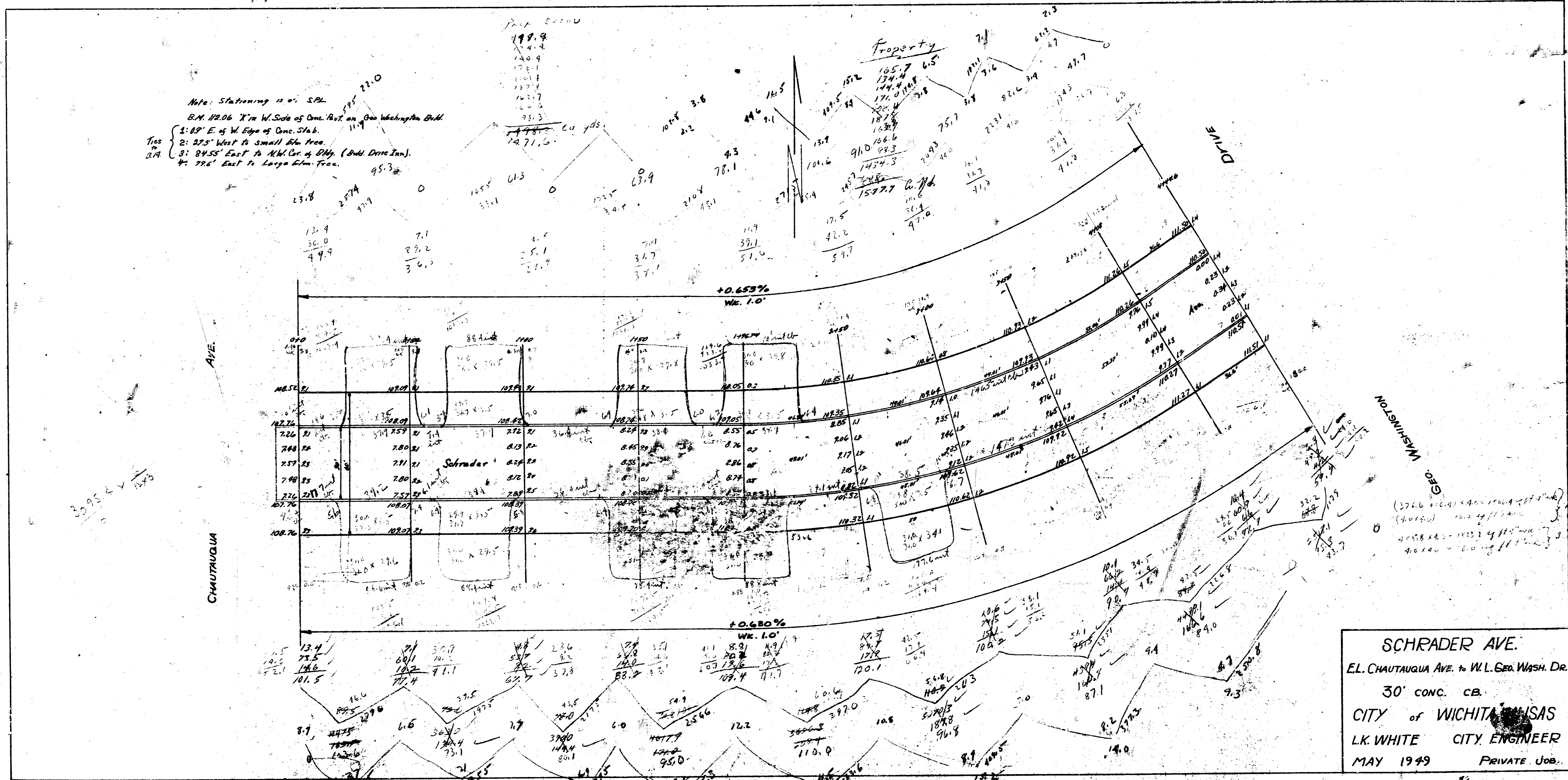


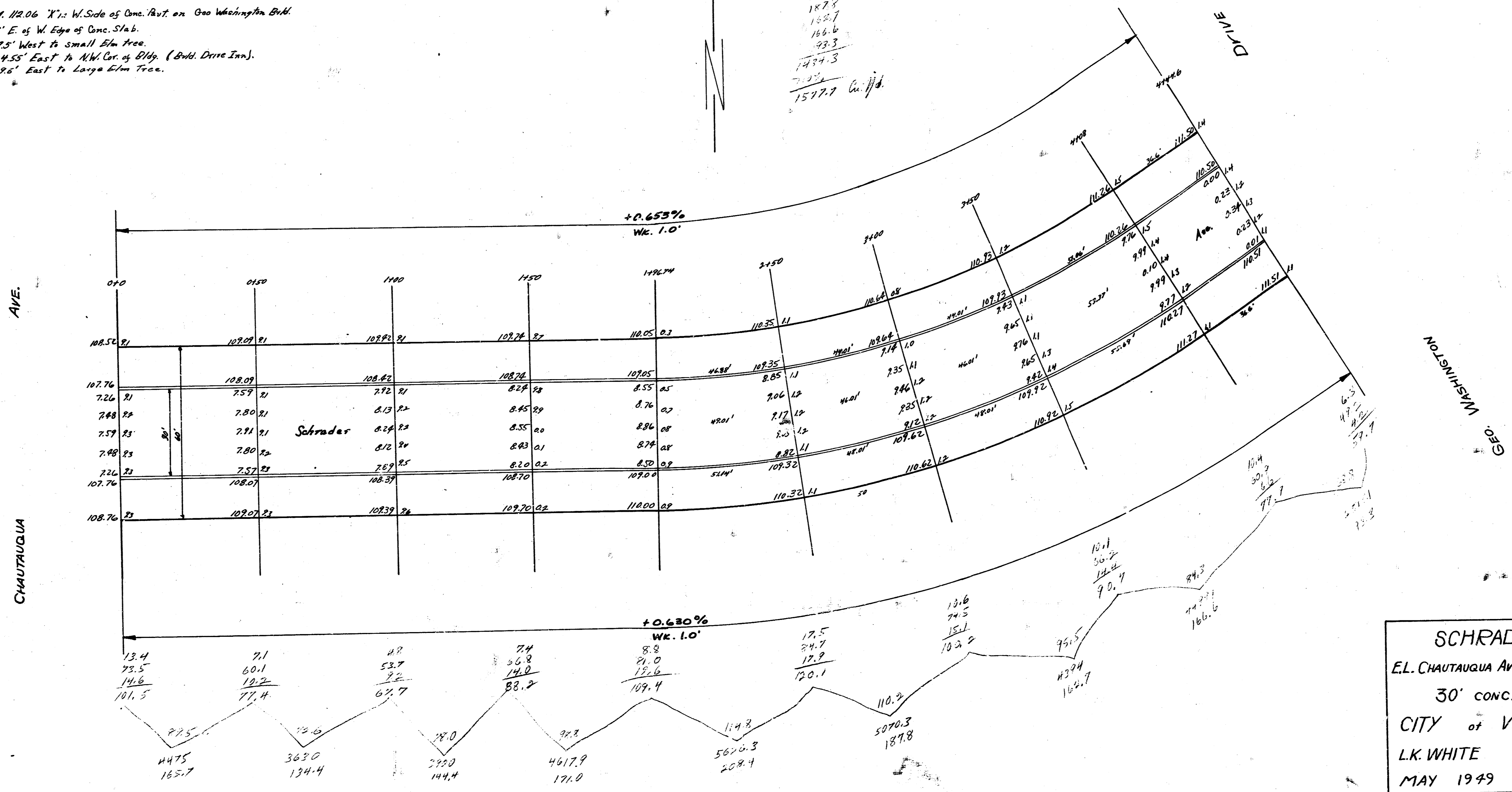
Note: Stationing is in S.P.
 B.M. 12.06 17' W. Side of Conc. Pav. on Geo. Washington Blvd.
 (1: 12' E. of W. Edge of Conc. Slab.
 2: 27.5' West to Small Elm Tree.
 3: 84.55' East to N.W. Cor. of Bldg. (Add Drive In).
 4: 77.6' East to Large Elm Tree.



SCHRADER AVE.
 E.L. CHAUTAQUA AVE. to W.L. Geo. Wash. Dr.
 30' CONC. CB.
 CITY of WICHITA, KANSAS
 L.K. WHITE CITY ENGINEER
 MAY 1949 PRIVATE JOB.

N.B.: Stationing is on S.P.
 B.M. 112.06 '11: W. Side of One Foot on One Washington Blvd.
 Ties:
 1: 82' E. of W. Edge of One Slab.
 2: 27.5' West to small Elm tree.
 3: 84.55' East to NW Cor. of Alley (Bull. Drive Inn).
 4: 78.6' East to Large Elm Tree.

PROPERTY
 155.7
 134.4
 144.4
 171.2
 182.4
 182.8
 182.7
 166.6
 93.3
 1437.3
 1577.7 Cu. Yds.



SCHRADER AVE.
 E.L. CHAUTAUQUA AVE. to W.L. GEO. WASH. DR.
 30' CONC. CB.
 CITY OF WICHITA, KANSAS
 L.K. WHITE CITY ENGINEER
 MAY 1949 PRIVATE JOB