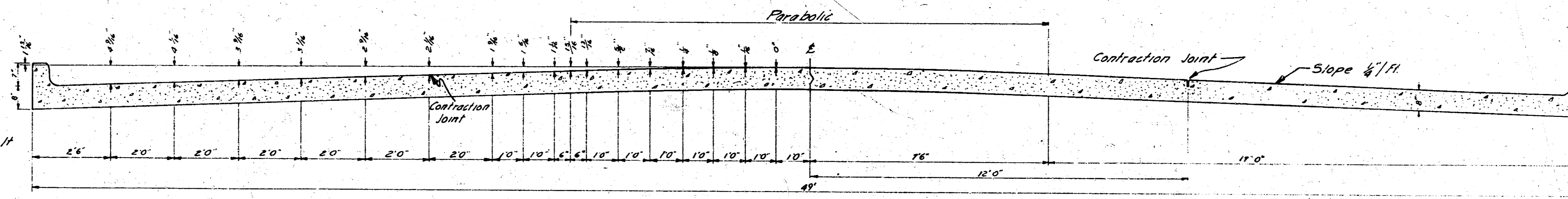
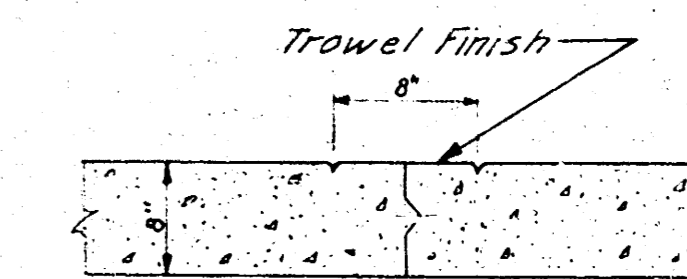


SENECA

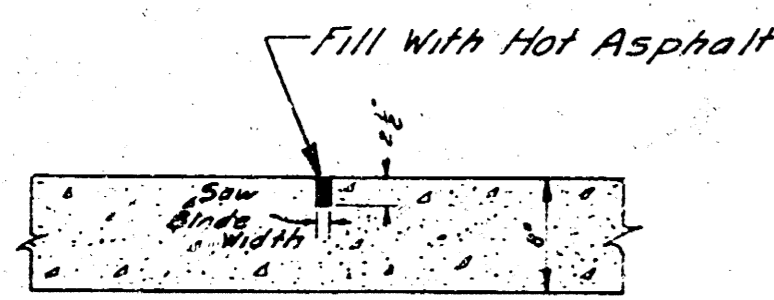
SL. 31ST ST. SO.—S.L. PAWNEE
PROJECT NO. C18-49



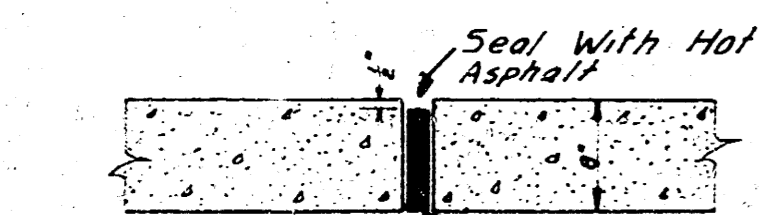
TYPICAL SECTION
No Scale



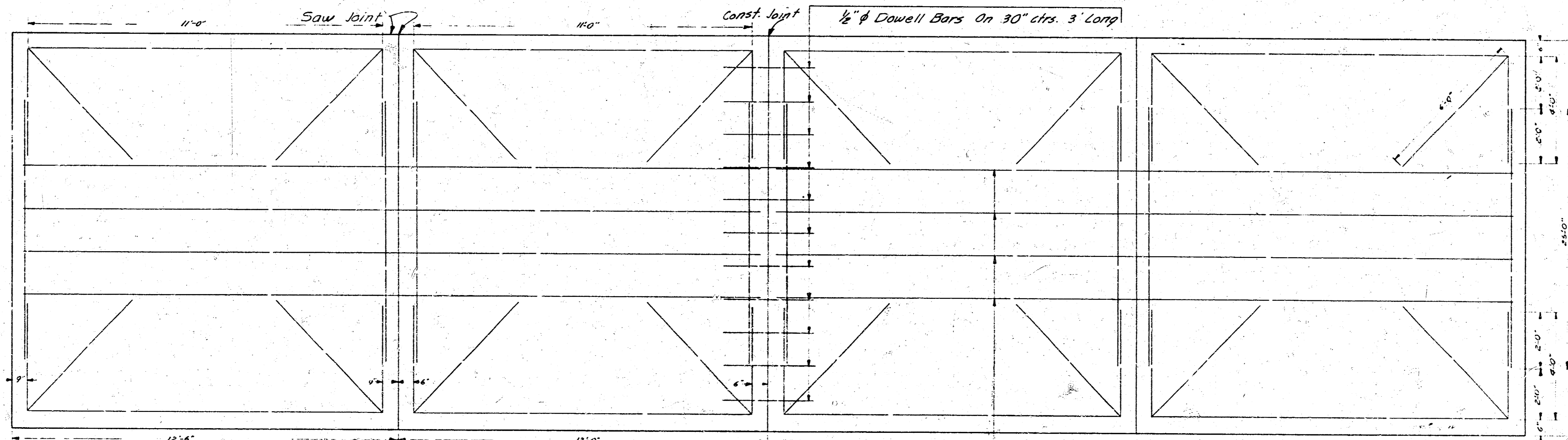
MARKER DETAIL
No Scale
Place Full Length of Job



CONTRACTION JOINT
No Scale
To Be Used At 30' Intervals
Except Where An Expansion
Joint Is Used



EXPANSION JOINT
No Scale
To Be Used At 120' Intervals



STEEL PATTERN
No Scale

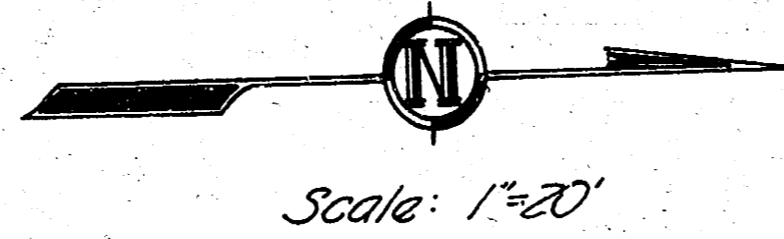
4 - 3/4" ϕ Bars, Equally Spaced, 24'-0" Long

Use 3/4" ϕ Bars Unless Otherwise Specified

Survey of Main Street, Pawnee, Oklahoma, 1912

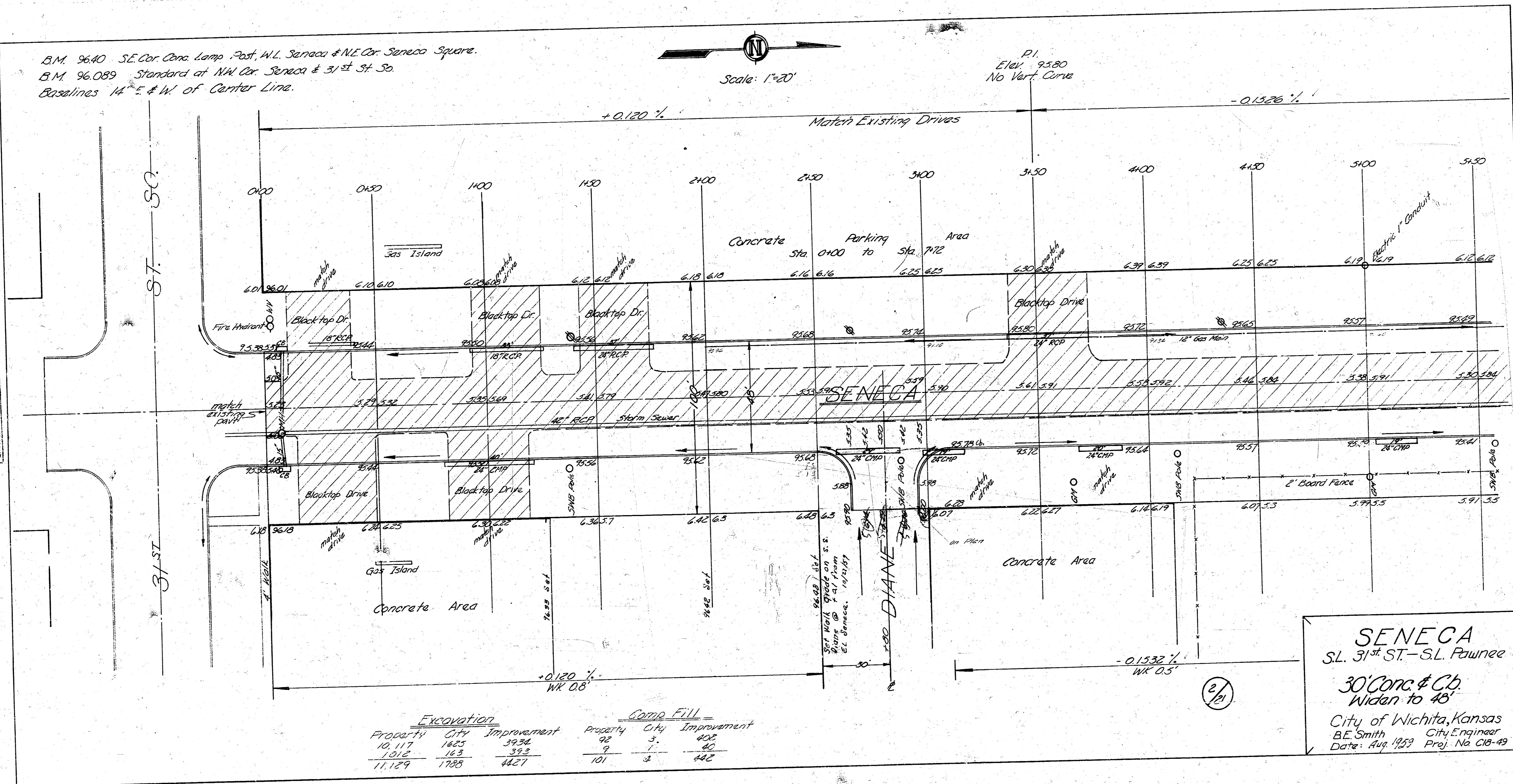


B.M. 96.40 S.E. Cor. Conc. Lamp Post, W.L. Seneca & N.E. Cor. Seneca Square.
 B.M. 96.089 Standard at NW Cor. Seneca & 31st St. So
 Baselines 14" E & W of Center Line.



P.I.
 Elev. 95.80
 No Vert. Curve

Survey C. T. McArdle, 3/28/59
 Plan
 Jones
 8-27-59
 Checked



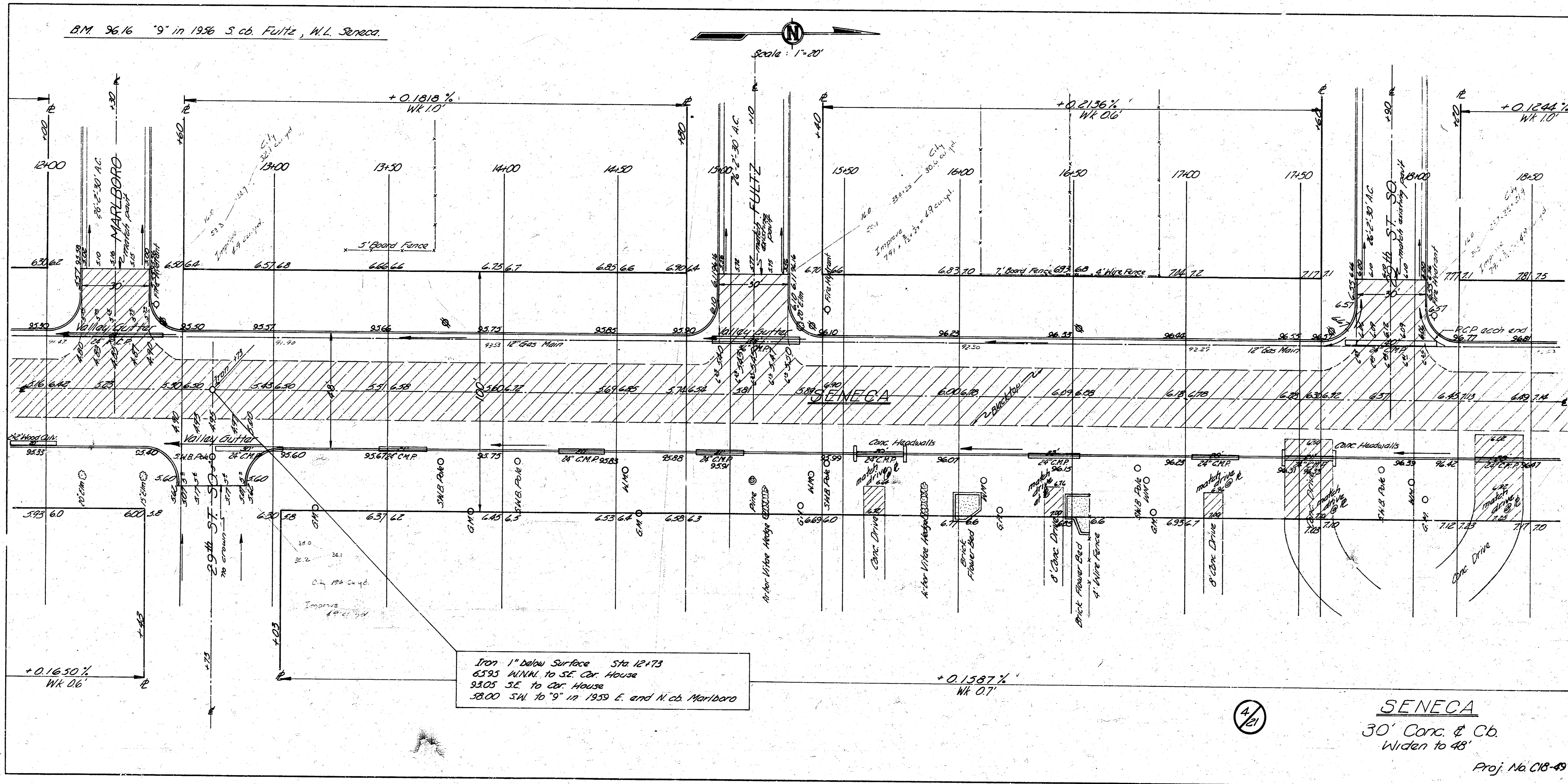
Excavation			Comp. Fill		
Property	City	Improvement	Property	City	Improvement
10,117	1825	39.34	92	3	402
1202	163	39.3	9	1	42
11,129	1785	44.21	101	3	442

SENECA
 S.L. 31st ST. - S.L. Pawnee
 30' Conc. & Cb.
 Widen to 48'
 City of Wichita, Kansas
 B.E. Smith City Engineer
 Date: Aug. 1959 Proj. No. C18-49

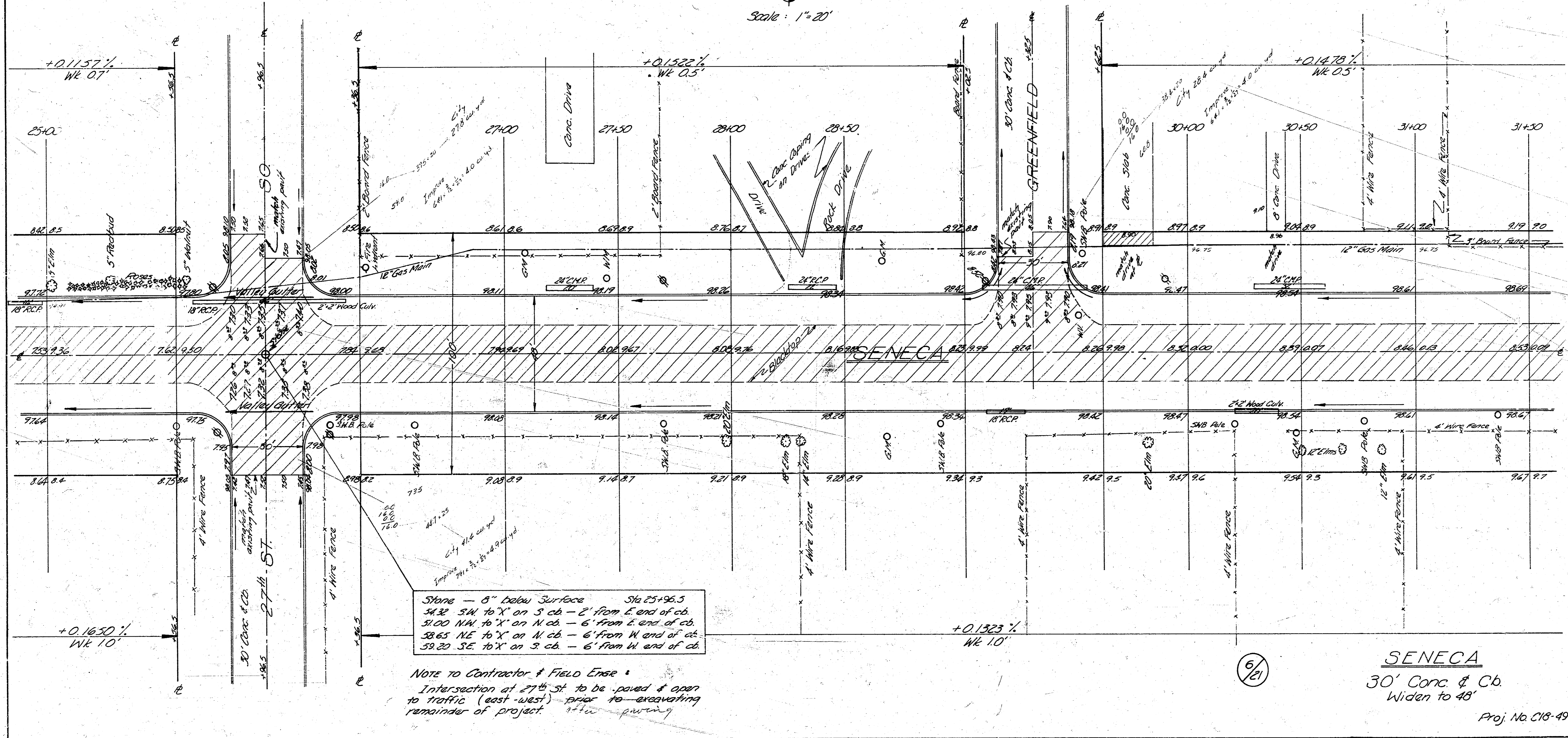
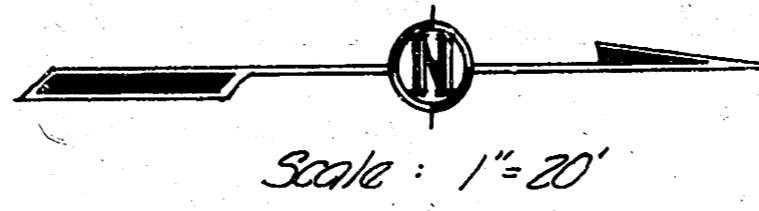
2/11

BM 96.16 '9" in 1936 S. of FULTZ, W.L. Seneca

Scale: 1"=20'



B.M. 98645 Standard of Seneca & 27th St. 50.

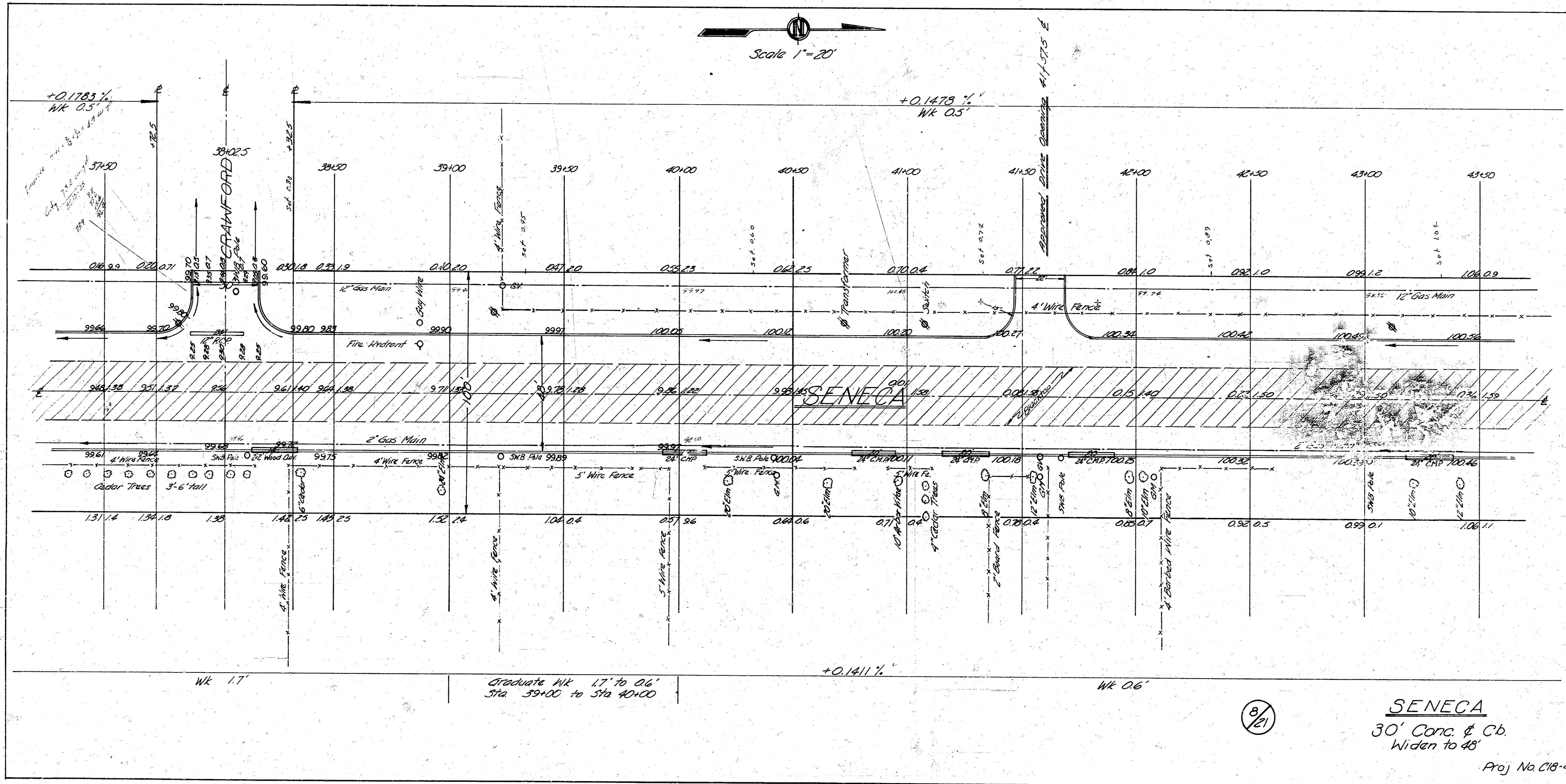


Stone - 8" Below Surface Sta 25+96.5
 34.32 SW to "X" on S cb - 2' from E. end of cb.
 31.00 NW to "X" on N cb - 6' from E. end of cb.
 38.65 NE to "X" on N cb - 6' from W. end of cb.
 39.20 SE to "X" on S cb - 6' from W. end of cb.

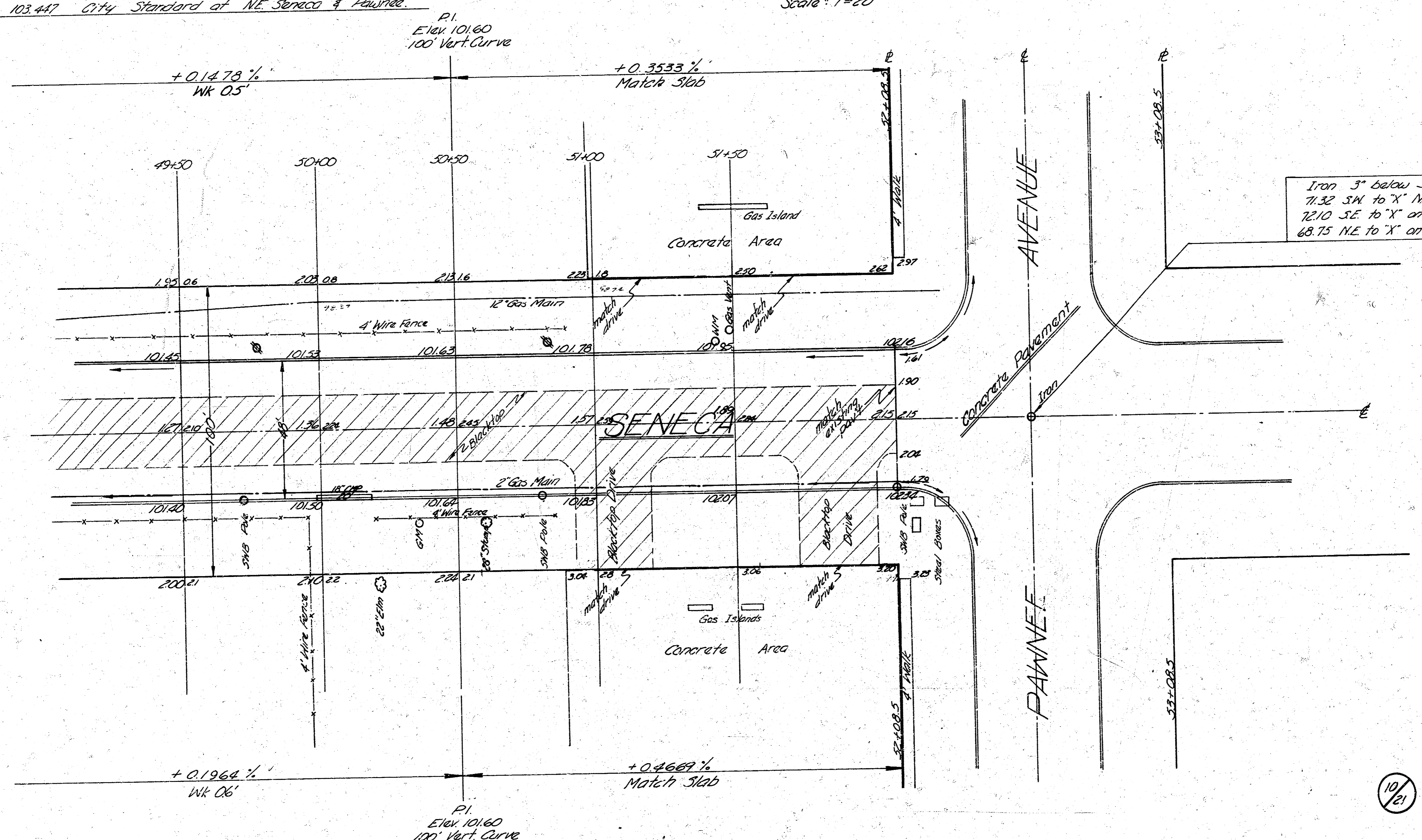
Note to Contractor & Field Eng. -
 Intersection of 27th St. to be paved & open
 to traffic (east-west) prior to excavating
 remainder of project. *etc. paving*

(5/21)

SENECA
 30' Conc. & Cb.
 Widen to 48'
 Proj. No. C18-49



B.M. 103.447 City Standard at NE Seneca & Pawnee



Iron 3" below Surface
 71.32 SW to "X" NE Cor. Conc. Base, Lt. Post
 10'10" SE to "X" on Pt. of Wk. WS of Drive
 68.75 NE to "X" on Pt. of Wk. N.L. Pawnee.

10/21

SENECA
 30' Conc. & Cb.
 Widen to 48'
 Proj. No. C18-49