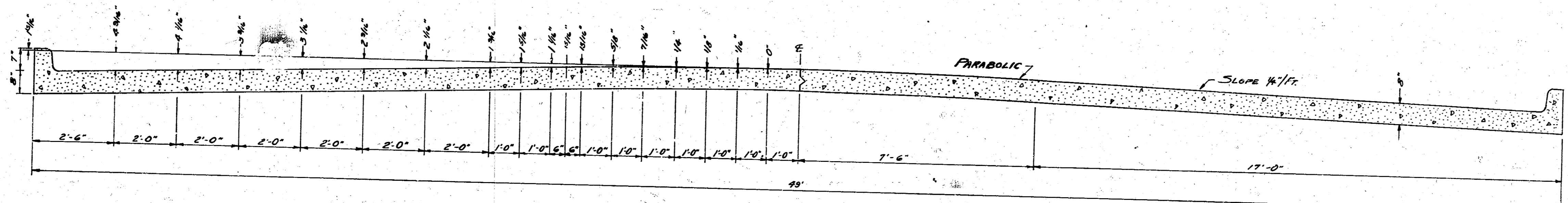
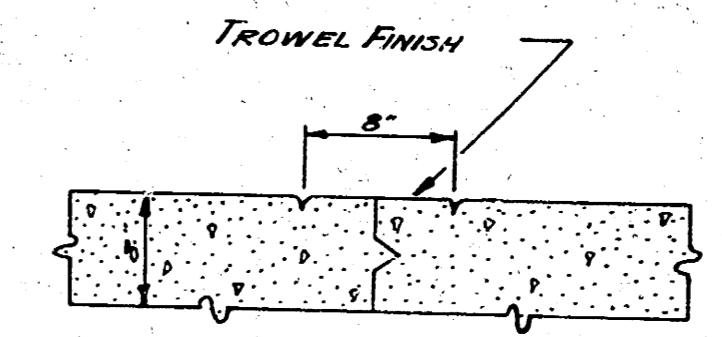


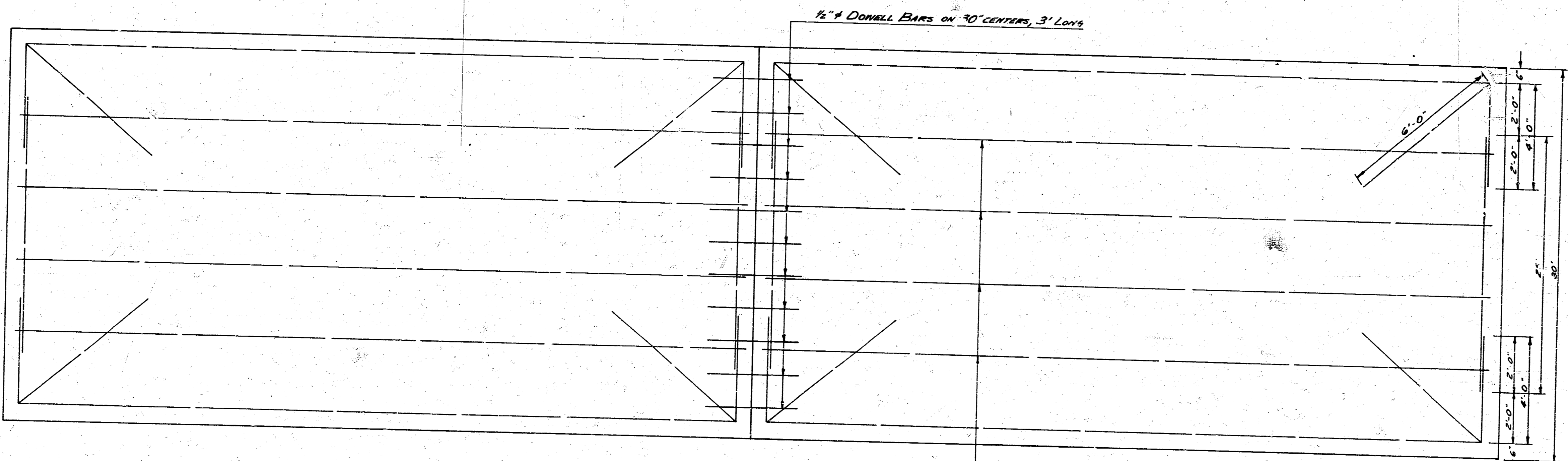
**SENECA**  
 N.L. WHEELER TO S.L. DAYTON  
 48'-8" CONCRETE AND CURB



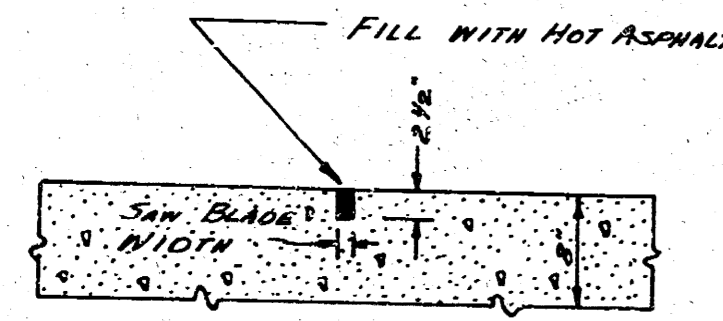
**TYPICAL SECTION**  
 No SCALE



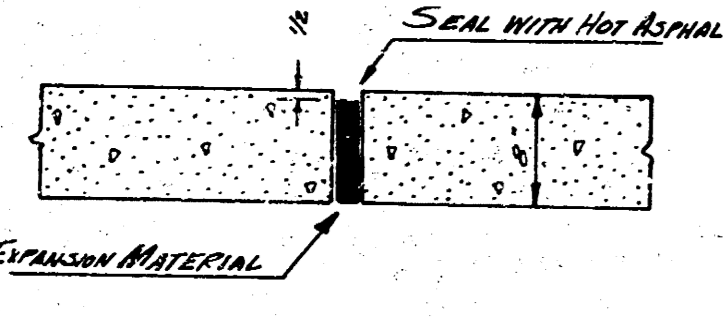
**E MARKER DETAIL**  
 No SCALE  
 PLACE FULL LENGTH OF JOB



**STEEL PATTERN**  
 No SCALE  
 USE #4 BARS UNLESS OTHERWISE SPECIFIED



**CONTRACTION JOINT**  
 No SCALE  
 TO BE USED AT 30' INTERVALS  
 EXCEPT WHERE AN EXPANSION JOINT  
 IS USED



**EXPANSION JOINT**  
 No SCALE  
 TO BE USED AT 120' INTERVALS

1/16





BM SE Cor conc base RR  
517.71 SW Seneca & Walker  
10 7 808

10+57 18" Elm 30' E  
10+58 18" Elm 30' E  
10+59 18" Elm 30' E

10+77 18" Elm 10' E  
10+78 18" Elm 10' E  
10+79 18" Elm 10' E

11+01 18" Elm 10' E  
11+02 18" Elm 10' E  
11+03 18" Elm 10' E

11+04 18" Elm 10' E  
11+05 18" Elm 10' E  
11+06 18" Elm 10' E

11+07 18" Elm 10' E  
11+08 18" Elm 10' E  
11+09 18" Elm 10' E

11+10 18" Elm 10' E  
11+11 18" Elm 10' E  
11+12 18" Elm 10' E

11+13 18" Elm 10' E  
11+14 18" Elm 10' E  
11+15 18" Elm 10' E

11+16 18" Elm 10' E  
11+17 18" Elm 10' E  
11+18 18" Elm 10' E

11+19 18" Elm 10' E  
11+20 18" Elm 10' E  
11+21 18" Elm 10' E

11+22 18" Elm 10' E  
11+23 18" Elm 10' E  
11+24 18" Elm 10' E

11+25 18" Elm 10' E  
11+26 18" Elm 10' E  
11+27 18" Elm 10' E

11+28 18" Elm 10' E  
11+29 18" Elm 10' E  
11+30 18" Elm 10' E

11+31 18" Elm 10' E  
11+32 18" Elm 10' E  
11+33 18" Elm 10' E

11+34 18" Elm 10' E  
11+35 18" Elm 10' E  
11+36 18" Elm 10' E

11+37 18" Elm 10' E  
11+38 18" Elm 10' E  
11+39 18" Elm 10' E

11+40 18" Elm 10' E  
11+41 18" Elm 10' E  
11+42 18" Elm 10' E

11+43 18" Elm 10' E  
11+44 18" Elm 10' E  
11+45 18" Elm 10' E

11+46 18" Elm 10' E  
11+47 18" Elm 10' E  
11+48 18" Elm 10' E

11+49 18" Elm 10' E  
11+50 18" Elm 10' E  
11+51 18" Elm 10' E

11+52 18" Elm 10' E  
11+53 18" Elm 10' E  
11+54 18" Elm 10' E

11+55 18" Elm 10' E  
11+56 18" Elm 10' E  
11+57 18" Elm 10' E

11+58 18" Elm 10' E  
11+59 18" Elm 10' E  
11+60 18" Elm 10' E

11+61 18" Elm 10' E  
11+62 18" Elm 10' E  
11+63 18" Elm 10' E

11+64 18" Elm 10' E  
11+65 18" Elm 10' E  
11+66 18" Elm 10' E

11+67 18" Elm 10' E  
11+68 18" Elm 10' E  
11+69 18" Elm 10' E

11+70 18" Elm 10' E  
11+71 18" Elm 10' E  
11+72 18" Elm 10' E

11+73 18" Elm 10' E  
11+74 18" Elm 10' E  
11+75 18" Elm 10' E

11+76 18" Elm 10' E  
11+77 18" Elm 10' E  
11+78 18" Elm 10' E

11+79 18" Elm 10' E  
11+80 18" Elm 10' E  
11+81 18" Elm 10' E

11+82 18" Elm 10' E  
11+83 18" Elm 10' E  
11+84 18" Elm 10' E

11+85 18" Elm 10' E  
11+86 18" Elm 10' E  
11+87 18" Elm 10' E

11+88 18" Elm 10' E  
11+89 18" Elm 10' E  
11+90 18" Elm 10' E

11+91 18" Elm 10' E  
11+92 18" Elm 10' E  
11+93 18" Elm 10' E

11+94 18" Elm 10' E  
11+95 18" Elm 10' E  
11+96 18" Elm 10' E

11+97 18" Elm 10' E  
11+98 18" Elm 10' E  
11+99 18" Elm 10' E

11+100 18" Elm 10' E  
11+101 18" Elm 10' E  
11+102 18" Elm 10' E

11+103 18" Elm 10' E  
11+104 18" Elm 10' E  
11+105 18" Elm 10' E

11+106 18" Elm 10' E  
11+107 18" Elm 10' E  
11+108 18" Elm 10' E

11+109 18" Elm 10' E  
11+110 18" Elm 10' E  
11+111 18" Elm 10' E

11+112 18" Elm 10' E  
11+113 18" Elm 10' E  
11+114 18" Elm 10' E

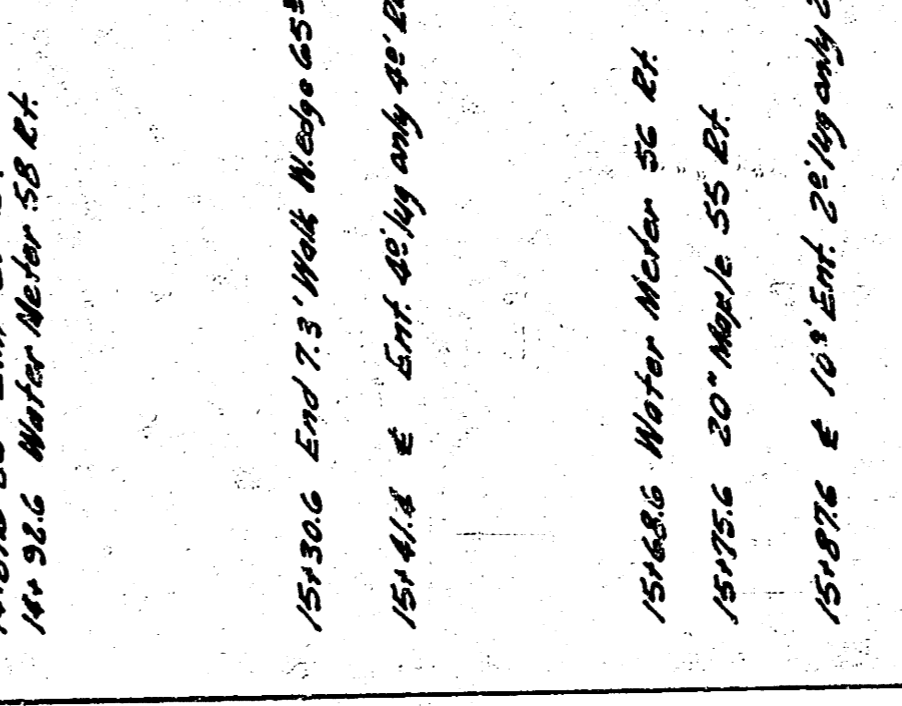
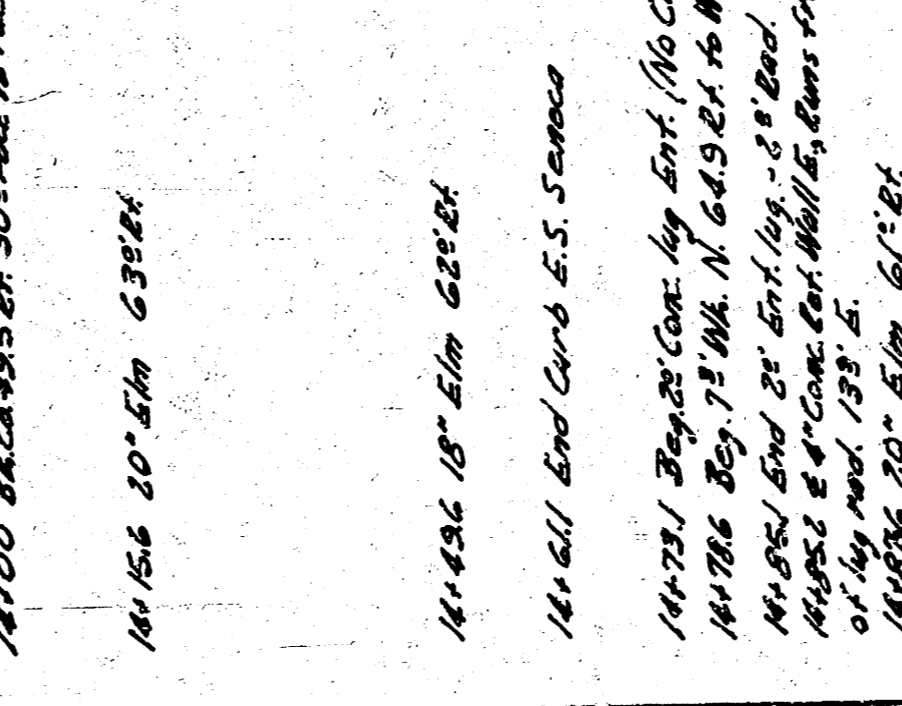
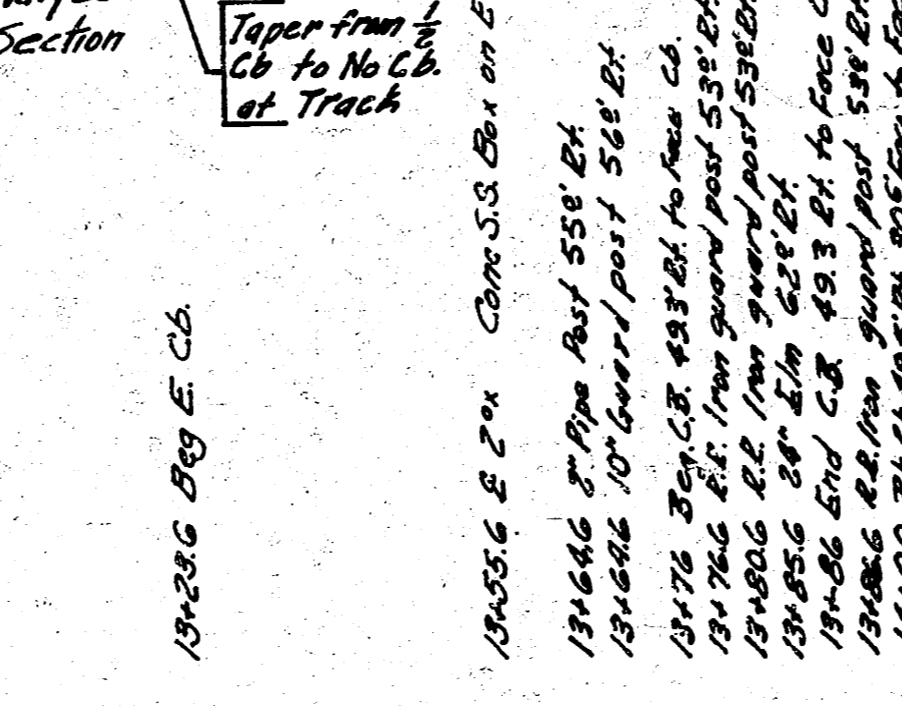
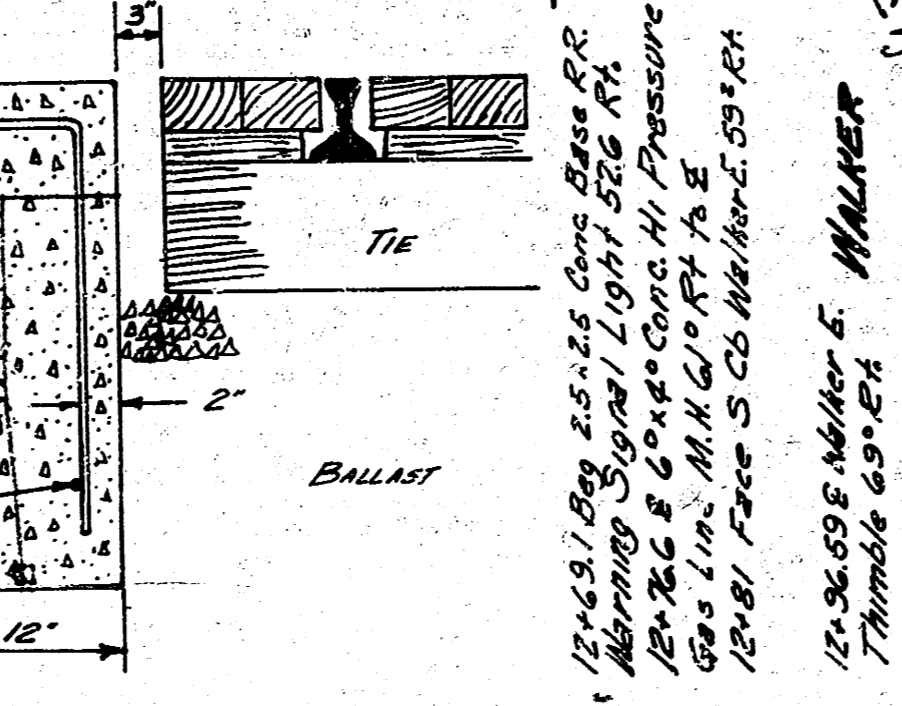
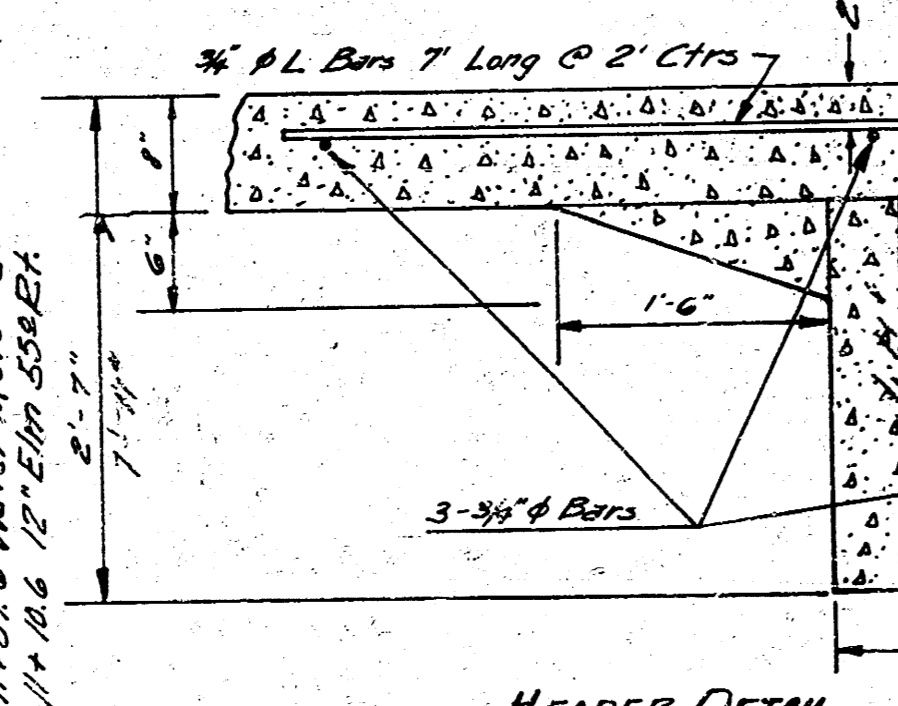
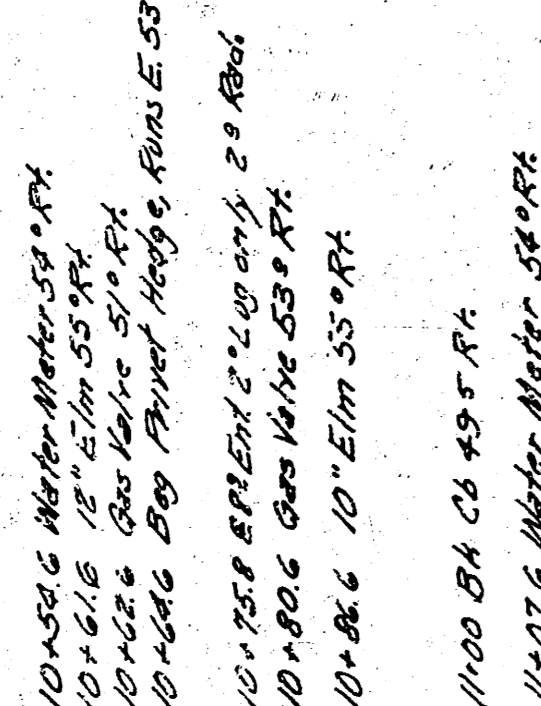
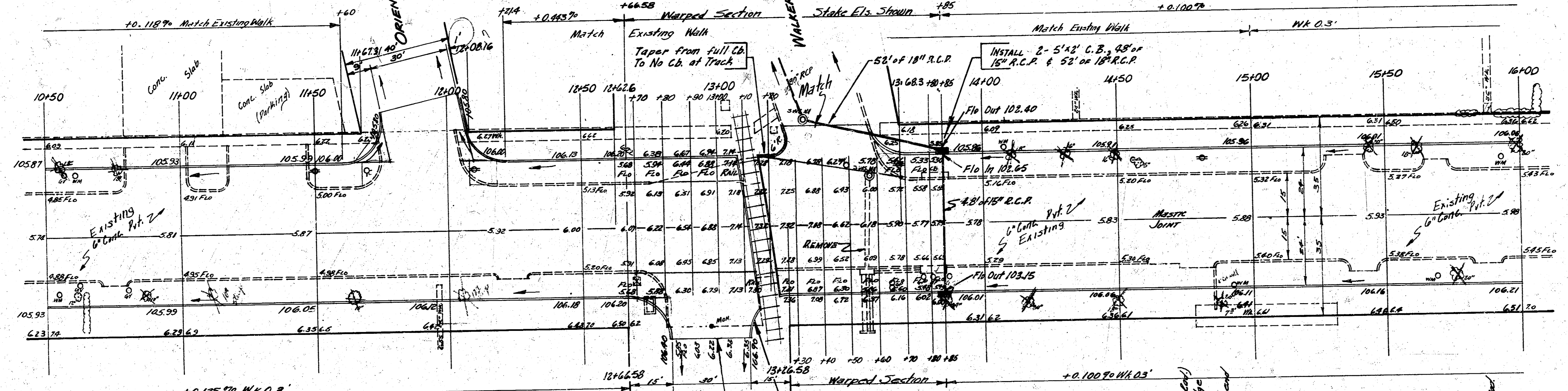
11+115 18" Elm 10' E  
11+116 18" Elm 10' E  
11+117 18" Elm 10' E

11+118 18" Elm 10' E  
11+119 18" Elm 10' E  
11+120 18" Elm 10' E

NOTE TO CONTRACTOR: SALVAGE  
MANHOLE & CATCH BASIN CASTINGS &  
DELIVER TO CITY YARD.

EXCAV  
PROP. CHANGES CITY  
1972.00 1052.00 872.00

FILE  
PROP. 1052.00  
1052.00



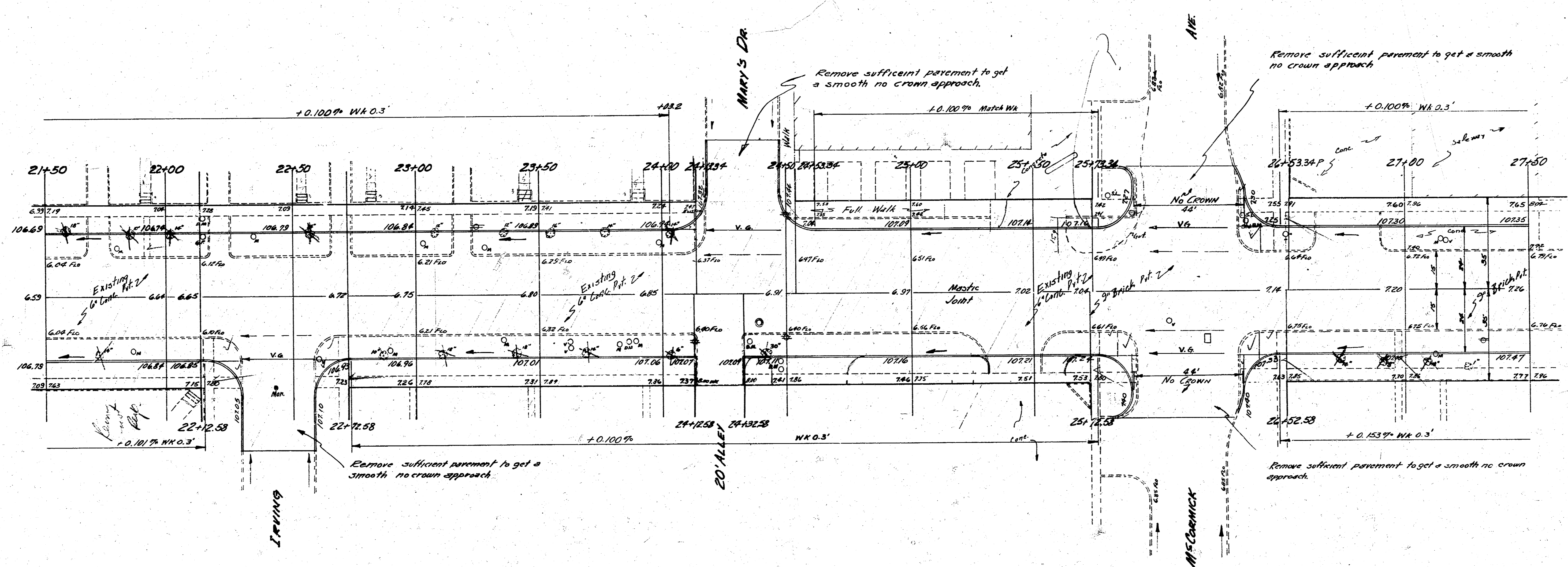
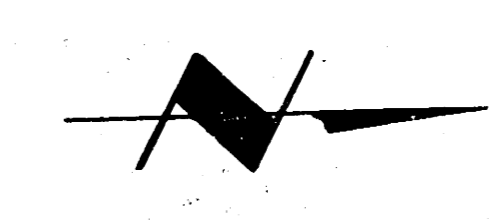
SENECA ST  
PROJ. CA-180  
4/14



B.M. 106.656 @ in 64th NW Corner W.L. Senger  
 B.M. 107.228 Standard NW Corner Senger & McCormick

FILL  
 Prop. 10.8 Cu/Yds  
 City 17.3 Cu/Yds

EXCAV.  
 Prop. 806.3 Cu/Yds  
 City 170.2 Cu/Yds



SENECA ST.  
 PROJECT C14-180

6/12

B.M. 10.013 K in Keeler SS Inter-D, NE Cor. Seneca & Murrel  
 B.M. 108.385 K in Kenster, frt. of W. S., SE Cor. Seneca & Dayton  
 B.M. 108.336 K in Kenster, SE Cor. Inter-D, NW Hendry & Seneca

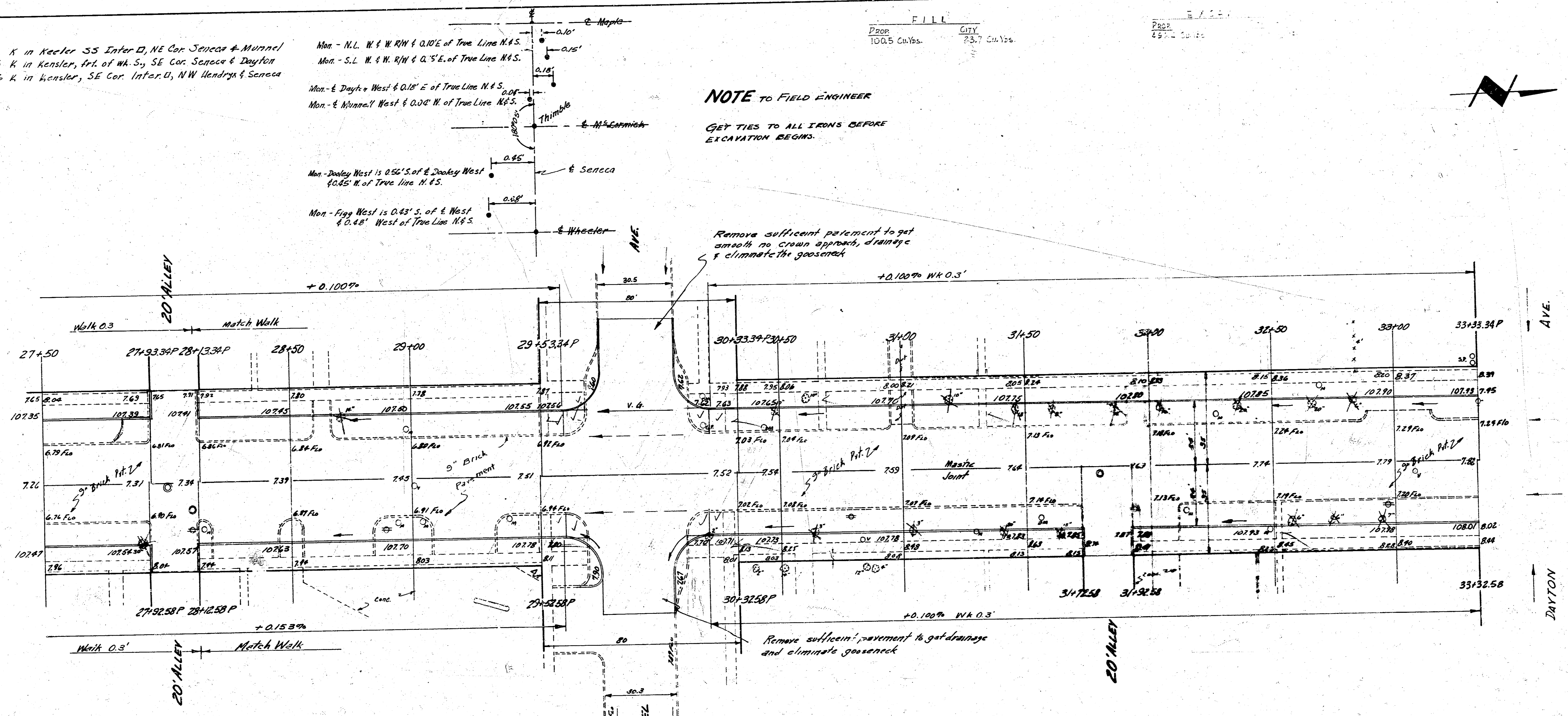
Mon - N.L. W & W.R.W. of True Line N & S.  
 Mon - S.L. W & W.R.W. of True Line N & S.  
 Mon - E. Dayth West & 0.18' E of True Line N & S.  
 Mon - E. Murrel West & 0.04' W of True Line N & S.  
 Mon - Dayth West is 0.56' S of E. Dayth West  
 & 0.52' W of True Line N & S.  
 Mon - Dayth West is 0.43' S. of E. West  
 & 0.48' West of True Line N & S.

FILL  
 Prec. 100.5 Cu.Yds. CITY 23.7 Cu.Yds.

**NOTE TO FIELD ENGINEER**  
 GET TIES TO ALL IRONS BEFORE  
 EXCAVATION BEGINS.

Remove sufficient pavement to get  
 smooth no crown approach, drainage  
 & eliminate the goose-neck

Remove sufficient pavement to get drainage  
 and eliminate goose-neck



SENECA ST.  
 PROJ. CM-120

7/10