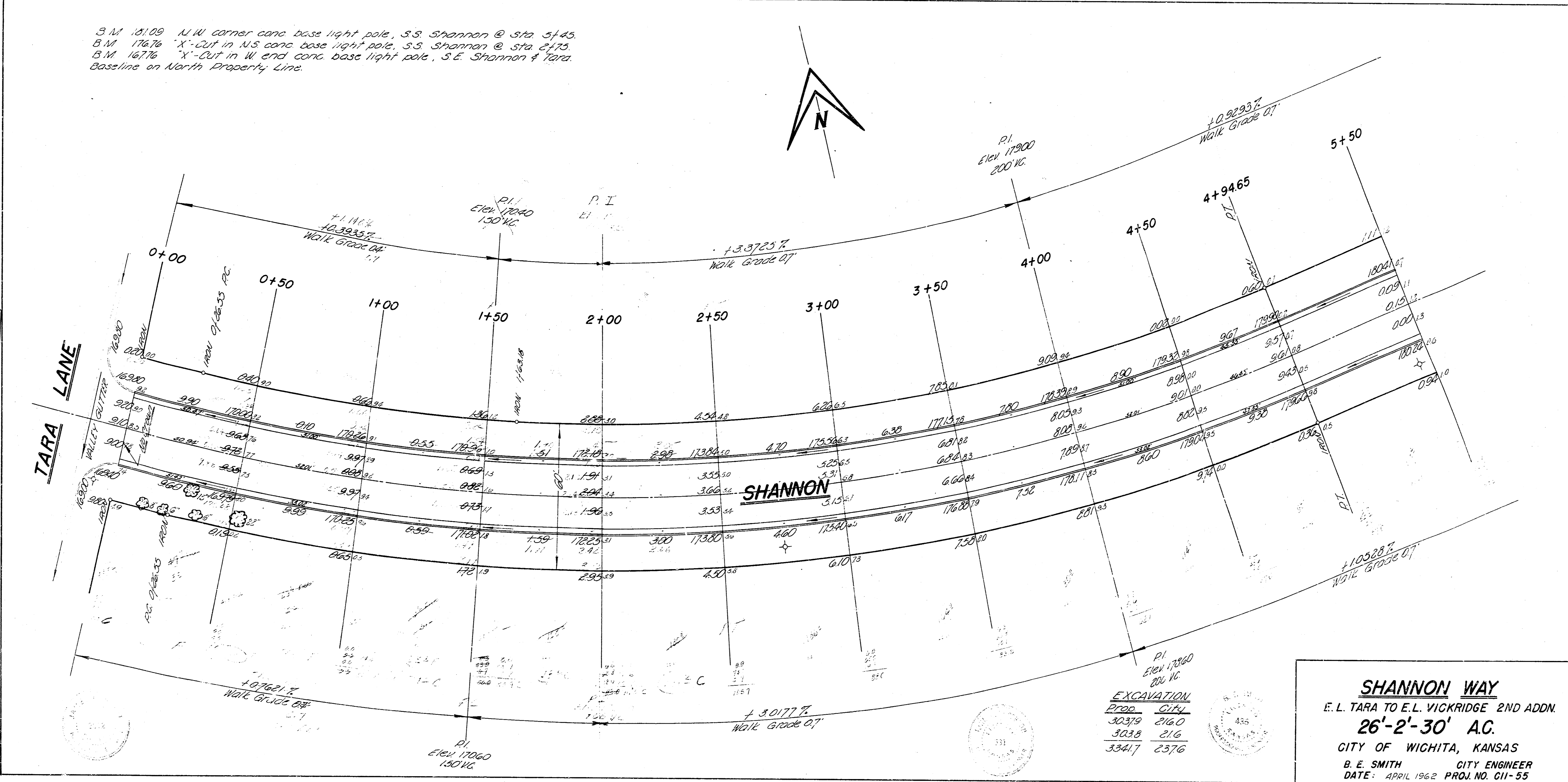
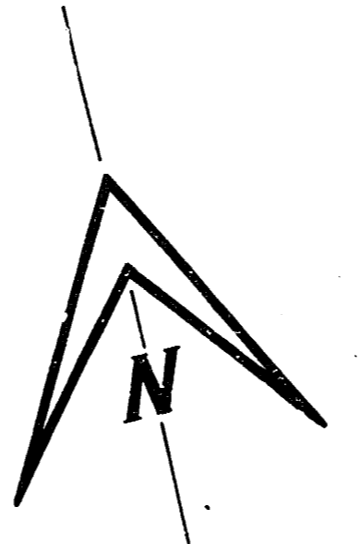


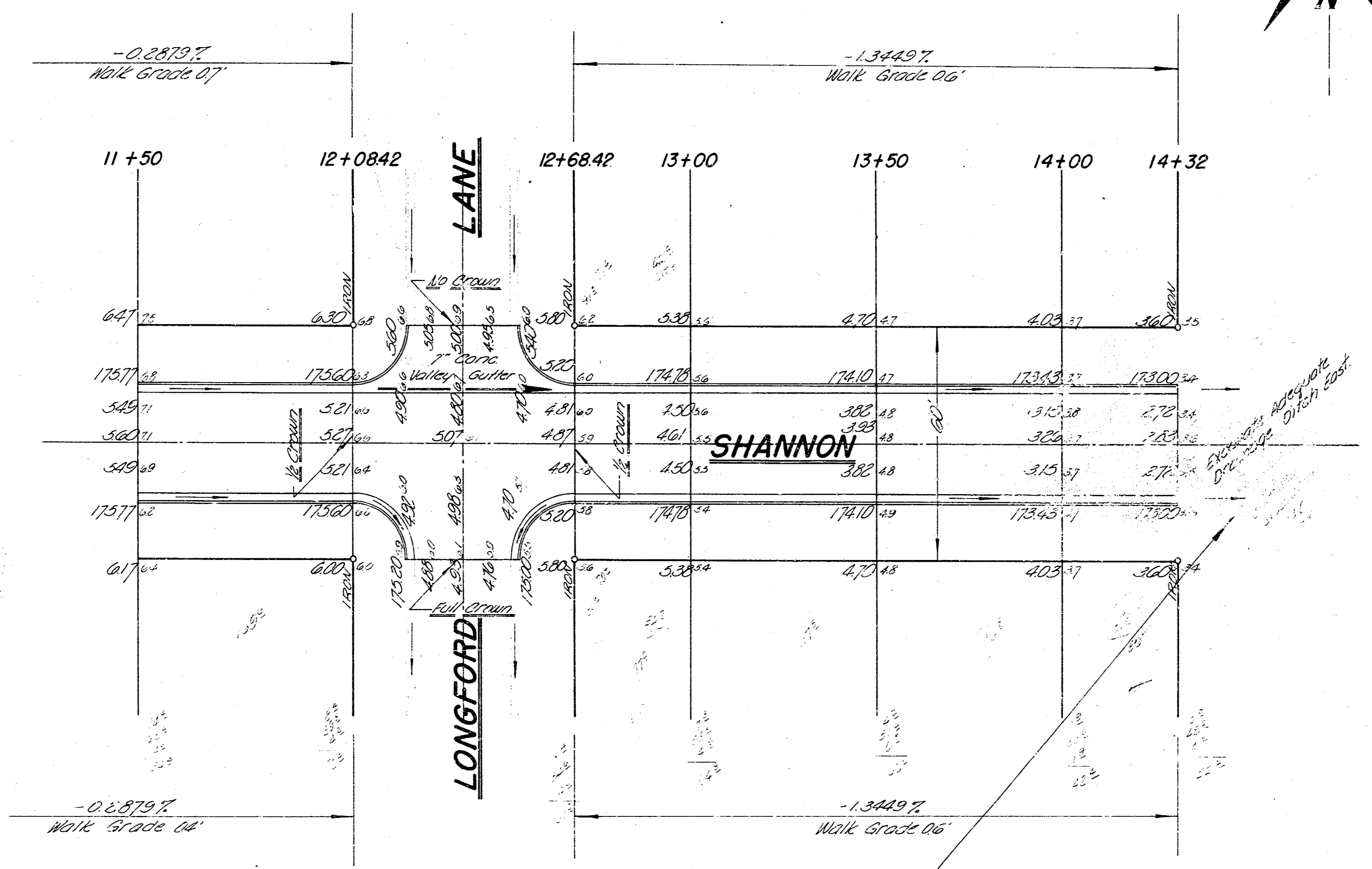
3 M 181.09 N.W. corner conc base light pole, S.S. Shannon @ Sta 5+45.
 B.M. 17676 "X"-Cut in N.S. conc base light pole, S.S. Shannon @ Sta 2+75.
 B.M. 16776 "X"-Cut in W end conc base light pole, S.E. Shannon & Tara.
 Baseline on North Property Line.



CHM
 J.C.

EXCAVATION	
PROP.	CITY
30379	2160
30338	216
33417	2376

SHANNON WAY
 E.L. TARA TO E.L. VICKRIDGE 2ND ADDN.
26'-2'-30' A.C.
 CITY OF WICHITA, KANSAS
 B. E. SMITH CITY ENGINEER
 DATE: APRIL 1962 PROJ. NO. CH-55



CURVE DATA
 Radius on N. 12° 7' 43" D = 36° 00'
 Length = 468.10' Min. def. = 11° 2' 30" 22"

Sta	Arc	N. E	S. W	Defl	E. Defl
0186.53					
0150	2345	2345	2347	2312	0° 54' 00"
0175	2300	2300	2323	2678	0° 57' 40"
1120					2° 25' 38"
1125					3° 21' 28"
1130					4° 22' 29"
1135					5° 27' 30"
1140					6° 32' 17"
1145					7° 37' 32"
1150					8° 35' 33"
1155					9° 33' 13"
1160					10° 30' 34"
1165					11° 28' 35"
1170					12° 26' 16"
1175					13° 23' 37"
1180					14° 21' 37"
1185					15° 19' 18"
1190					16° 16' 39"
1195	2500	2500	2523	2678	0° 57' 40"
1200	1963	1963	1983	2025	0° 25' 20"

CURVE DATA
 Radius on N. 12° 7' 43" D = 36° 00'
 Length = 1074.39' Min. def. = 11° 04' 23"

Sta	Arc	N. E	S. W	Defl	E. Defl
0139.06					
0150	1154	1154	1145	1114	0° 12' 44"
0175	2500	2499	2487	2413	0° 27' 36.25"
1120					1° 07' 57"
1125					1° 35' 34"
1130					2° 03' 10"
1135					2° 30' 46"
1140					2° 58' 23"
1145					3° 25' 39"
1150	2500	2499	2487	2413	0° 27' 36.25"
0163.02	1305	1302	1295	1260	0° 14' 24.6"

NOTE:
 Paving contractor shall construct wooden barricade as per detail & specifications of traffic engineering department.

SHANNON WAY
 E.L. TARA TO E.L. VICKRIDGE 2ND ADDN.
 PROJECT C11-55