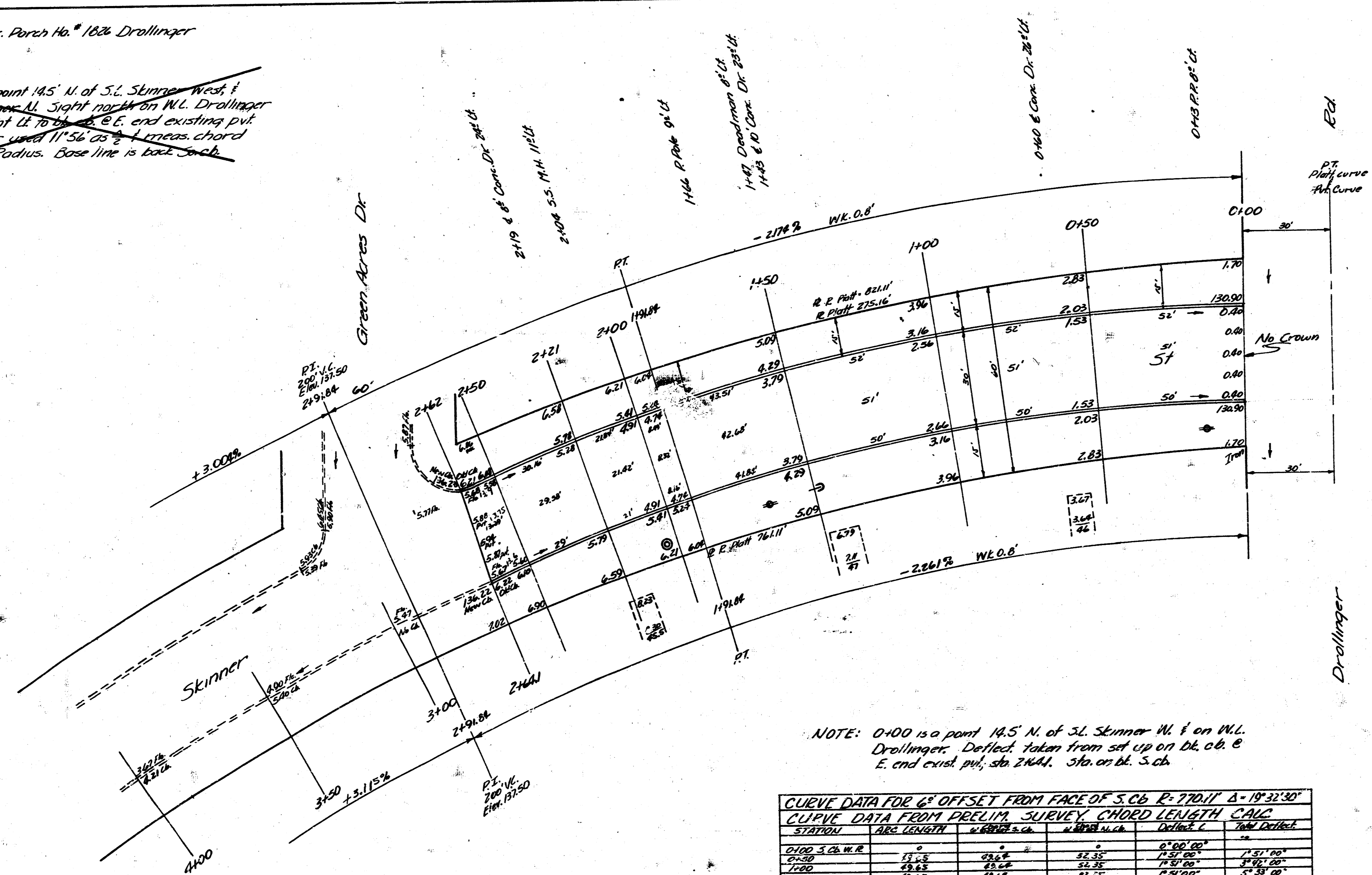
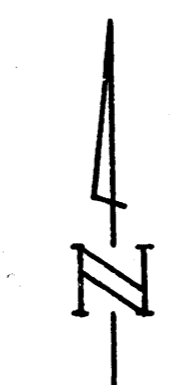


B.M. 13293 N.W. Cor. Conc. Pave. No. 1626 Drollinger

NOTE: 0+00 P.C. is a point 14.5' N. of S.L. Skinner West & on W.L. Drollinger. Sight north on W.L. Drollinger is 0°00' & sight E. to P.C. is 89°56'00" E. and existing put reads 101°56' - used 11°56' as  $\frac{1}{2}$  of angle chord to establish Radius. Base line is back-sight proposed.

EXCAVATION  
 720m  
 1530.5  
 183.0  
 1647.5 20' x 20'



NOTE: 0+00 is a point 14.5' N. of S.L. Skinner W. & on W.L. Drollinger. Deflect. taken from set up on bk. ob. & E. end exist. put, sta. 2+44. Sta. on bk. S. ch.

CURVE DATA FOR 6" OFFSET FROM FACE OF S.C.B. R=77011' Δ=19°32'30"

CURVE DATA FROM PRELIM. SURVEY CHORD LENGTH CALC.

STATION	ARC LENGTH	CHORD S. CH.	CHORD N. CH.	DEFLECT. C.	TOTAL DEFLECT.
0+00 S.C.B. W.R.	0	0	0	0°00'00"	19°32'30"
0+20	51.5	48.6	22.3	1°31'00"	3°03'30"
1+00	103.0	97.2	44.6	2°58'00"	6°01'30"
1+50	154.5	145.8	66.9	4°25'00"	8°26'30"
2+00	206.0	194.4	89.2	5°52'00"	10°51'30"
2+50	257.5	243.0	111.5	7°19'00"	13°16'30"
3+00	309.0	291.6	133.8	8°46'00"	15°41'30"
3+20	330.0	312.6	145.8	9°10'00"	16°32'30"
3+40	351.0	333.6	157.8	9°34'00"	17°23'30"
3+60	372.0	354.6	169.8	9°58'00"	18°14'30"
3+80	393.0	375.6	181.8	10°22'00"	19°05'30"
4+00	414.0	396.6	193.8	10°46'00"	19°56'30"

SKINNER ST.  
 W.L. GREEN ACRES-W.L. DROLLINGER  
 30' CONC. & C.B.  
 CITY OF WICHITA, KANS.  
 B.E. SMITH CITY ENGINEER  
 FEB. 1953 PROJ. NO. C12-280

Survey by  
 Plan & Sec.  
 Checked by