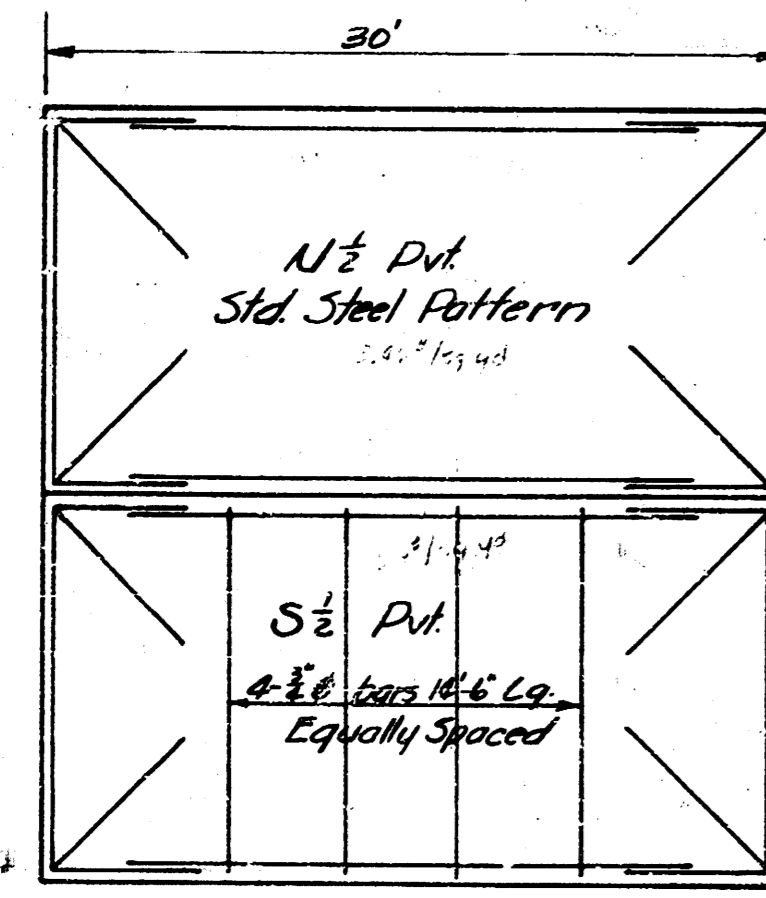
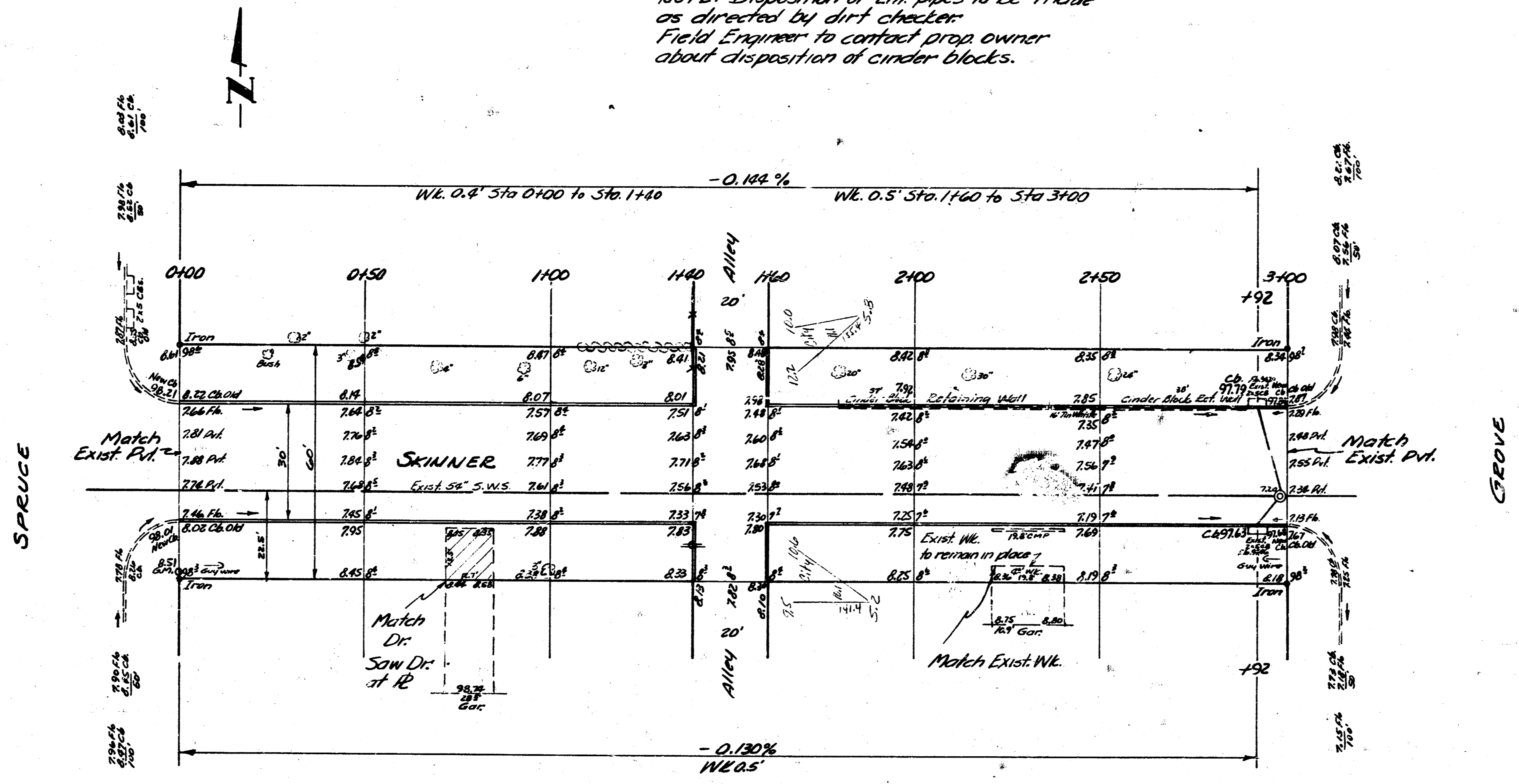


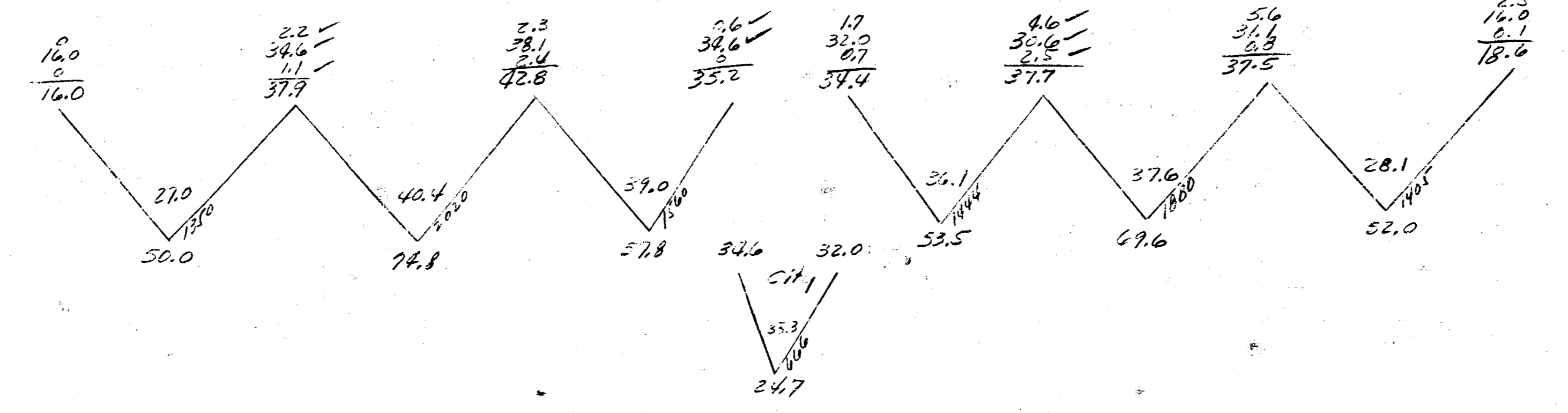
B.M. 99.33 6' in Globe So. end of W. Ch. Spruce N.R. Funston

NOTE: Disposition of End pipes to be made as directed by dirt checker. Field Engineer to contact prop owner about disposition of cinder blocks.

EXIST.  
 11.10 357.7  
 75.11 373.5  
 2.11  
 55.7  
 3.6  
 76.1 37.3



Steel Pattern  
No Scale



SKINNER  
 E.L. SPRUCE TO W.L. GROVE  
 30' CONC. & CO.  
 CITY OF WICHITA, KANSAS  
 B.E. SMITH CITY ENGINEER  
 Oct. 1935 PROJ. No. C15-198