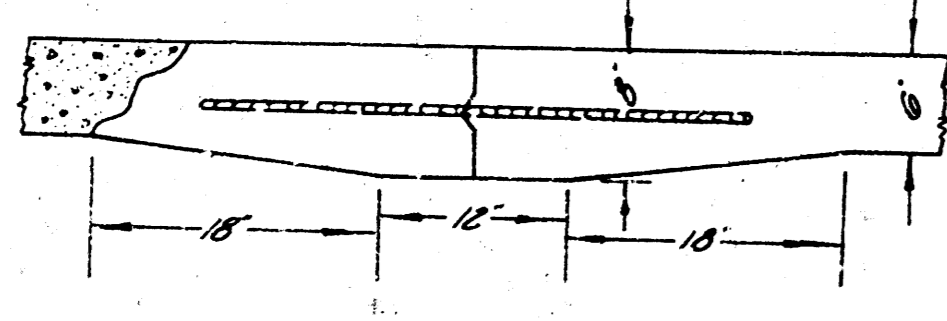
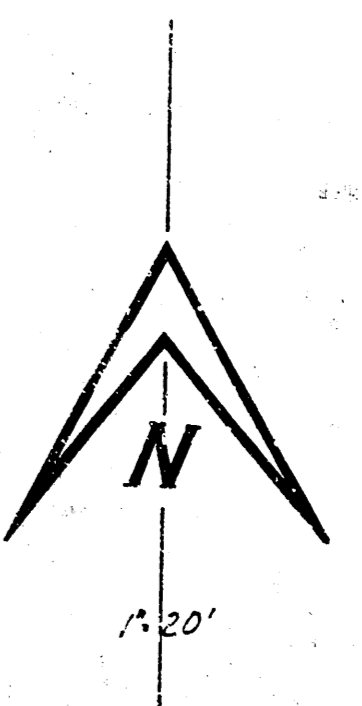
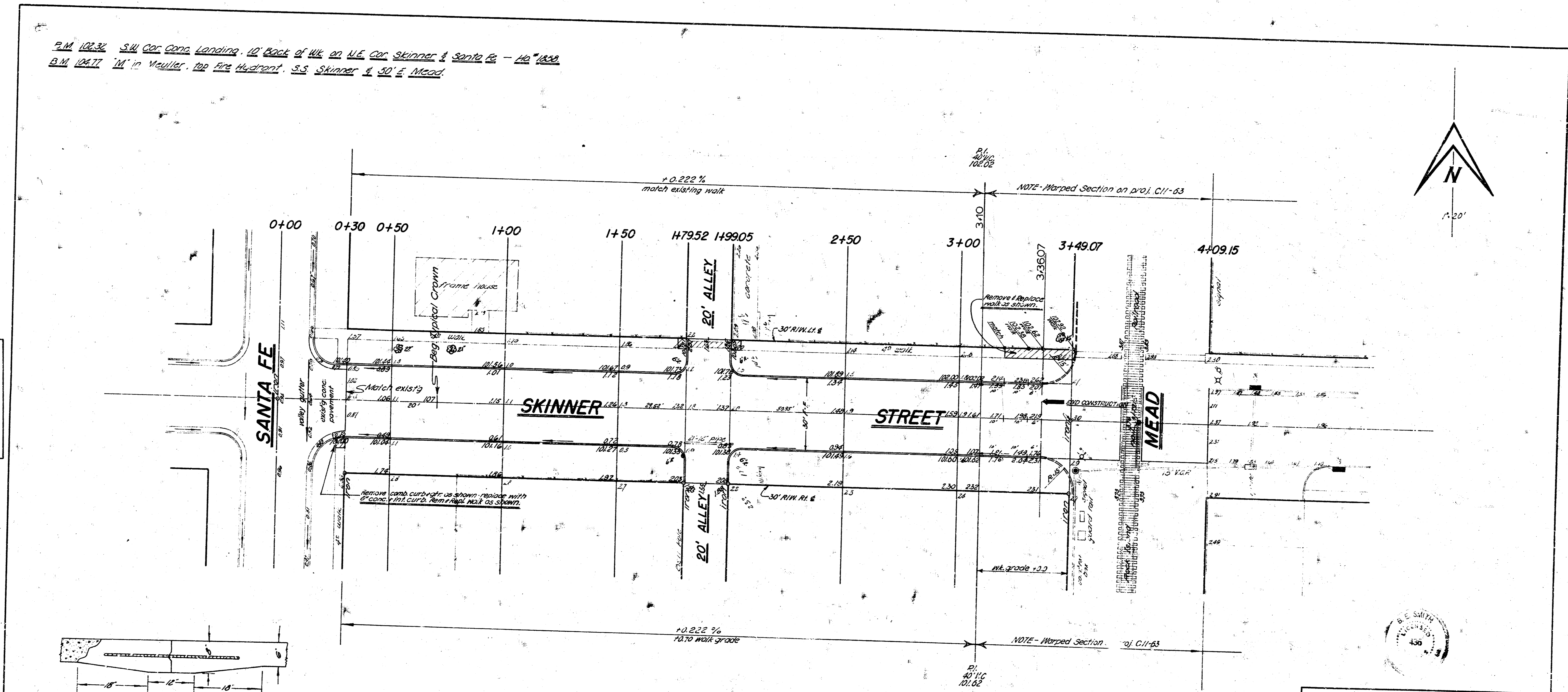


P.M. 102.32 S.W. Cor. Conc. Landing, 10' Back of W.L. on N.E. Cor. Skinner & Santa Fe - 10' 1000
 B.M. 104.77 "M" in Mueller, top Fire Hydrant, S.S. Skinner & 30' E. Mead.

1/16" = 30'
 J.J. SARG



Use #4 bars, 3' long on 2'-6" ctr.
 DETAIL OF MASTIC JOINT



EARTHWORK	
(excavation)	
PROP.	CITY
387.3	41.6
347.10%	4.2 +10%
388.0 CY.	45.9 CY.

SKINNER
 E.L. SANTA FE TO W.L. MEAD
30' CONC. & CB.
 CITY OF WICHITA, KANSAS
 B. E. SMITH CITY ENGINEER
 DATE: JUNE 1962 PROJ. NO. C11-67