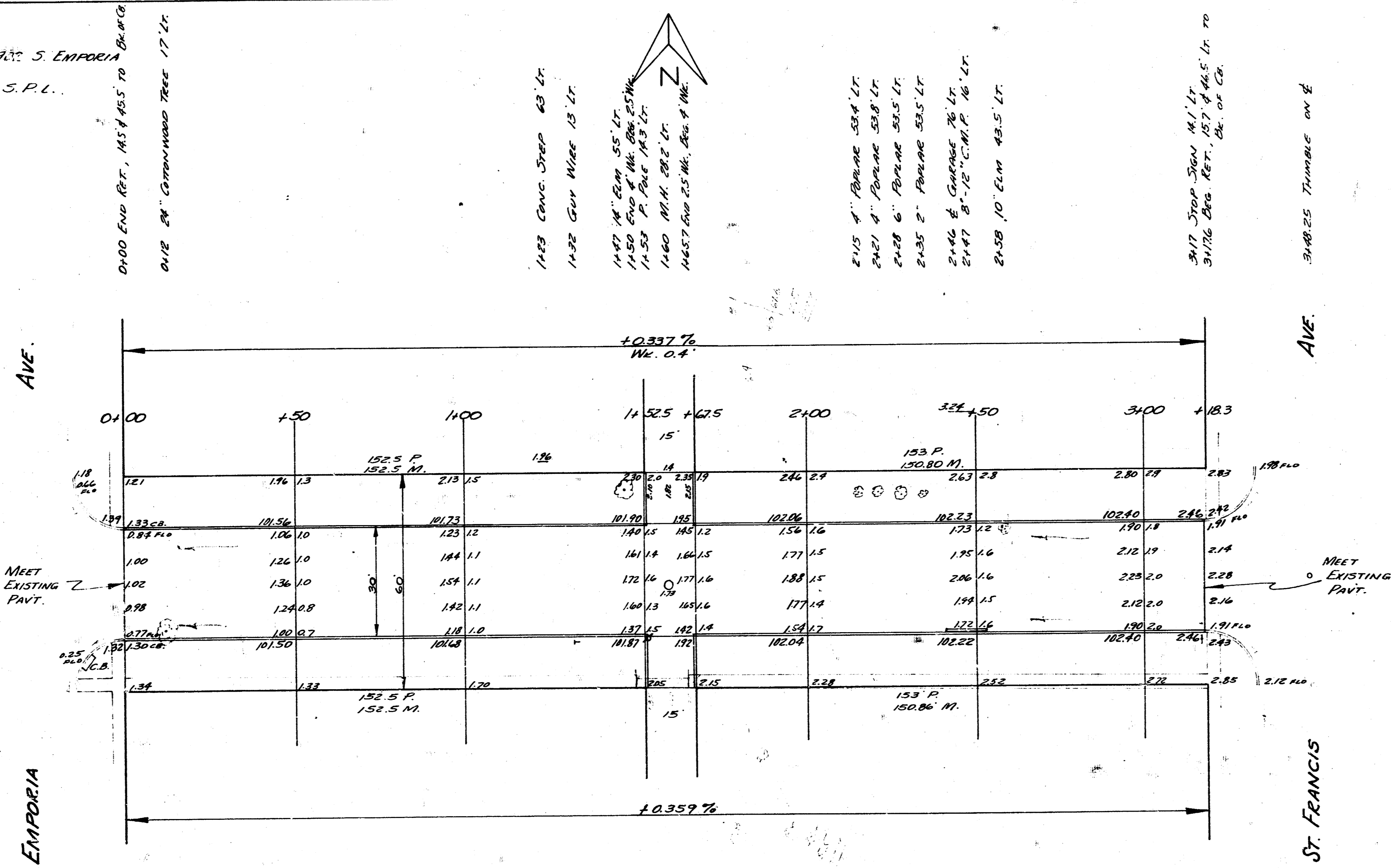


B.M. 103.55 N.W. COR. CONC. PORCH HO. 1732 S. EMPORIA
 CHAIN. E. ON S. EDGE CONC. WK. ON S.P.L.



SKINNER
 E.L. EMPORIA TO W.L. ST. FRANCIS
 30' CONC. & CB.
 JUN 1953



SKINNER
 E.L. EMPORIA TO W.L. ST. FRANCIS
 30' CONC. & CB.
 CITY OF WICHITA, KANSAS
 B.E. SMITH - CITY ENGINEER
 JUNE, 1953 PROJ. C.13-103