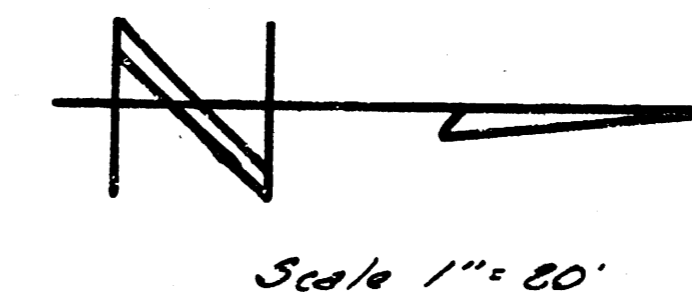
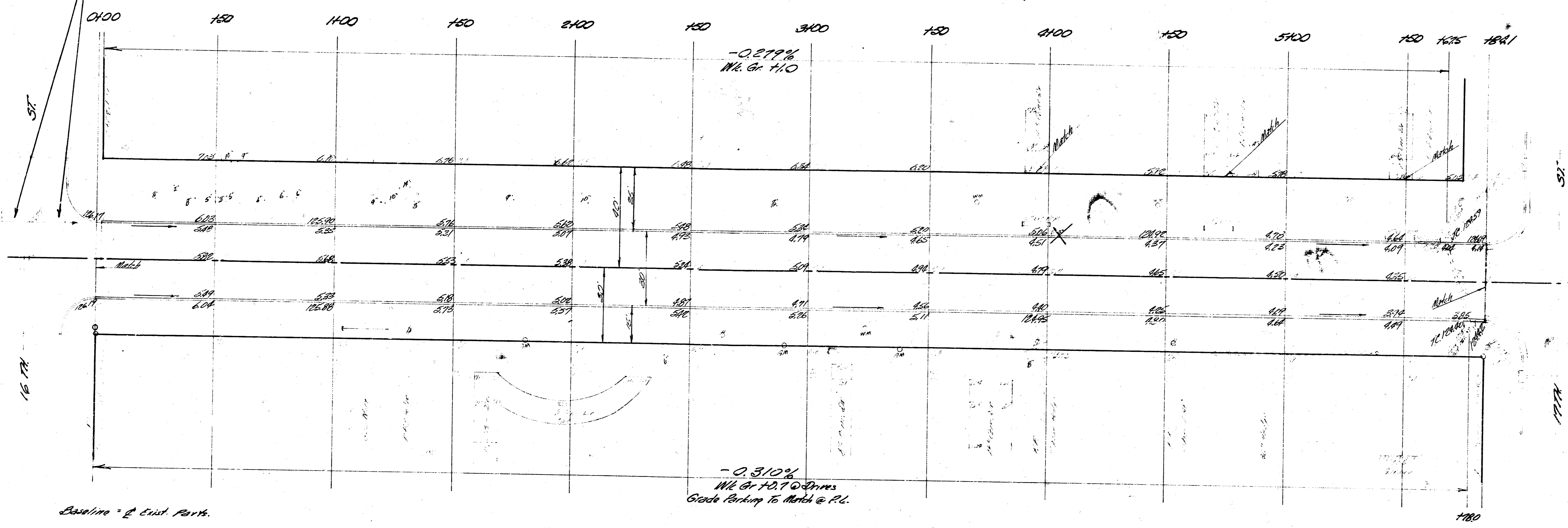


B.M. 128.22 NW Cor. Conc. Str. No. on S.E. Cor. 16th & Sheridan
 B.M. 125.15 City Sid. on S.E. Cor. 17th & Sheridan



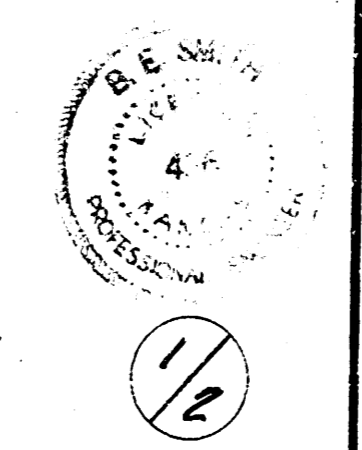
NOTE TO FIELD ENGR. & CONTRACTOR
 Determine Elev. of N.G. W.S. Sheridan @
 16th St. Grind if necessary to insure drainage North



Baseline @ East Parth.

Excavation	City
Prop	5.6 CY
1354.9 CY	0.6 + 10%
1490.4 Total CY	6.3 Total CY

Comp. Fill	Prop
1.7 CY	0.2 + 10%
1.9 Total CY	



SHERIDAN Ave
 N.L. 16th St. to
 S.L. 17th St.
 30' CONC. & CB.
 CITY OF WICHITA KANSAS
 B.E. SMITH CITY ENGINEER
 DATE JULY 1935 PROJ. No. C15-35