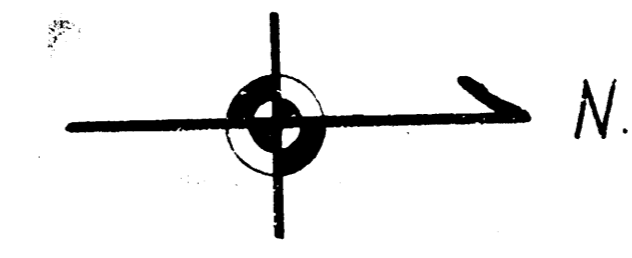
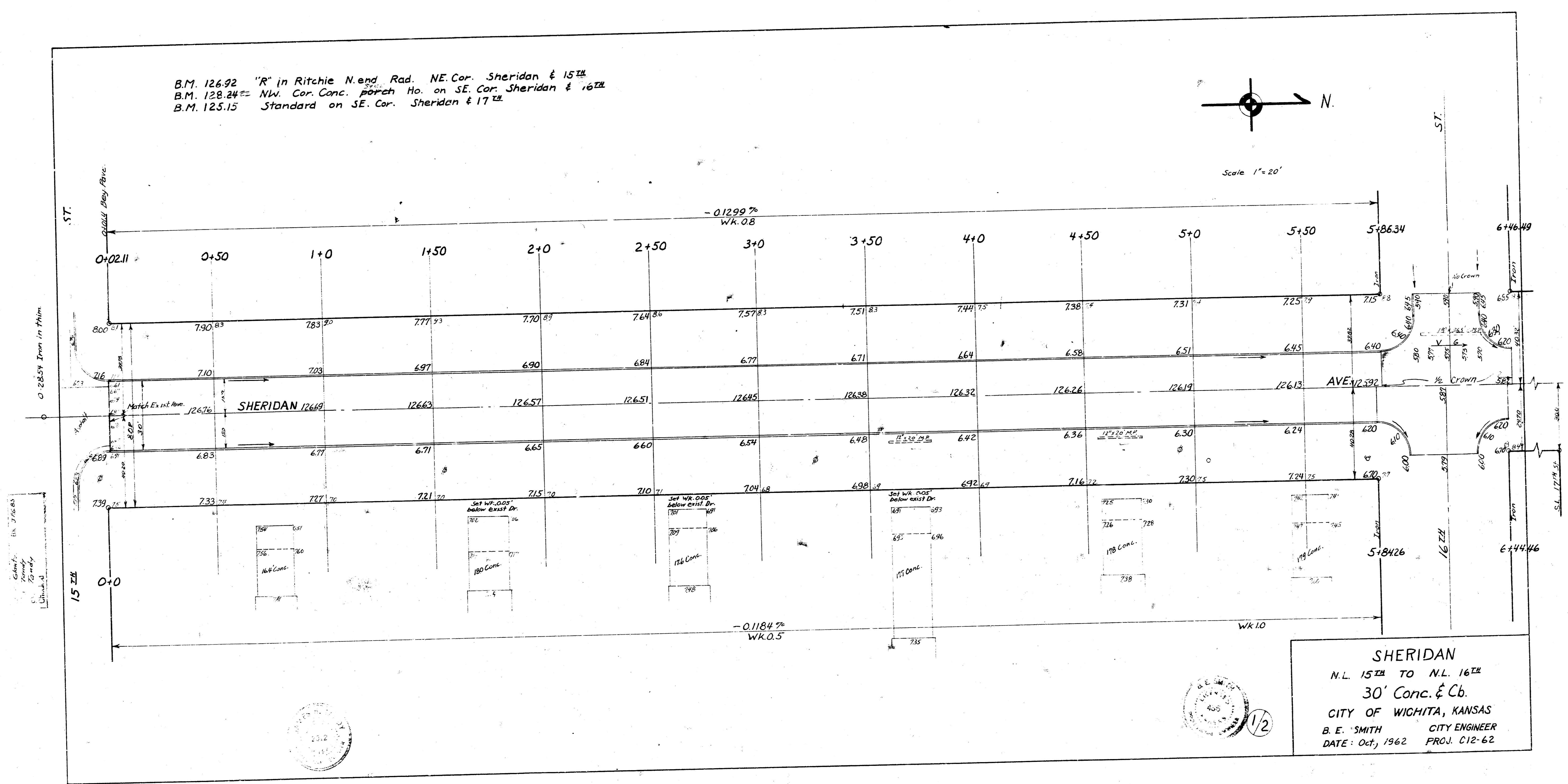


B.M. 126.92 "R" in Ritchie N. end Rad. NE. Cor. Sheridan & 15TH
 B.M. 128.24 NW. Cor. Conc. porch Ho. on SE. Cor. Sheridan & 16TH
 B.M. 125.15 Standard on SE. Cor. Sheridan & 17TH



Scale 1" = 20'



SHERIDAN
 N.L. 15TH TO N.L. 16TH
 30' Conc. & Cb.
 CITY OF WICHITA, KANSAS
 B. E. SMITH CITY ENGINEER
 DATE: Oct, 1962 PROJ. C12-62

