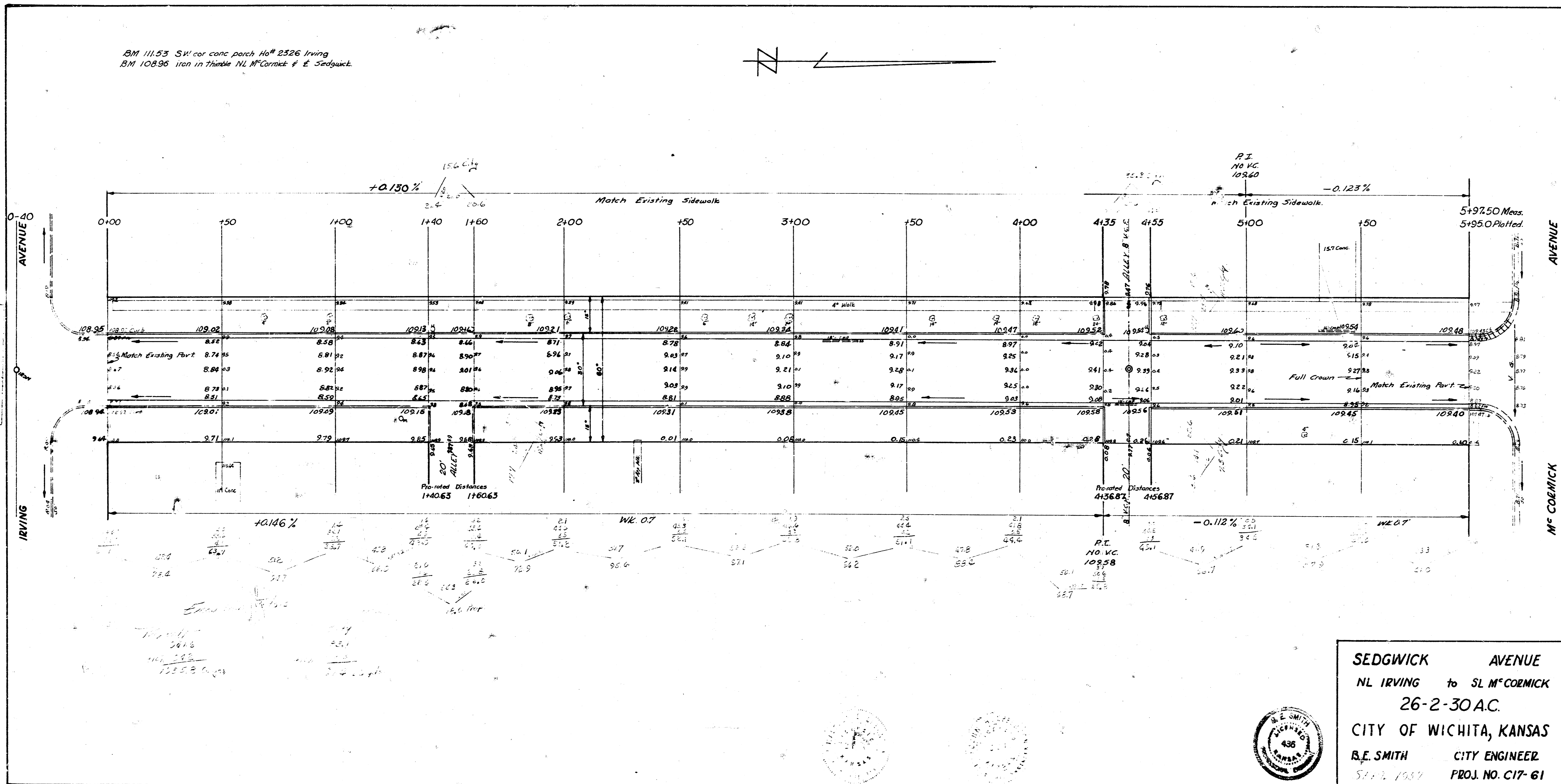
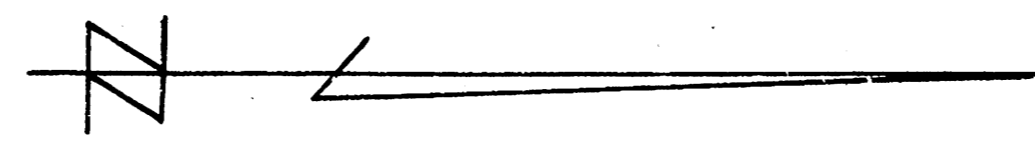


BM 111.53 SW cor conc porch No 2526 Irving
 BM 10896 iron in shade NL McCormick & E Sedgwick



SEDGWICK AVENUE
 NL IRVING to SL M^cCOBICK
 26-2-30 A.C.
 CITY OF WICHITA, KANSAS
 R.E. SMITH CITY ENGINEER
 5/17/1961 PROJ. NO. C17-61

