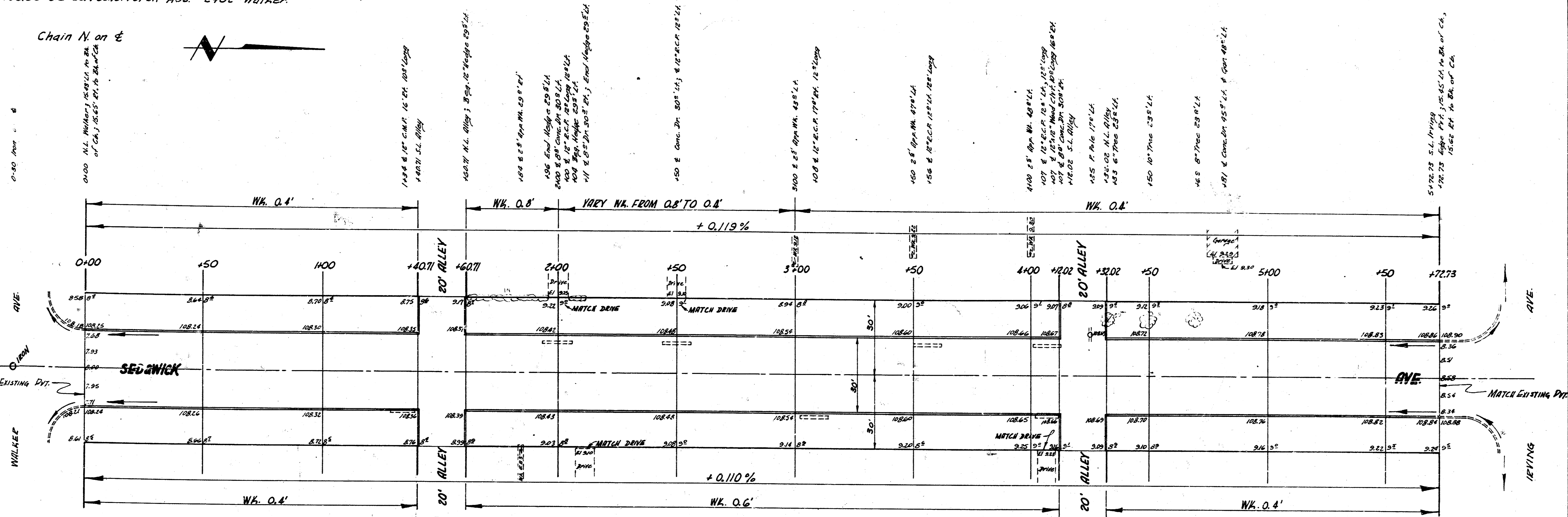


B.M. 109.95 S.E. Cor. Conc. Porch Nos. #2402 Walker.

Chain N on E



Sedgwick Ave
 N.L. Walker - S.L. Irving
 30' Conc. & CB
 City of Wichita, Kans.
 B.E. Smith
 June, 1954

TOTAL EXCAVATION	
Prop.	City
488.0 Cu.Ys.	75.0 Cu.Ys.
-10% 439.2 Cu.Ys.	-10% 67.5 Cu.Ys.
527.2 Cu.Ys.	75.0 Cu.Ys.



SEDGWICK AVE.
 N.L. WALKER - S.L. IRVING.
 30' CONC. & CB.
 CITY OF WICHITA, KANS.
 B.E. SMITH CITY ENGINEER
 JUNE, 1954 PROJ. NO. C14-109

