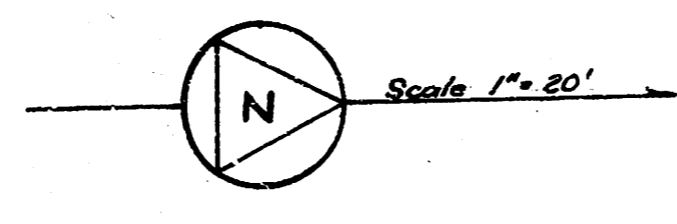
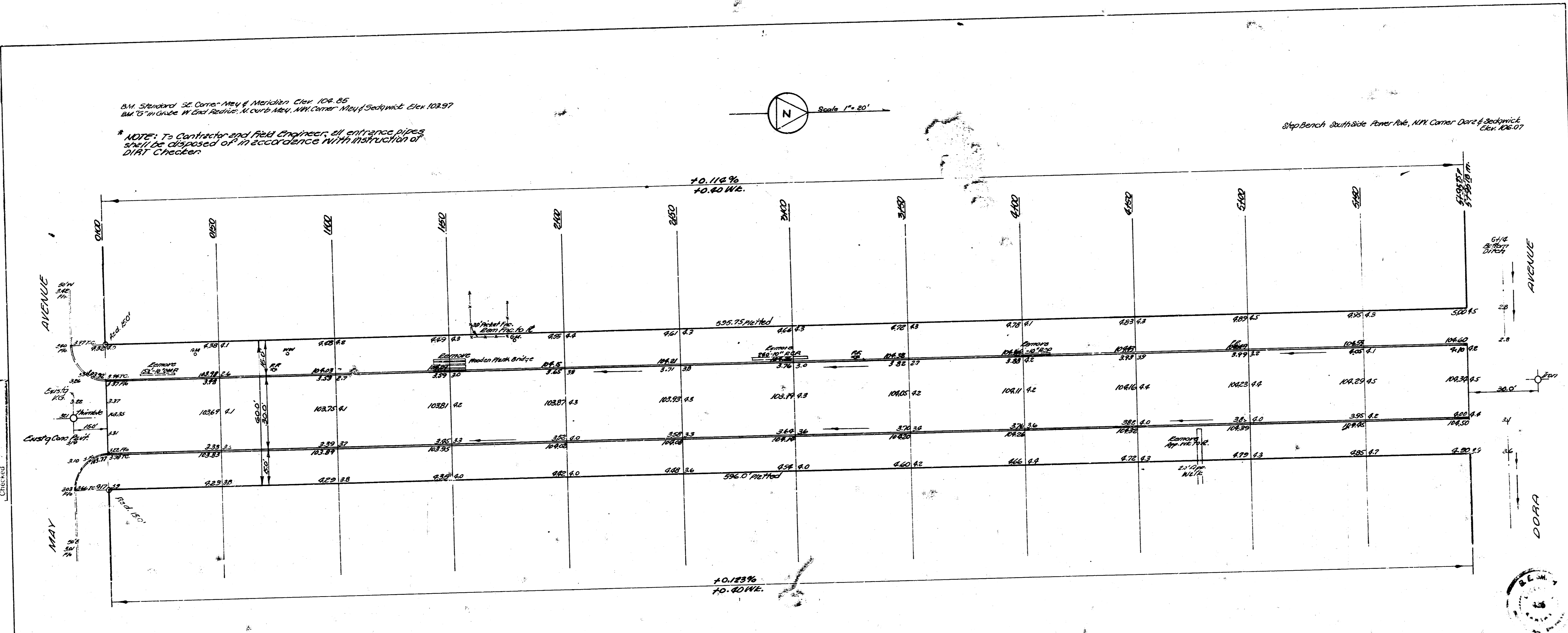


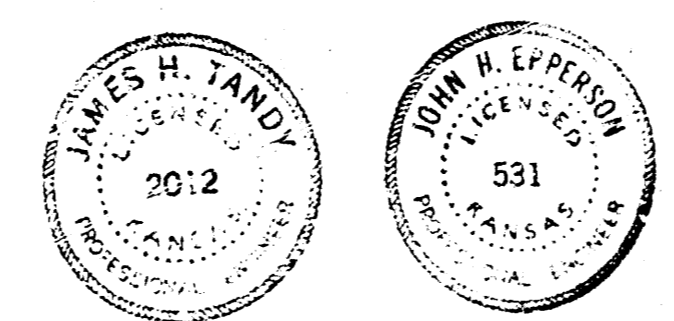
BM Standard 32 Corner May & Meridian Elev. 102.85  
 BM 15 in grade N. of Dora Elev. 101.00  
 \*NOTE: To Contractor and Field Engineer, all entrance pipes  
 shall be disposed of in accordance with instruction of  
 DIRT Checker



Step Bench Southside Power Pole, NW Corner Dora & Sedgwick  
 Elev. 106.07



Jimmy J. Araco  
 P.E.  
 3030 S. 10th St.  
 Wichita, Kan. 67202  
 Checked



EXCAVATION	CITY	FILL	PROPERTY
381.3	—	8.8	—
+10% 38.1	—	+10% 0.9	—
419.4 C.Y.	—	9.7 C.Y.	—

Sheet 1 of 2

**SEDGWICK AVENUE**  
 N.L. MAY to S.L. DORA  
 30' Conc. & Cb.  
 CITY OF WICHITA, KANSAS  
 B.E. SMITH City Engineer  
 Date: JUNE 1958 Proj. No. C17-126