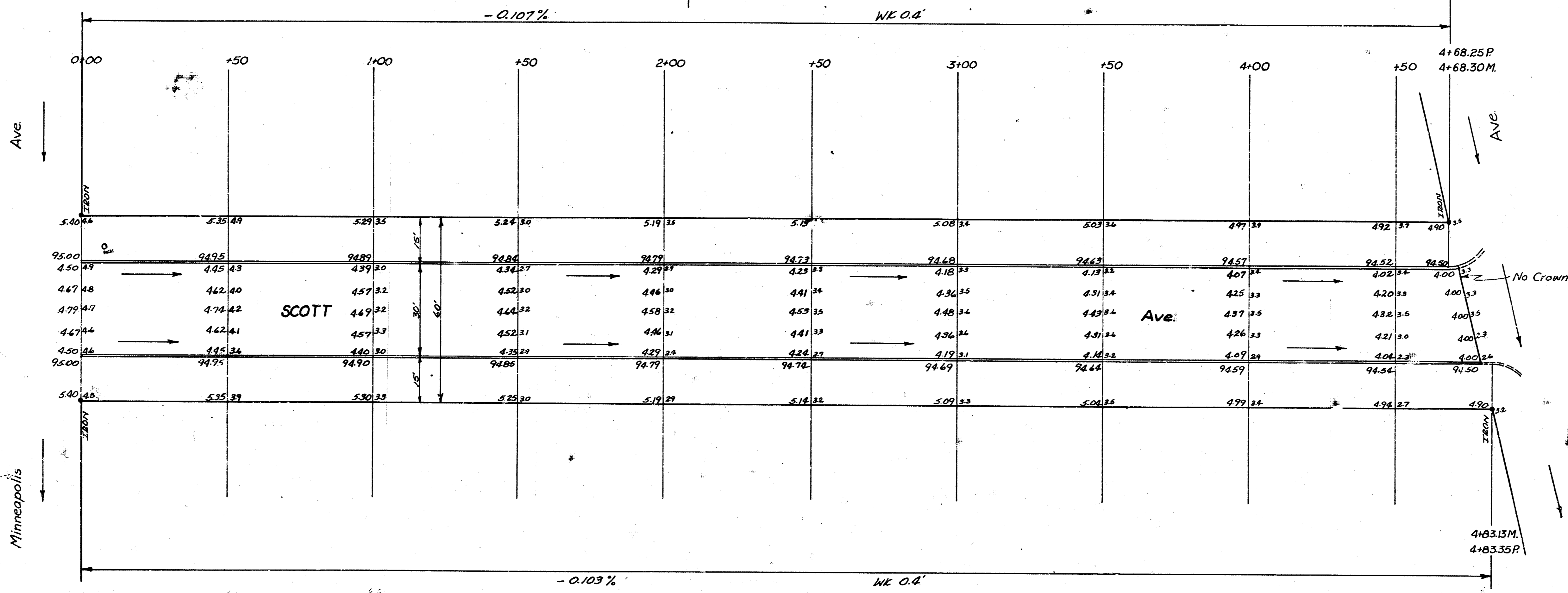


B.M. - 98.67' on headwall 30' S of N. Jennings Adn. f EL. K.15.
 B.M. - 97.64' in Mueller Fire Plug NE cor. Minneapolis f Scott.



Survey, Plans, Etc.
 Phil Greene
 Est. Engineer
 Chas. McGee

3391 10.400 = 1000 Pcs Sand.
 191
 33861

SCOTT AVE.
 EL. Minneapolis WL. Minnesota
 30' Conc. f Cb.
 CITY OF WICHITA, KANSAS
 B.E. SMITH CITY ENGINEER
 MARCH 1956 PROJ. NO. C15-65

