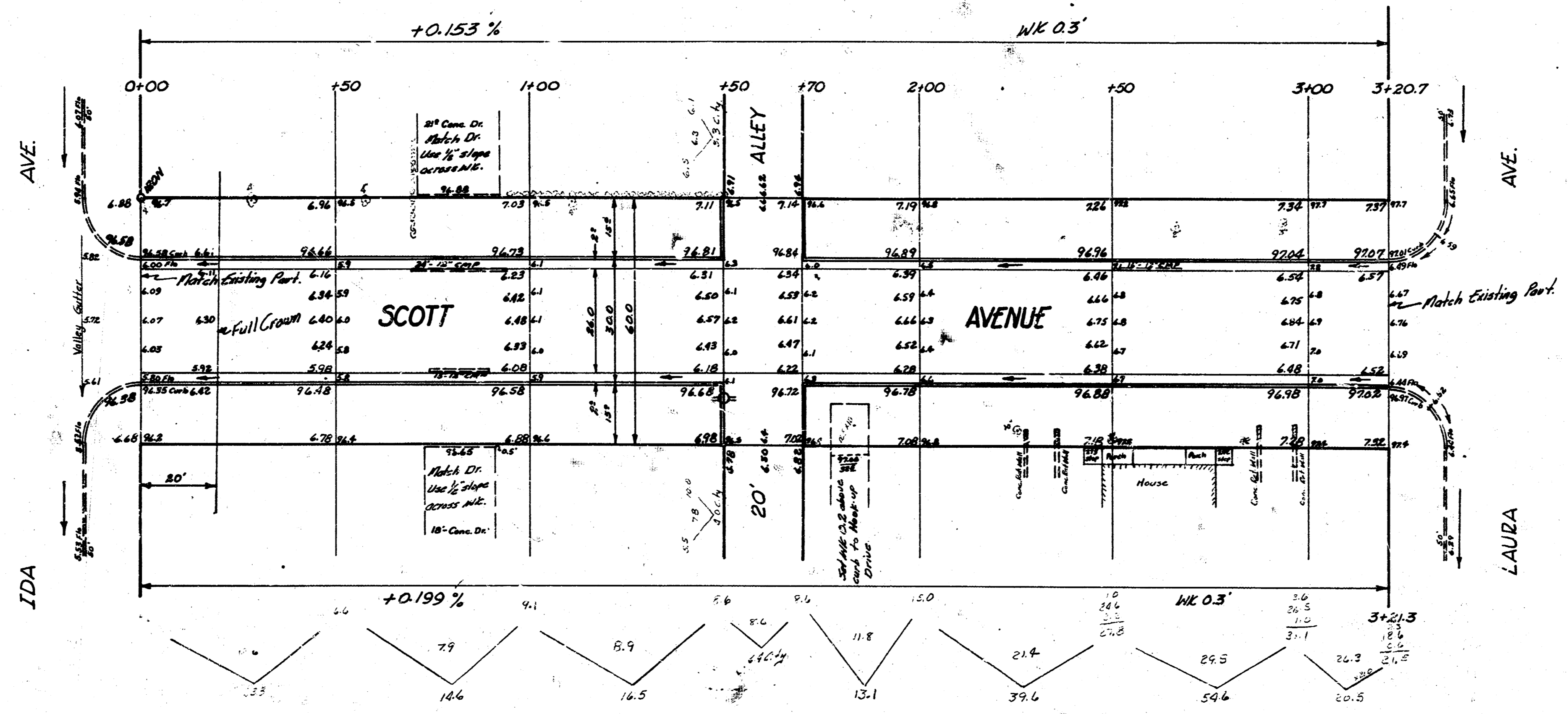


BM 96.93 spike NS RP SE cor. Scott & Ida.
 BM 100.63 "T" in Tray Fire Hydrant NW cor. Ida & Pawnee.
 Stationing on Center Line.

NOTICE TO CONTRACTOR:
 All entrance pipes are to be disposed of in accordance
 with instructions of City Dirt Checker.



City
 187
 MAR 18
 151 C. 166
 200.9 20.46

SCOTT AVENUE
 EL. IDA to WL LAURA
 26'-2'-30" AC
 CITY OF WICHITA, KANSAS
 B.E. SMITH CITY ENGINEER
 MARCH 1957 PROJ. NO. C16-166

