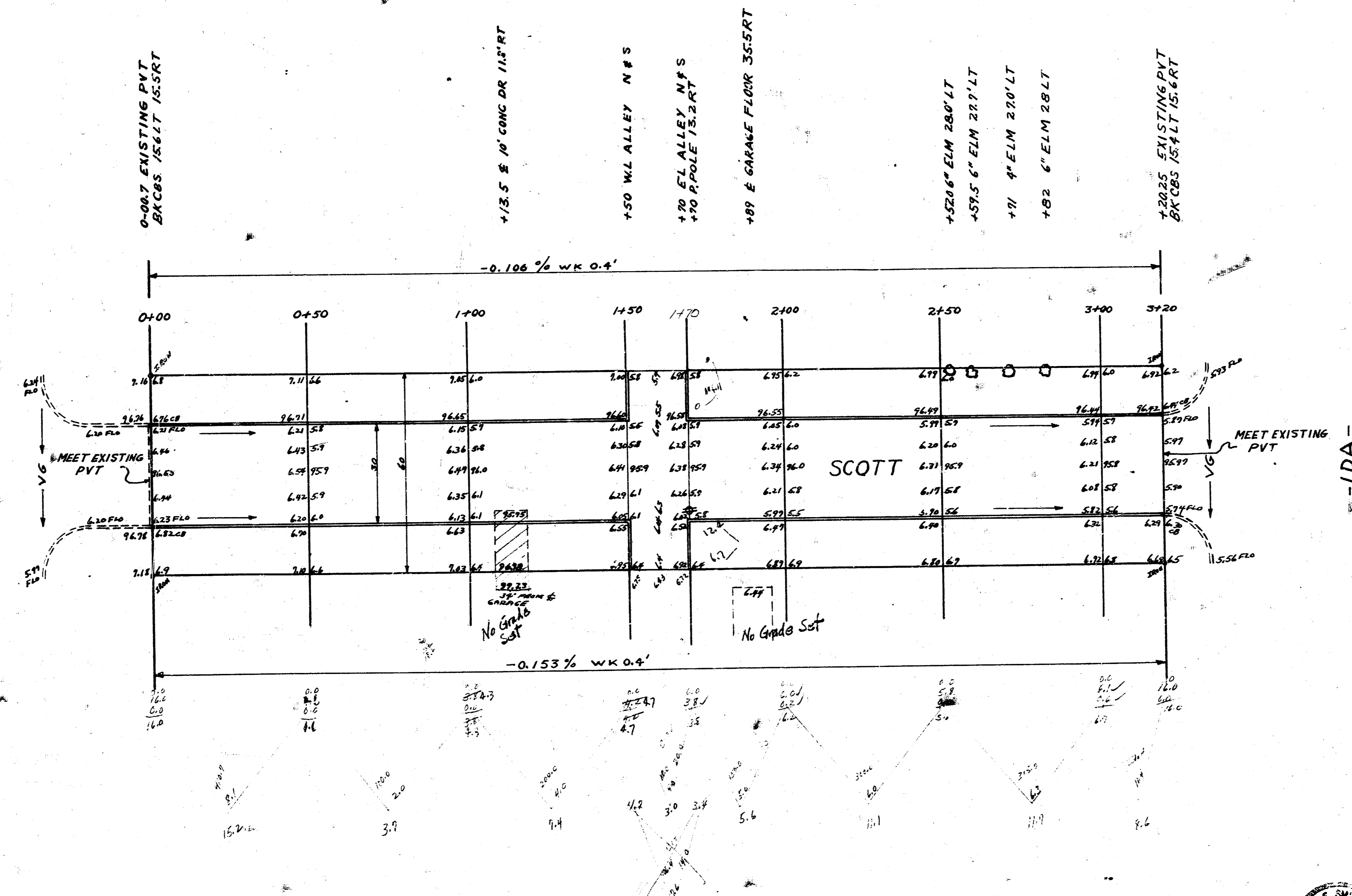


B.M. 98.77 NW CORNER PORCH HOUSE NO. 2508 IDA
STATIONING ON E

SURVEY SEAL
PIN SEAMAN
E.C. SEAMAN
LICENSED S.Y.

- WASHINGTON -



SCOTT
EL. WASHINGTON - TO WL. IDA
30' CONC & CB
CITY OF WICHITA
B.E. SMITH CITY ENGINEER
FEB. 1954 PROJ. NO. C13-251



1 1 2 8