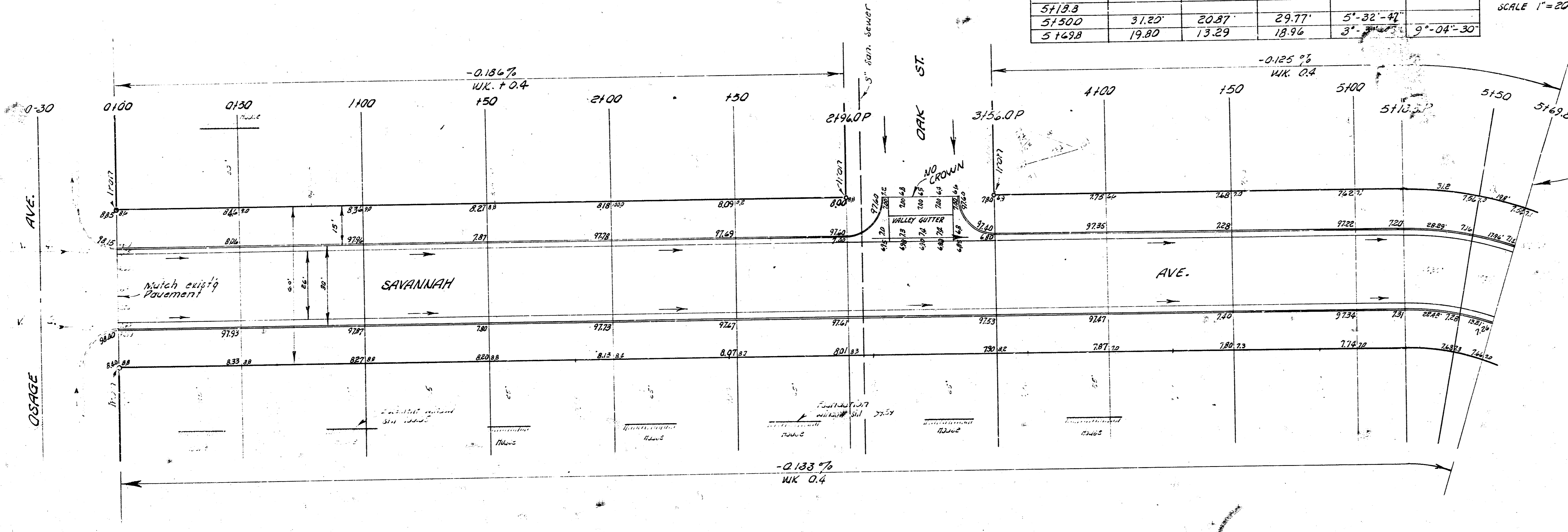
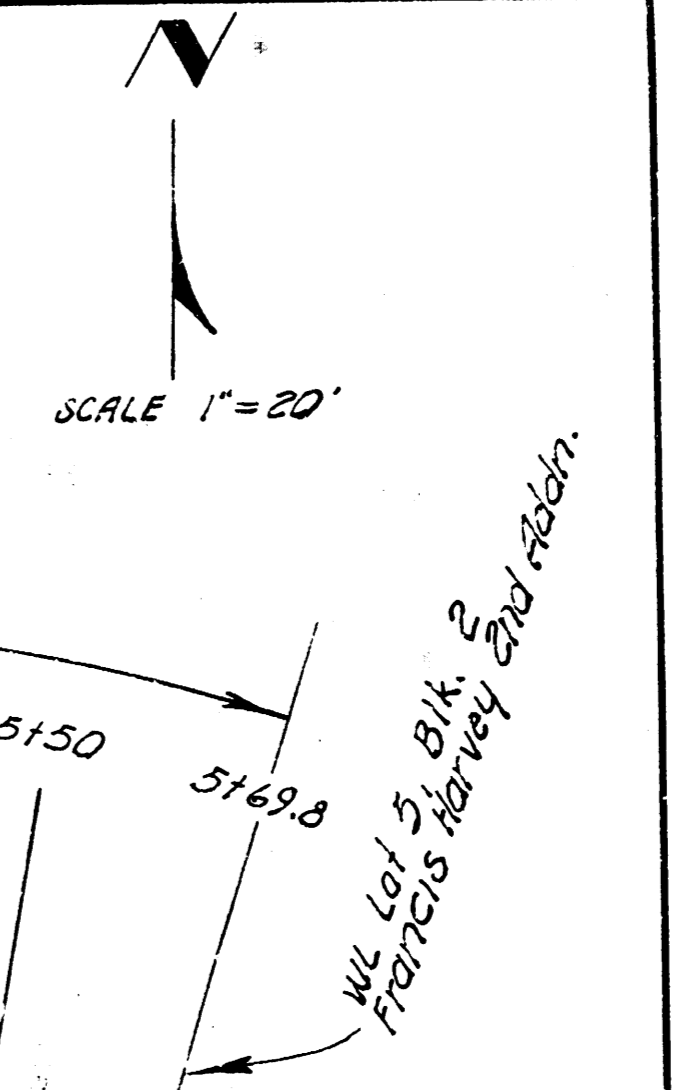


B.M. 98.10 "G" in Globe E. end N. Rad. Savannah, EL Osage.  
 B.M. 98.15 "R" in Ritchie E cb Oak, SL 25th St. so.  
 Base line =  $\pm$  to Sta 5118.8 P.C.

CURVE DATA					
STATIONING ON M. R.					
STA 5118.8 TO STA 5169.8					
$R = 161.00'$					
$\frac{1}{2} \Delta = 9^{\circ}-04'-30''$					
STATIONS	Arc length of M.R. St. $R = 161.00'$	Chord length of offset from Tang. St. C.D. $R = 108.00'$	Chord length of offset from Face M.C.D. $R = 154.00'$	Deflection	Total Deflections
5118.8					
51500	31.25'	20.87'	29.77'	$5^{\circ}-32'-42''$	
5169.8	19.80'	13.29'	18.96'	$3^{\circ}-04'-30''$	$9^{\circ}-04'-30''$



W.L. LOT 5, BLK. 2  
 FRANCIS HARVEY END ADDN.

EARTH WORK	
Excavation	
City	Prop.
79.4	138.9
7.9	138.9
87.3 Cu. Yds.	1,527.9 Cu. Yds.

**SAVANNAH AVE.**  
 EL OSAGE TO W.L. LOT 5, BLK. 2  
 FRANCIS HARVEY END ADDN.  
 26'-2"-30" A.C.  
 CITY OF WICHITA, KANSAS  
 B. E. SMITH CITY ENGINEER  
 DEC. 1958, PROJ. NO. C15-99

