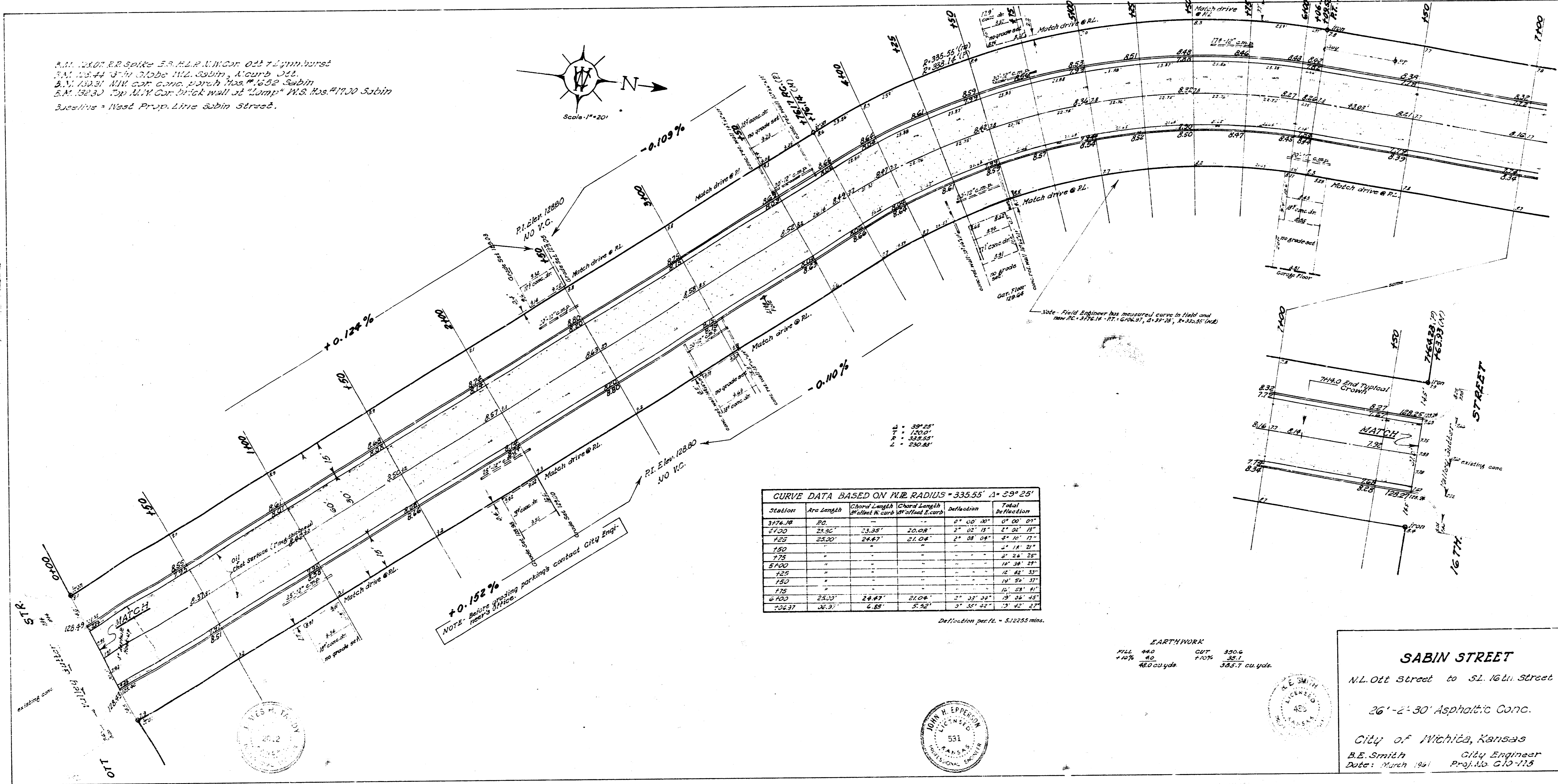
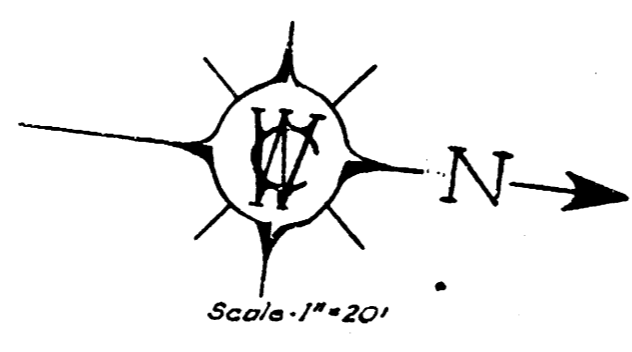


S.M. 1207 R.R. Spike E.S. M.L.R. N.W. Cor. 021 & 1/2 Wym. Road
 S.M. 1254 1/2 in. S.D. No. 112 Sabin, North 1/2
 S.M. 1231 NW cor. Conc. porch No. 112 Sabin
 S.M. 1233 Top 1/2 in. Cor. Brick wall of Comp. No. 112 Sabin
 S.M. 1230 Top 1/2 in. Cor. Brick wall of Comp. No. 112 Sabin
 S.M. 1232 Top 1/2 in. Cor. Brick wall of Comp. No. 112 Sabin



CURVE DATA BASED ON H.B. RADIUS = 335.55' $\Delta = 29^{\circ} 25'$

Station	Arc Length	Chord Length	Chord Length	Deflection	Point
		Offset to	Offset to		of
		Center	Center		Curve
3726.00	0.00	0.00	0.00	0° 00' 00"	PC
3750.00	24.36	3.35	20.08	2° 05' 15"	P1
3750.00	24.36	3.35	20.08	2° 05' 15"	P2
3775.00	48.72	6.70	40.16	4° 10' 30"	P3
3800.00	73.08	10.05	60.24	6° 15' 45"	P4
3825.00	97.44	13.40	80.32	8° 21' 00"	P5
3827.00	99.00	13.85	81.60	8° 25' 00"	PT

Deflection per ft. = 5.1225 mm.

EARTHWORK
 FILL 440 cu yds
 CUT 300 cu yds
 TOTAL 740 cu yds

SABIN STREET
 N.L. Ott Street to S.L. 16th Street
 26'-2'-30" Asphaltic Conc.
 City of Wichita, Kansas
 B.E. Smith City Engineer
 Date: March 1921 Proj. No. 213-118

Johnson: 11-54
 Sec. 21

