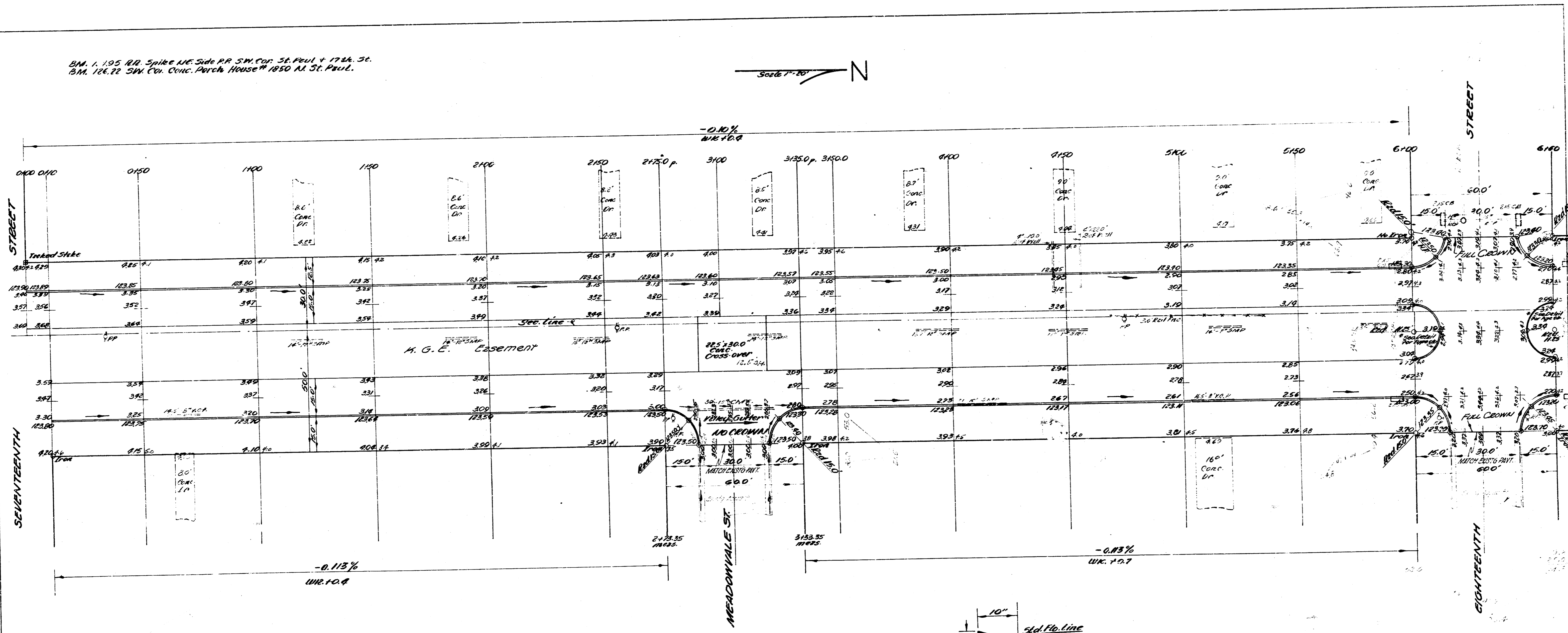
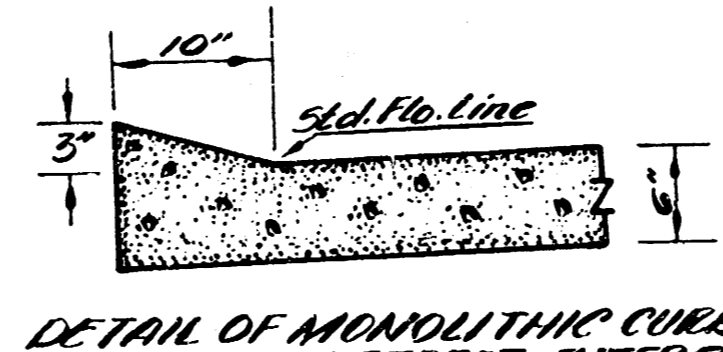


BM. 1, 195 4th Spike NE Side RR S.W. Cor. St. Paul + 17th St.  
 BM. 126.72 SW. Cor. Conc. Arch. House 1950 N. St. Paul.

Scale 1" = 40'



NOTE TO FIELD ENGINEER & CONTRACTOR:  
 All entrance pipes to be disposed of in accordance with City Dept. Checkers.  
 ALL FIELD ENGINEER: ALL DIMENSIONS TO BE GIVEN 5' BELOW FINISHED GRADE.



Excavation Totals		Fill Totals	
PROP.	CUT	PROP.	CUT
729.9	256.0	3.6	0.7
73.0	23.5	107% C.Y.	11% C.Y.
802.9 C.Y.	279.5 C.Y.	7.0 C.Y.	0.8 C.Y.

ST. PAUL AVENUE  
 N. 17TH ST. - N. 18TH ST.  
 15.0' CONC. & CB.  
 ON EACH SIDE M.G.E. ESM'T  
 CITY OF WICHITA, KANSAS  
 B.E. SMITH CITY ENGINEER  
 DATE MAY 1958 PROJ. NO. CIT-70



Sheet 1 of 2