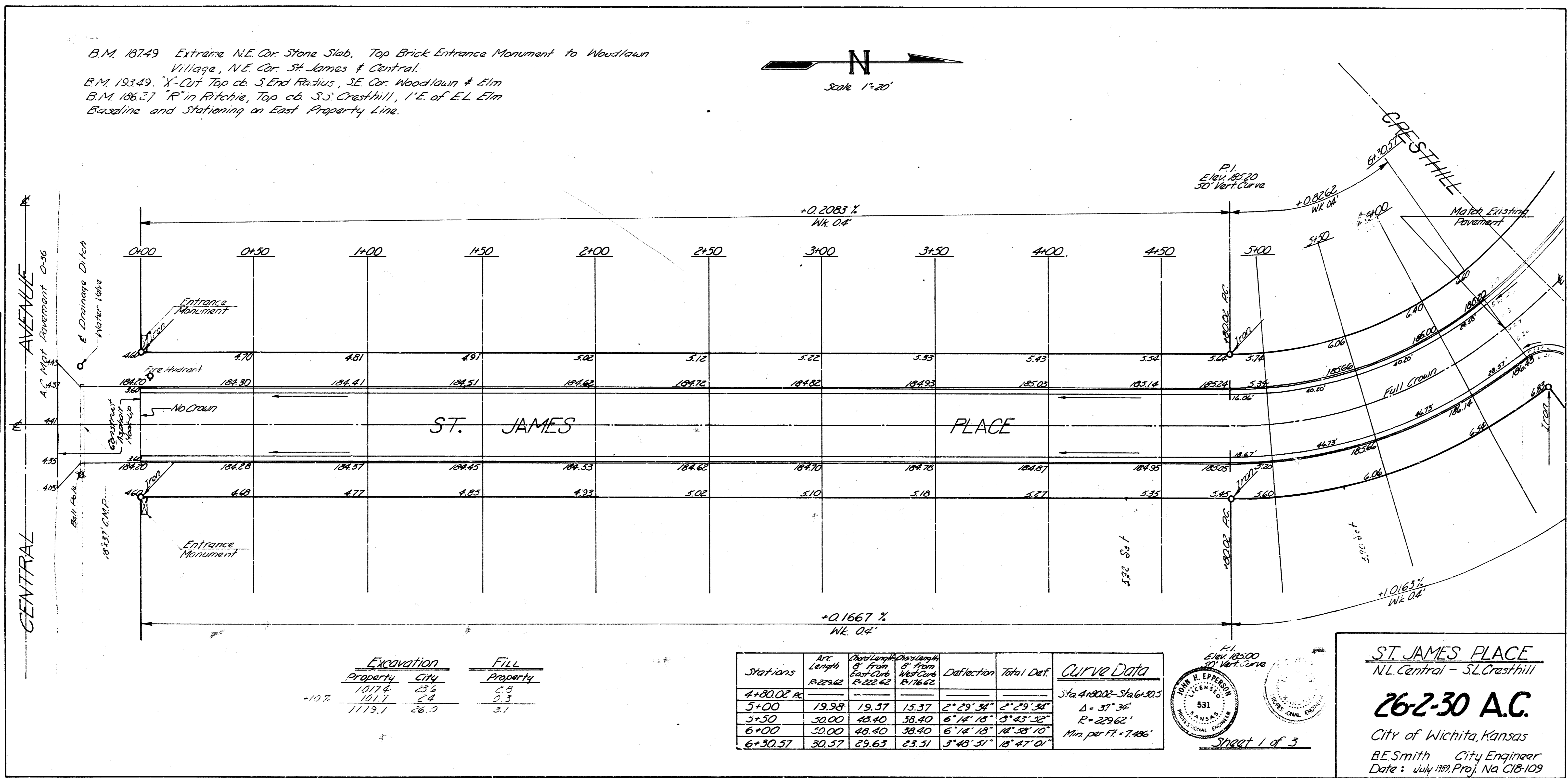
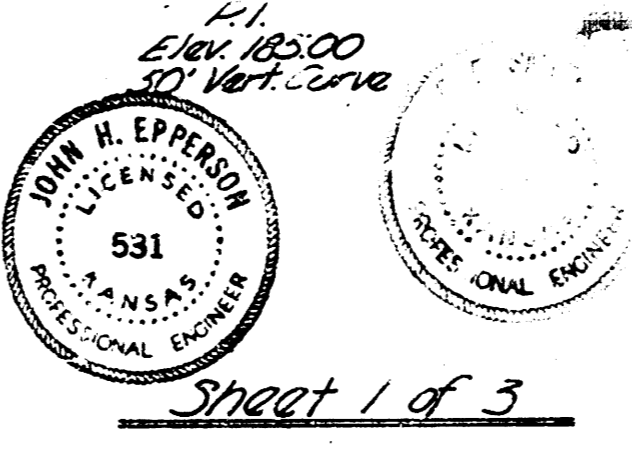


B.M. 18749 Extrava N.E. Cor Stone Slab, Top Brick Entrance Monument to Woodlawn Village, N.E. Cor. St. James & Central.  
 B.M. 19349 "X-Cut" Top of S End Radius, S.E. Cor. Woodlawn & Elm  
 B.M. 18637 "R" in Ritchie, Top of S.S. Cresthill, I.E. of E.L. Elm Baseline and Stationing on East Property Line.



Excavation		Fill	
Property	City	Property	City
+10%	1077.6	23%	2.2
	121.7	2.4	2.3
	1179.1	26.0	3.1

Stations	Arc Length	Dist. from East Curve	Dist. from West Curve	Deflection	Total Def.	Curve Data
4+80.02 to 5+00	19.98	19.37	15.37	2° 29' 34"	2° 29' 34"	Sta 4+80.02 - Sta 6+30.57 Δ = 51° 36" R = 229.62' Min. per FT = 7.496'
5+00 to 5+50	50.00	43.40	38.40	6° 14' 18"	8° 43' 52"	
5+50 to 6+00	50.00	43.40	38.40	6° 14' 18"	14° 58' 10"	
6+00 to 6+30.57	30.57	29.63	23.51	3° 48' 51"	18° 47' 04"	



**ST. JAMES PLACE**  
 N.L. Central - S.L. Cresthill  
**26-2-30 A.C.**  
 City of Wichita, Kansas  
 B.E. Smith City Engineer  
 Date: July 1939, Proj. No. C18-109