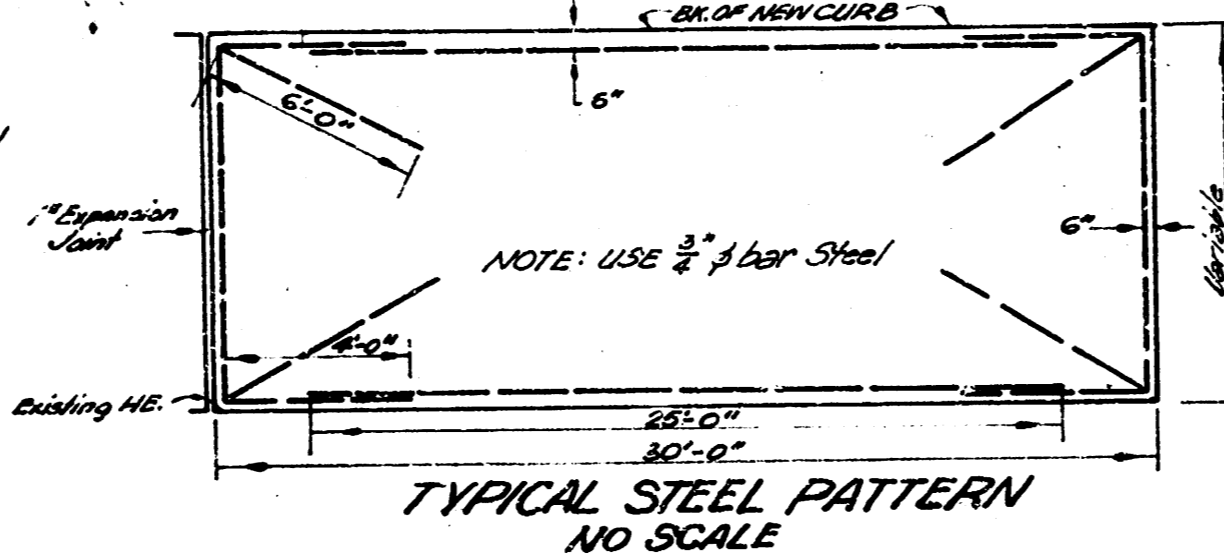
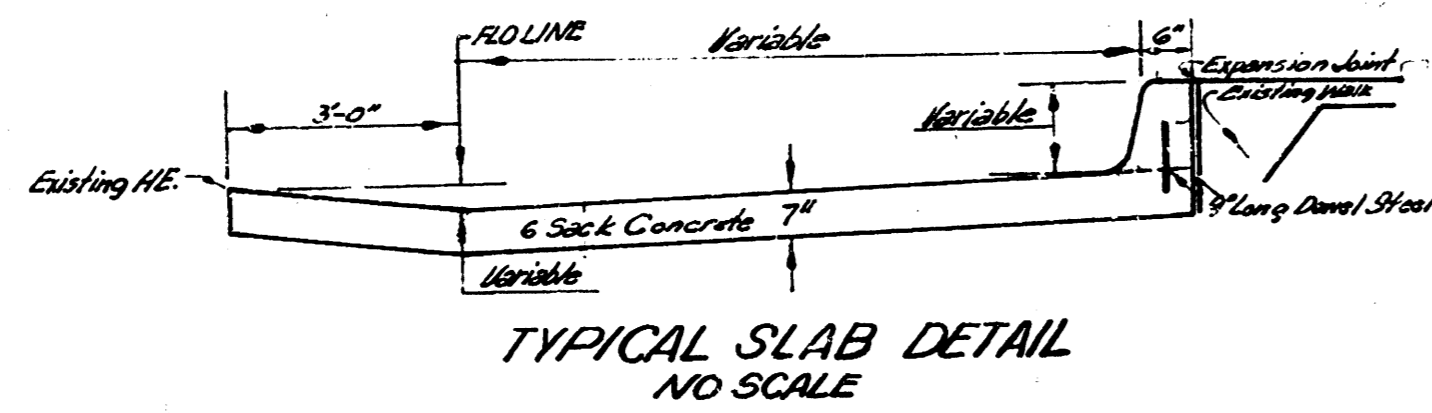
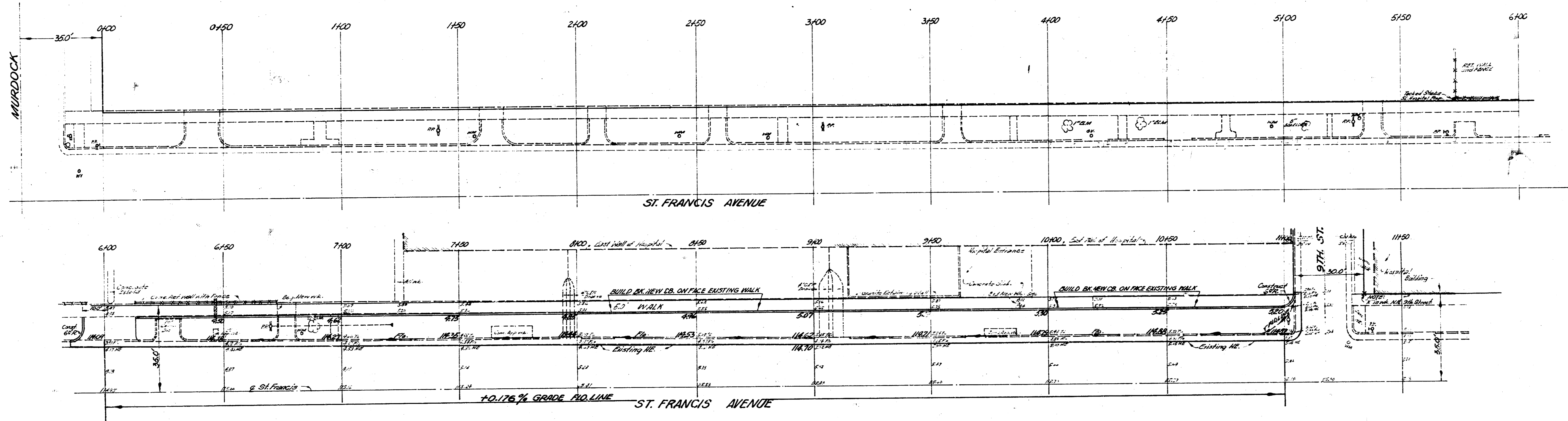


311 117.72 NW COR. OF BASE R.R. SIG. POST SE. COR. 9TH + SANTA FE
 T.P. # 116.43 NE COR. GRANITE CURB S. SIDE of HOSPITALS E. DOOR

Scale 1" = 20'

NOTE TO CONTRACTOR
 This project will be constructed under the supervision of the City Engineer. The contractor shall be responsible for all construction details and for obtaining all necessary permits and approvals. The City of Wichita is not responsible for any errors or omissions in this plan and is not liable for any damages or injuries resulting therefrom.



WIDENING W.S. ST. FRANCIS
 S.L. NINTH STREET to 5150' SOUTH.
 12.5'-7" CONC. + CB.
 City of *Wichita, Kansas*
 B.E. SMITH CITY ENGINEER
 DATE: PRIVATE PROJECT