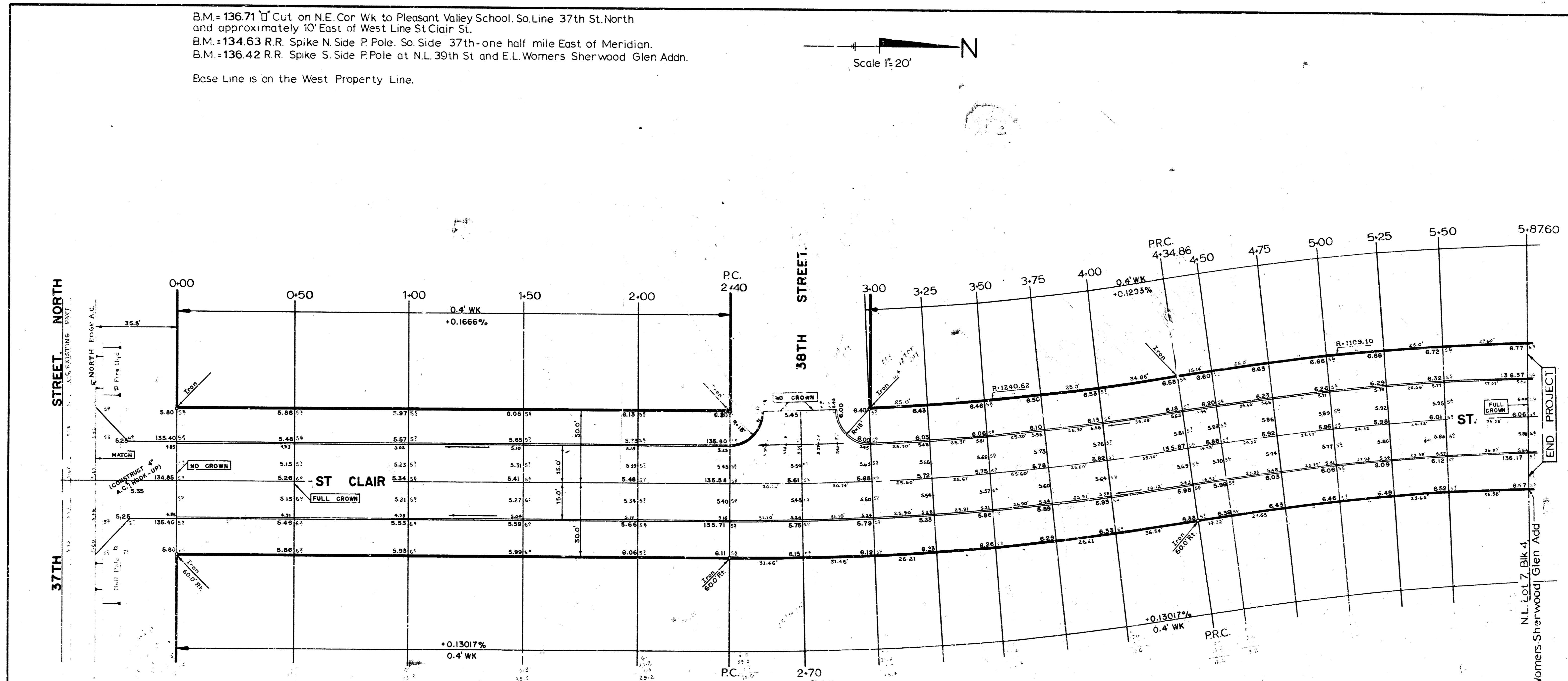
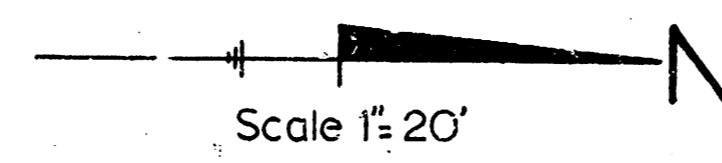


B.M. = 136.71 Cut on N.E. Cor Wk to Pleasant Valley School. So. Line 37th St. North and approximately 10' East of West Line St. Clair St.
 B.M. = 134.63 R.R. Spike N. Side P. Pole. So. Side 37th - one half mile East of Meridian.
 B.M. = 136.42 R.R. Spike S. Side P. Pole at N.L. 39th St. and E.L. Womers Sherwood Glen Addn.
 Base Line is on the West Property Line.



Survey Grade
 for Street
 Chisbol

PROPERTY EXCAVATION		CITY	
546.50	Cu Yds	100.70	Cu Yds
110%	54.70	10%	10.10
TOTAL	601.20	TOTAL	110.80

Δ: 9° 00' Rad: 1240.62' Min. Per Ft. of Arc: 01.38549

STATION	ARC	Chord B off to West Co.	Chord B off to East Co.	Deflection	Total Deflection
PC 2+40.0				0° 00' 00"	0° 00' 00"
2+70.0	30.18	30.18	31.29	0° 41' 35"	0° 41' 35"
3+00.0	30.18	30.18	31.29	0° 41' 35"	1° 23' 10"
3+25.0	25.14	25.14	26.06	0° 34' 36"	1° 57' 46"
3+50.0					2° 32' 26"
3+75.0					3° 09' 04"
4+00.0	25.14	25.14	26.06	0° 34' 36"	3° 41' 42"
PRC 4+34.86	35.06	35.06	35.34	0° 48' 18"	4° 30' 00"

Δ: 7° 55' 26" Rad: 1109.10' Min. Per Ft. of Arc: 01.54979

STATION	ARC	Chord B off to West Co.	Chord B off to East Co.	Deflection	Total Deflection
PRC 4+34.86				0° 00' 00"	0° 00' 00"
4+50.0	15.05	15.04	14.42	0° 23' 28"	0° 23' 28"
4+75.0	24.84	24.83	23.79	0° 38' 44"	1° 02' 12"
5+00.0	24.85	24.84	23.80	0° 38' 45"	1° 40' 57"
5+25.0	24.84	24.83	23.80		2° 19' 42"
5+50.0	24.84	24.83	23.80	0° 38' 45"	2° 56' 27"
RT 5+8760	37.36	37.35	35.79	0° 58' 16"	3° 56' 43"

ST CLAIR STREET.
 From N.L. 37th St. North To N.L. Lot 7,
 Block 4, Womers Sherwood Glen Add.
30' CONCRETE & CURB.
 B.E. SMITH City Engineer
 CITY OF Wichita, Kansas
 DATE: Oct. 1965 Project No. C15-60