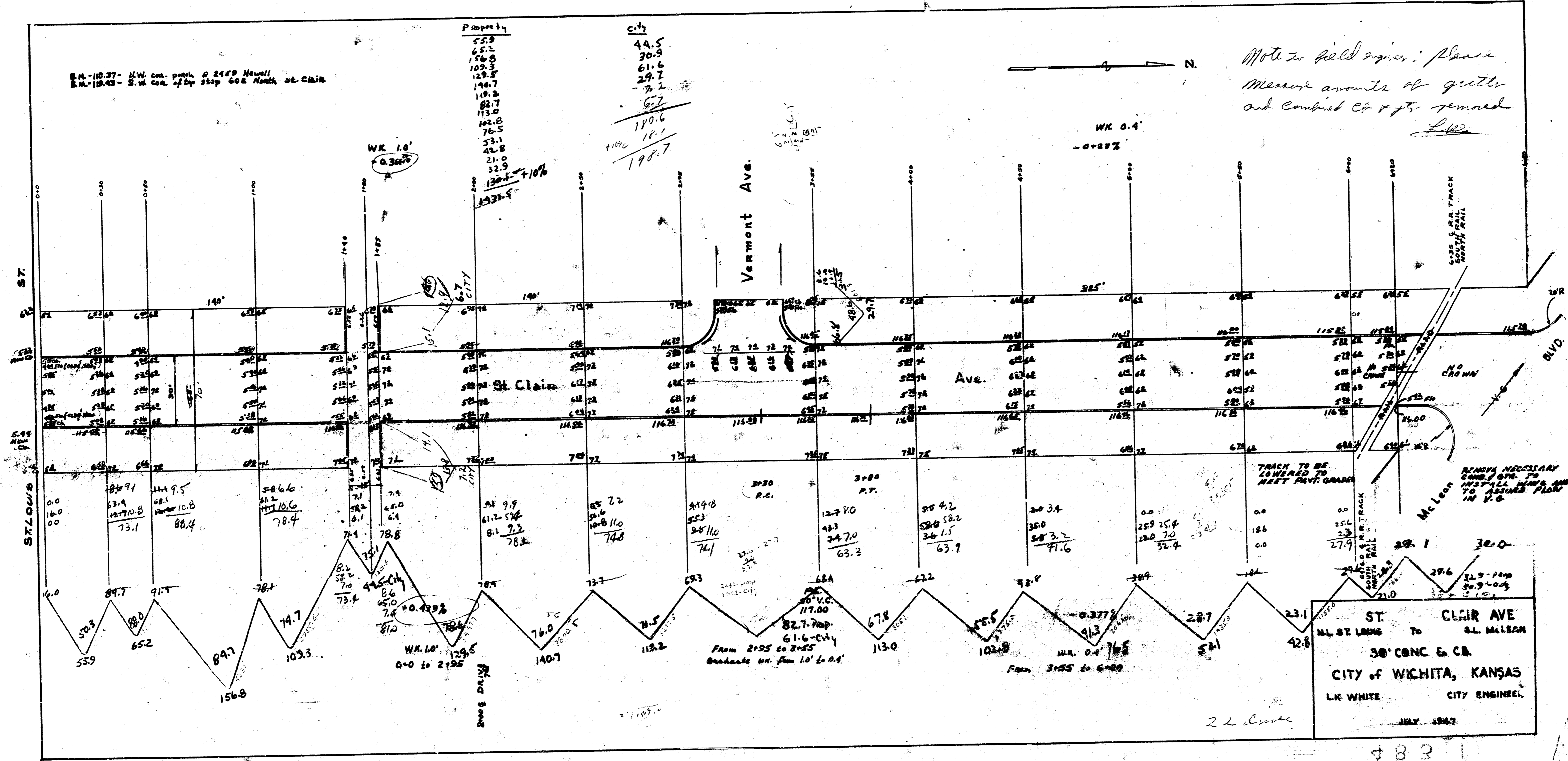


E.M.-18-37 - M.W. con. patch, @ 2450 Howell  
 E.M.-18-38 - S.W. cor. of Dep Stop 608 North St. Clair

Property	City
52.8	44.5
62.2	30.9
156.8	61.6
109.5	29.7
129.5	7.2
146.7	
146.2	
82.7	
113.0	
102.8	
76.5	
53.1	
42.8	
21.0	
32.9	
130.4	
190.6	
110.0	
17.1	
198.7	

Note to field engin.: Please  
 Measure amount of gutter  
 and Combined Ch. & pte removed  
*L.H.*



ST. CLAIR AVE.  
 30' CONC. & CO.  
 CITY OF WICHITA, KANSAS  
 L.H. WHITE CITY ENGINEER.  
 JULY 1947