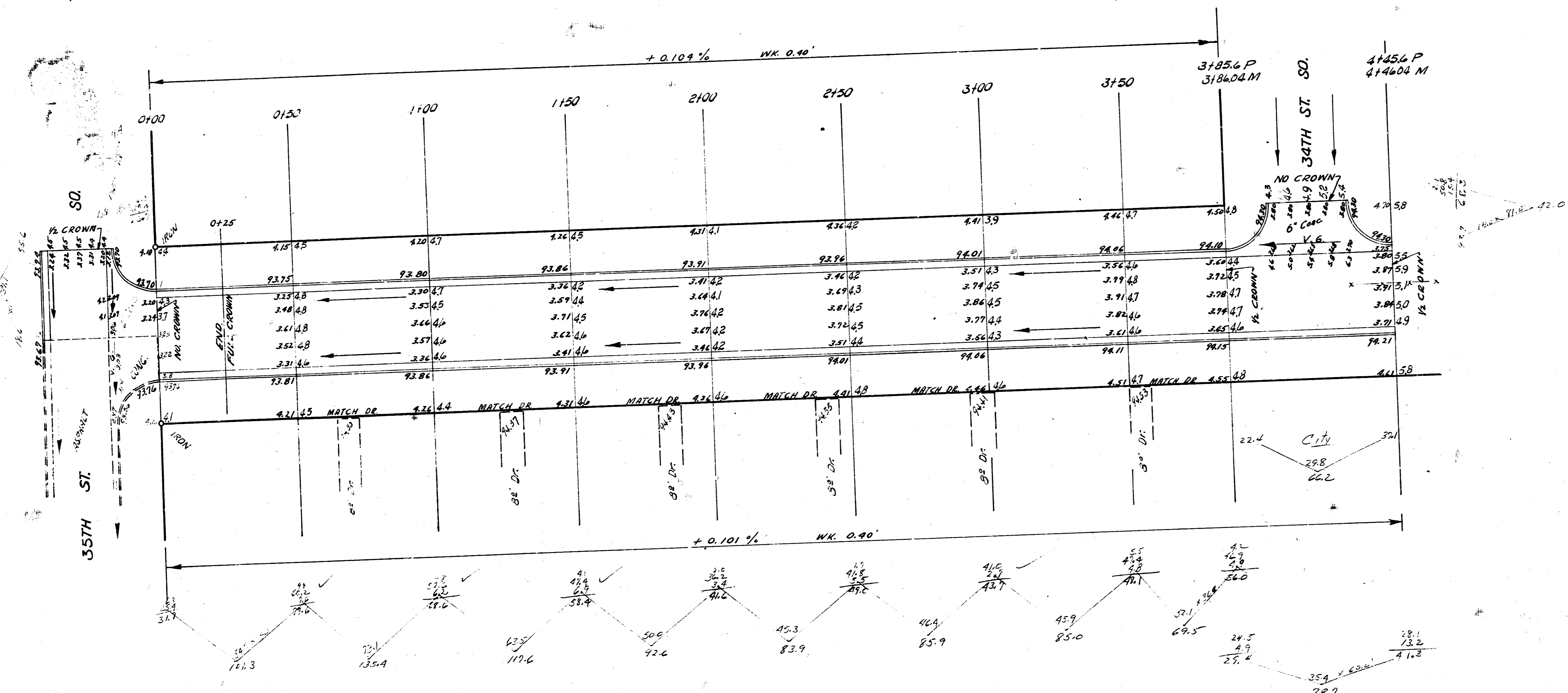


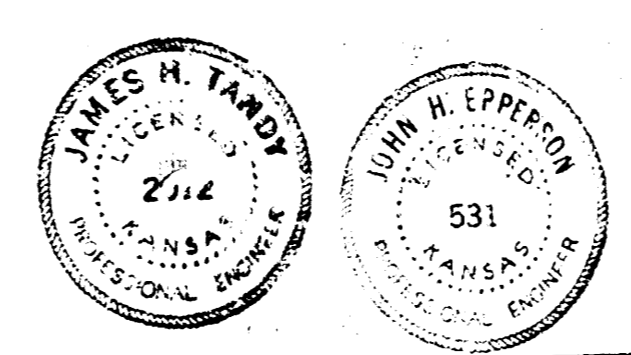
P.M. 96.04 S.W. Cor. Porch No N.E. Cor. St. Clair & 35th St. SO.
 Chaining No. on E. 12.

SCALE 1" = 20'



Survey Pits Stationed
 on St. Clair

Excavation City C.A.
 Prop. Cut 158.8
 +10% 79.47 Co. 464



ST. CLAIR AVE.
 SL 35TH ST. SO. to NL 34TH ST. SO.
 GOING WEST
 26-2-30 A.C.
 CITY OF WICHITA, KANSAS
 B. E. SMITH - CITY ENGINEER
 March 1958 PROJ. NO. C16-206