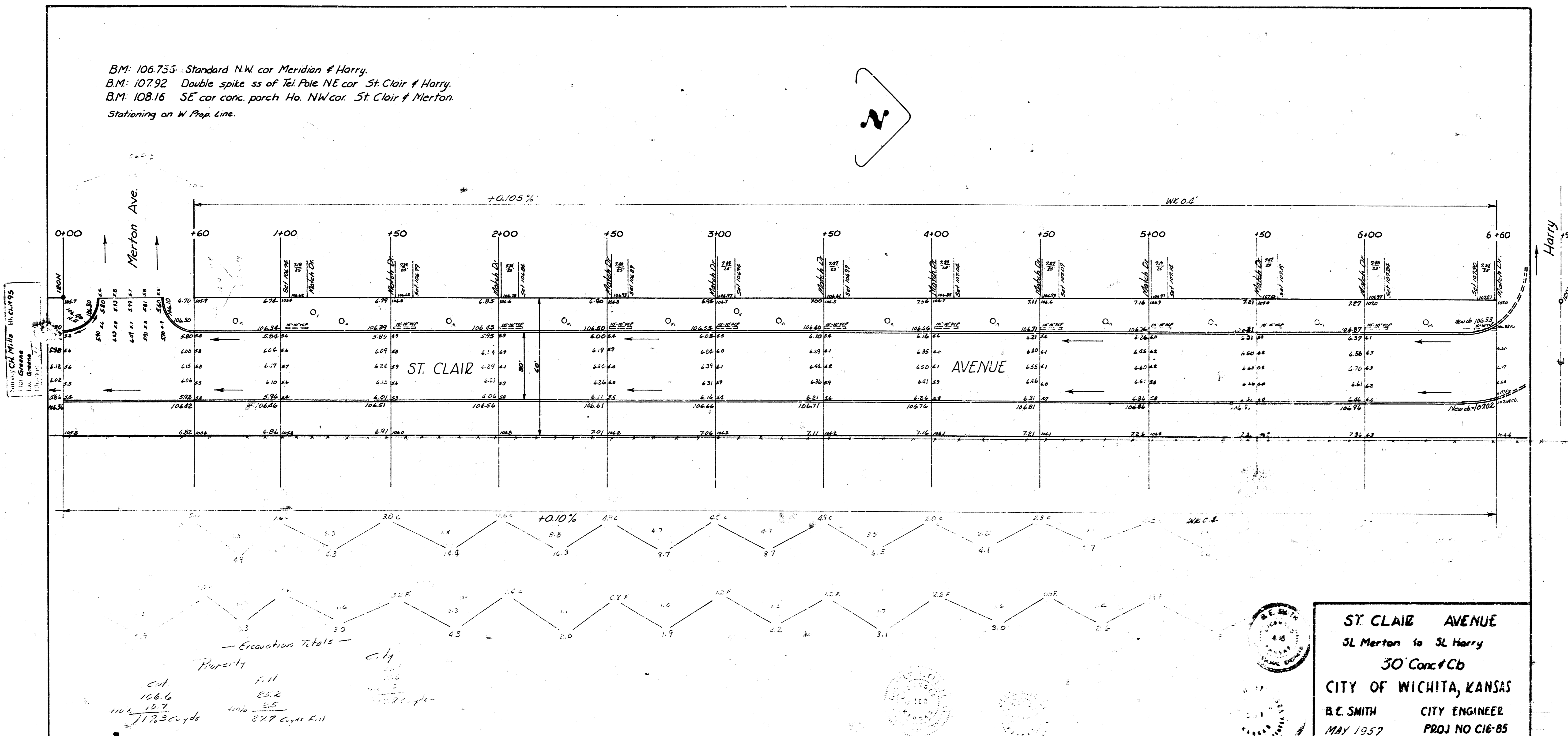
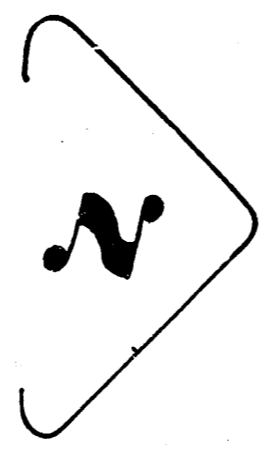


B.M. 106.733 Standard N.W. cor Meridian & Harry.
 B.M. 107.92 Double spike ss of Tel Pole NE cor St Clair & Harry.
 B.M. 108.16 SE cor conc. porch Ho. NW cor. St Clair & Merton.
 Stationing on W Prop. Line.



ST. CLAIR AVENUE
 St Merton to St Harry
 30' Conc & Cb
 CITY OF WICHITA, KANSAS
 B.E. SMITH CITY ENGINEER
 MAY 1957 PROJ NO C16-85