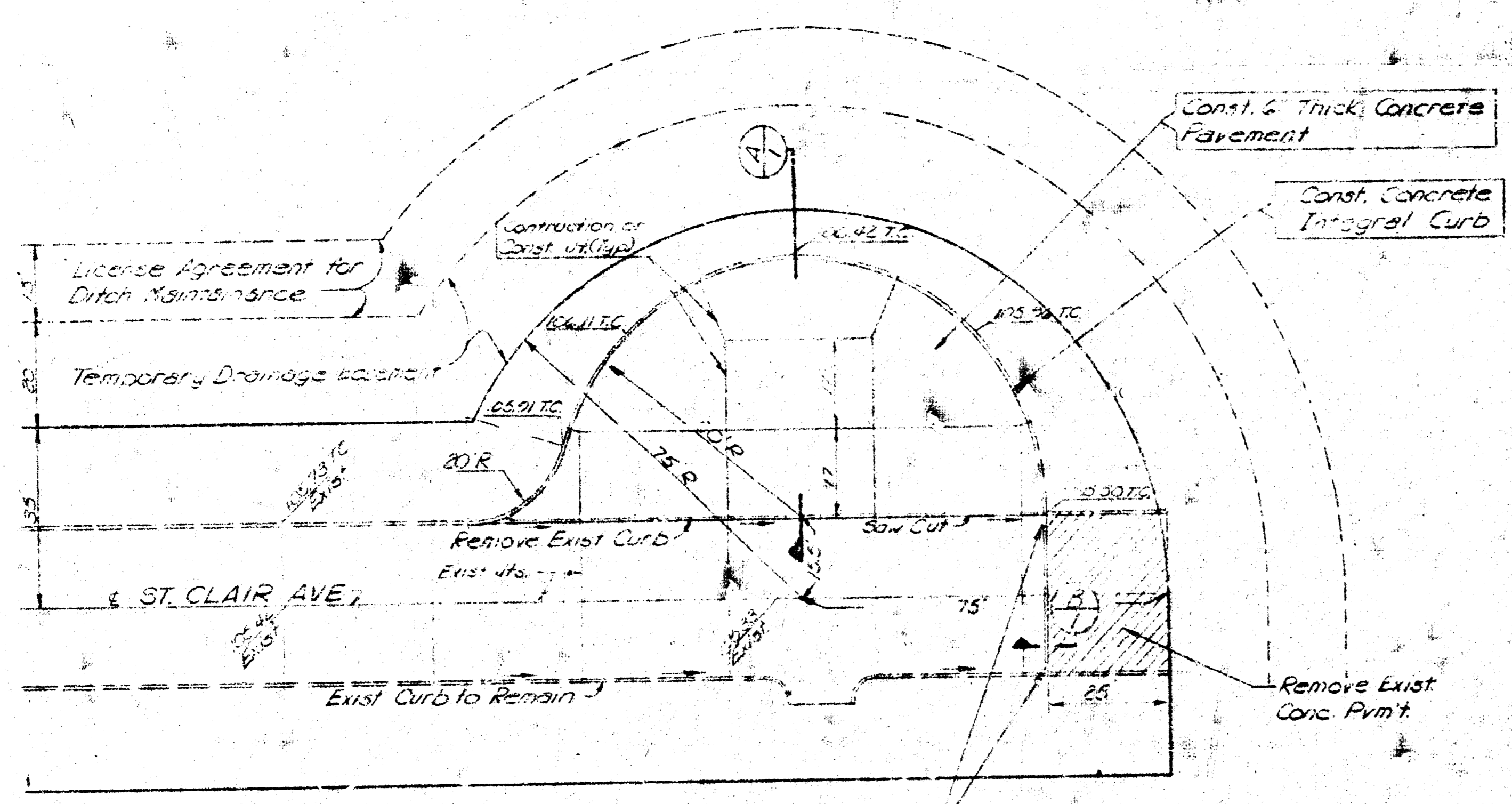


SCALE: 1"=20'

3/4" Chip 1" on top of Curb at
Top of St. Clair @ SW Corner
St. Clair & Merion Elev. 100.42
(City Datum)



Note: Contractor to backfill a minimum of
5' from all new curb construction.

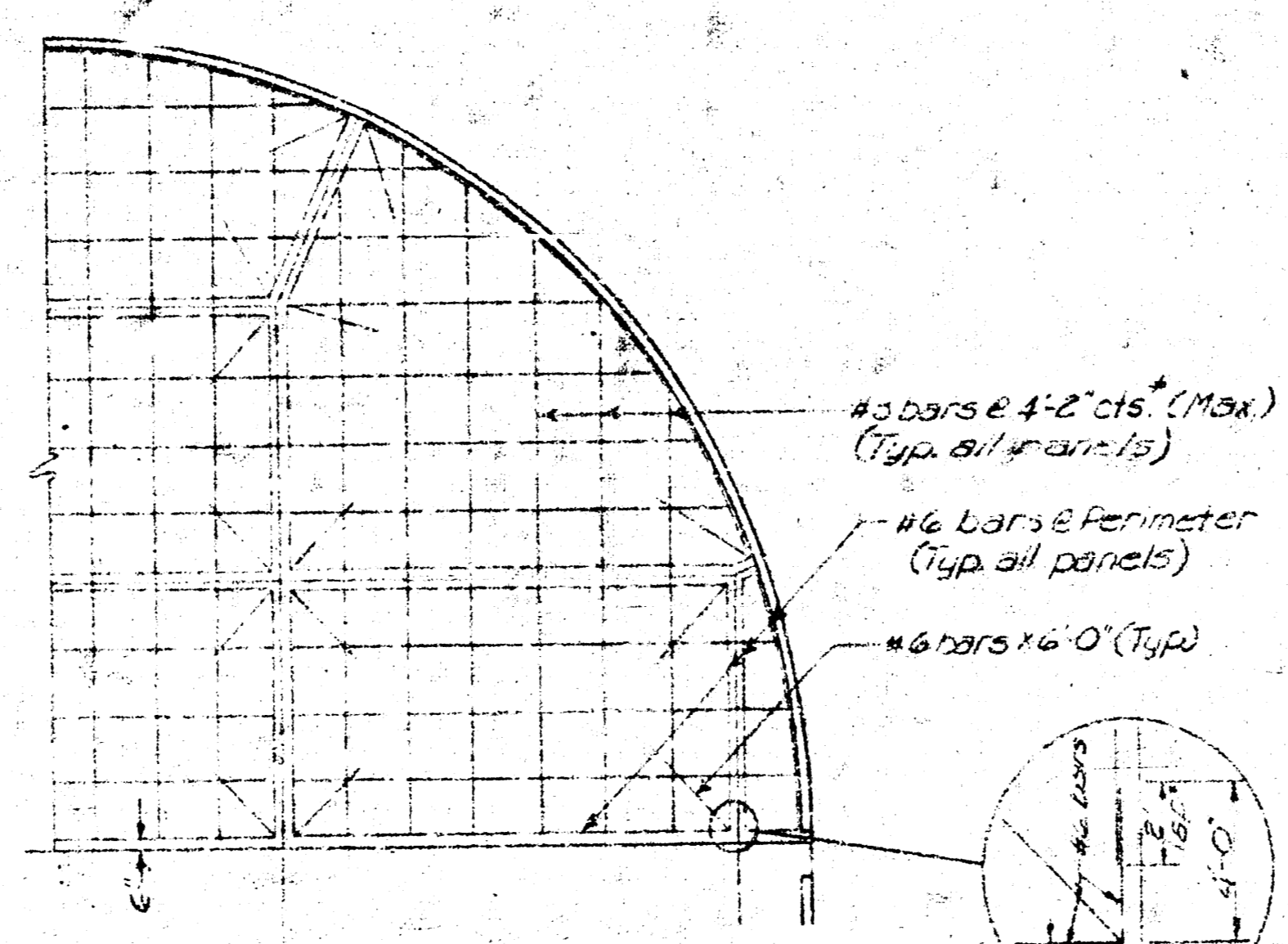
PLAN

GENERAL NOTES

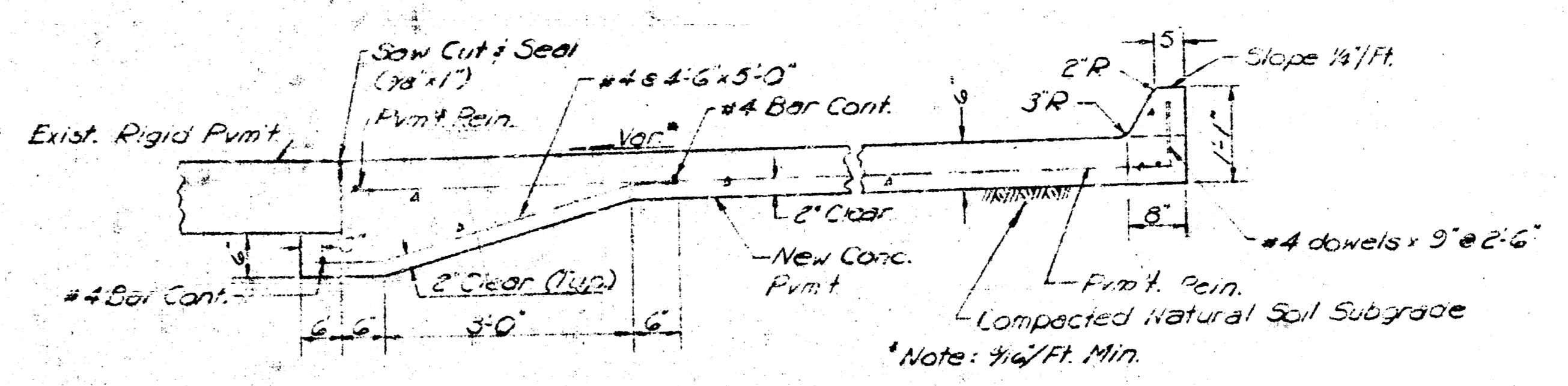
All materials shall conform to City of Wichita Specifications
All work shall be subject to inspection by the City of Wichita

NOTE TO CONTRACTOR
This project will be constructed under
the supervision of the CITY ENGINEER
and conforming to the SPECIFICATIONS
of the CITY OF WICHITA. The CON-
TRACTOR will reimburse the City of
Wichita for all cost of inspection.

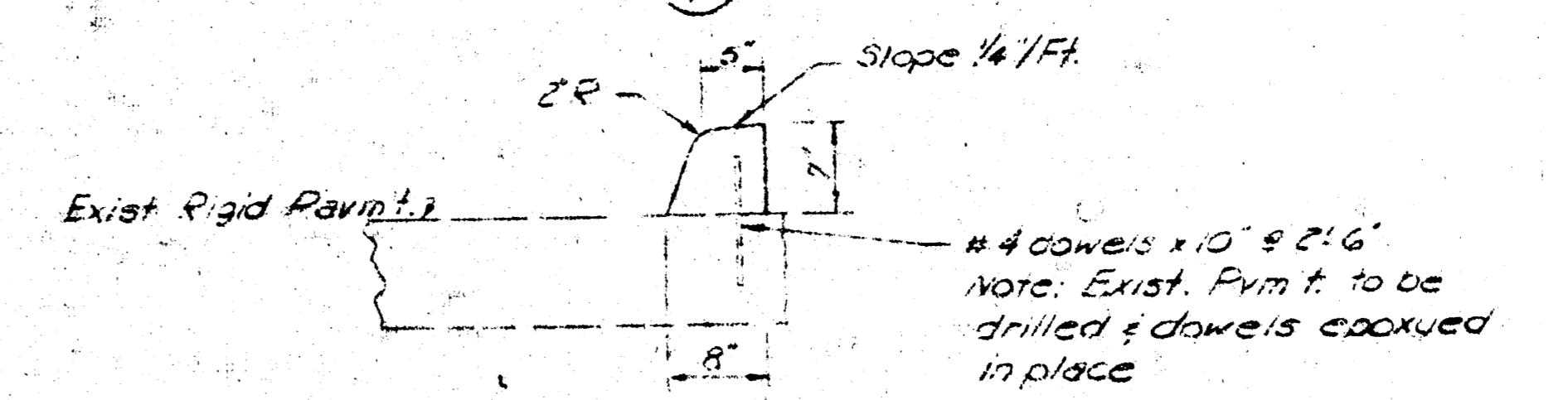
APPROVED: CITY OF WICHITA
Approved does not release the contractor
from the responsibility for correct or
incorrect work. See the official report
issued by the City Engineer or
Inspector.
4-25-73
Engineering Div. D.E.S.



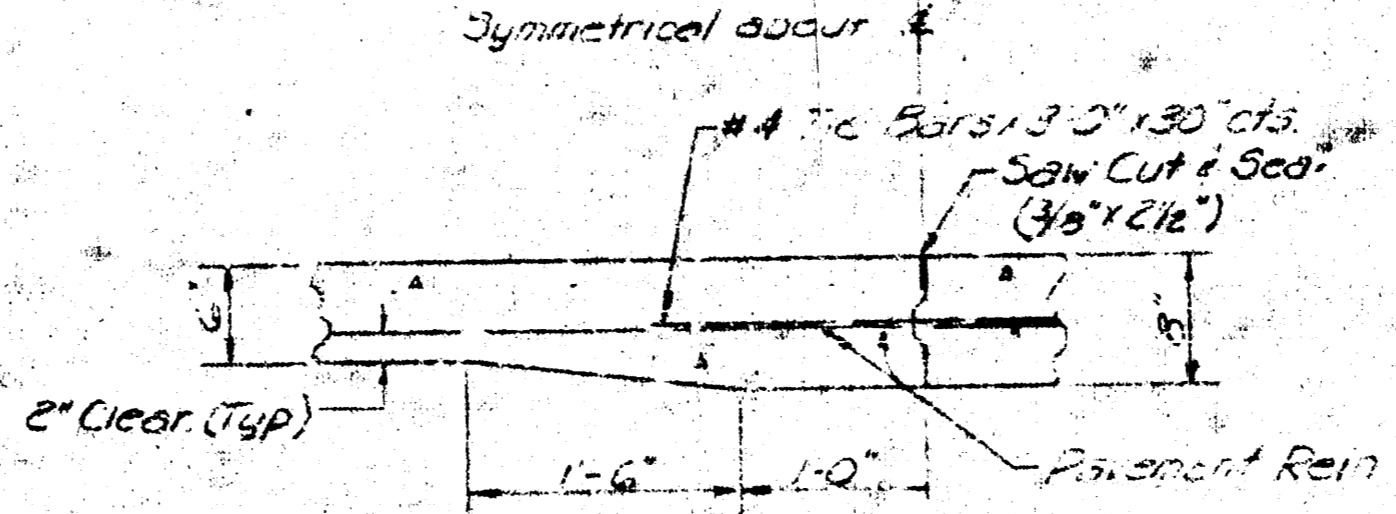
PAVEMENT REINFORCING PLAN



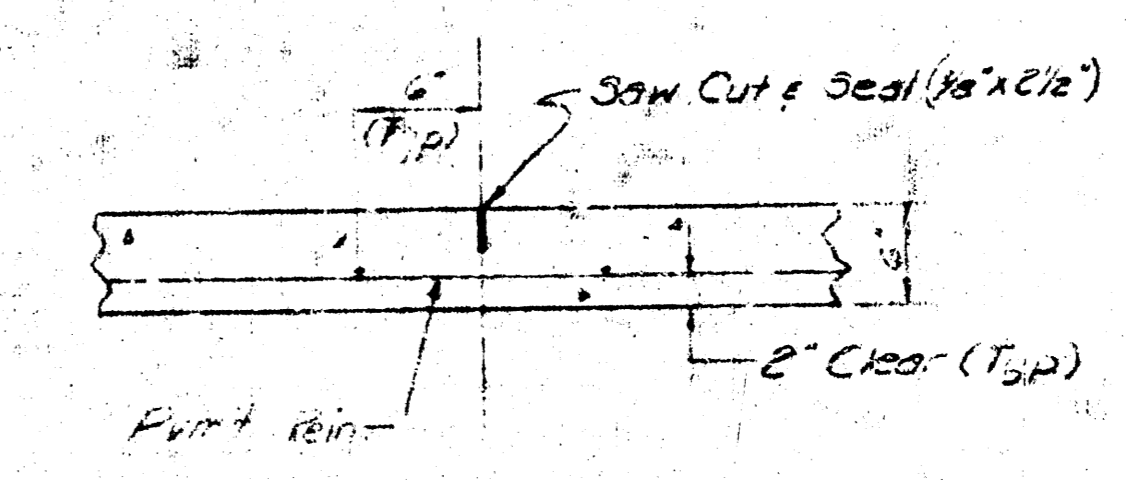
SECTION A-A



SECTION B-B



TYPICAL CONSTRUCTION JOINT C-C



TYPICAL CONTRACTION JOINT D-D

ESTIMATED ITEM	QUANTITY	UNIT
Const. Integral Curb	194.2	Lin. Ft.
6\"/>		

* Note: Typical all corners
of panels & all splices
#3 bars shall extend through
all contraction joints

Project No. BRK8503022
Santa Fe Orient
Industrial District
Proposed Improvements: St. Clair
Avenue South of Merion Avenue
PROFESSIONAL ENGINEERING CONSULTANTS
WICHITA, KANSAS