

D.M. 20251 NW COR. PORCH HO. # 1593 GENTRY

Excavated or widened  
drainage

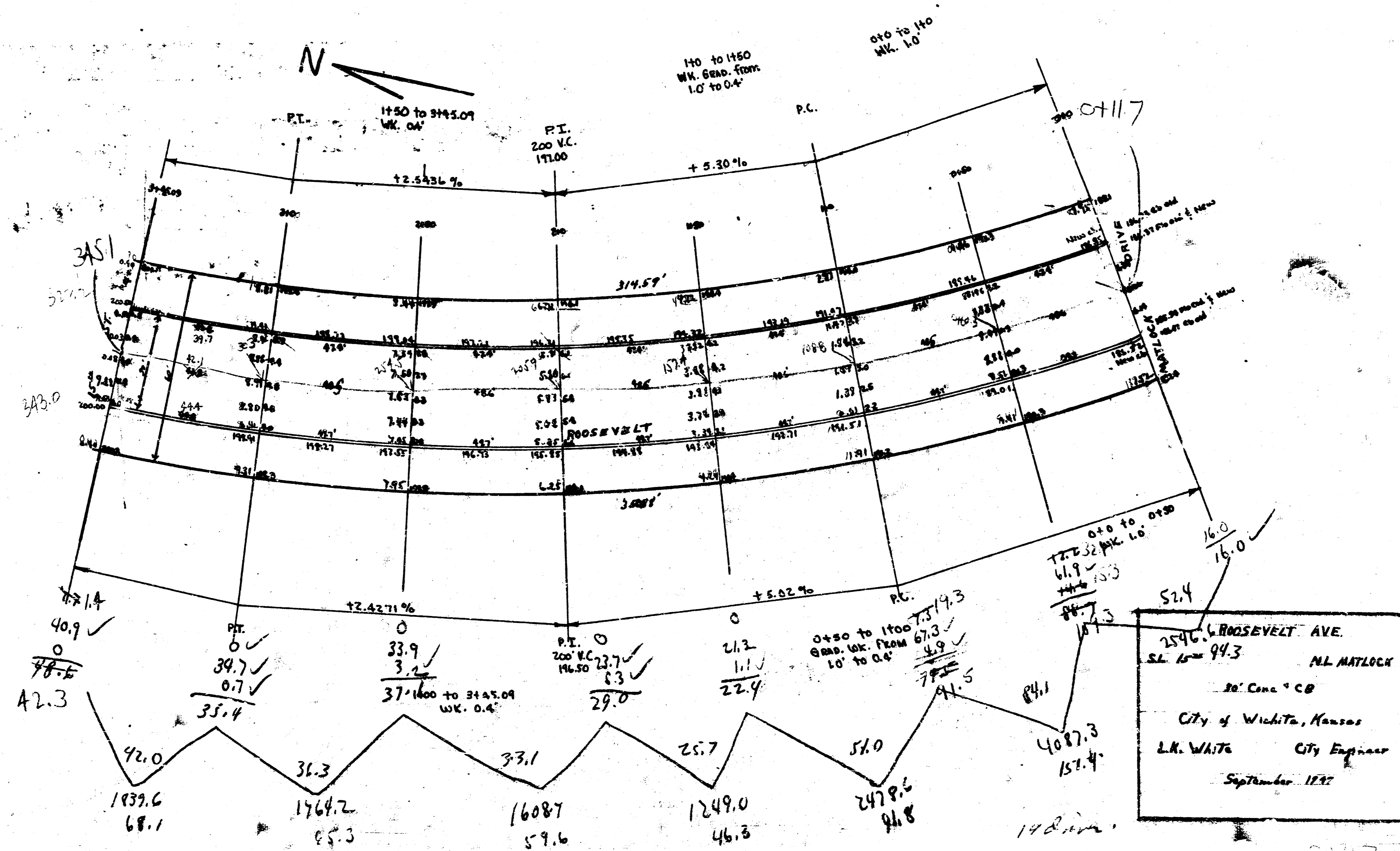
STATIONED ON 11' OFFSET FROM W.P.L.

Property

94.3  
151.4  
91.8  
46.3  
59.6  
65.3  
68.1  

---

576.8  
110% 576.6  
634.4 cu. yd.



2540 W. ROOSEVELT AVE.  
S.E. 1/4 - 94.3  
M.L. MATLOCK  
20' CONC. CB  
City of Wichita, Kansas  
L.K. WHITE City Engineer  
September 1935

2247 4121 5