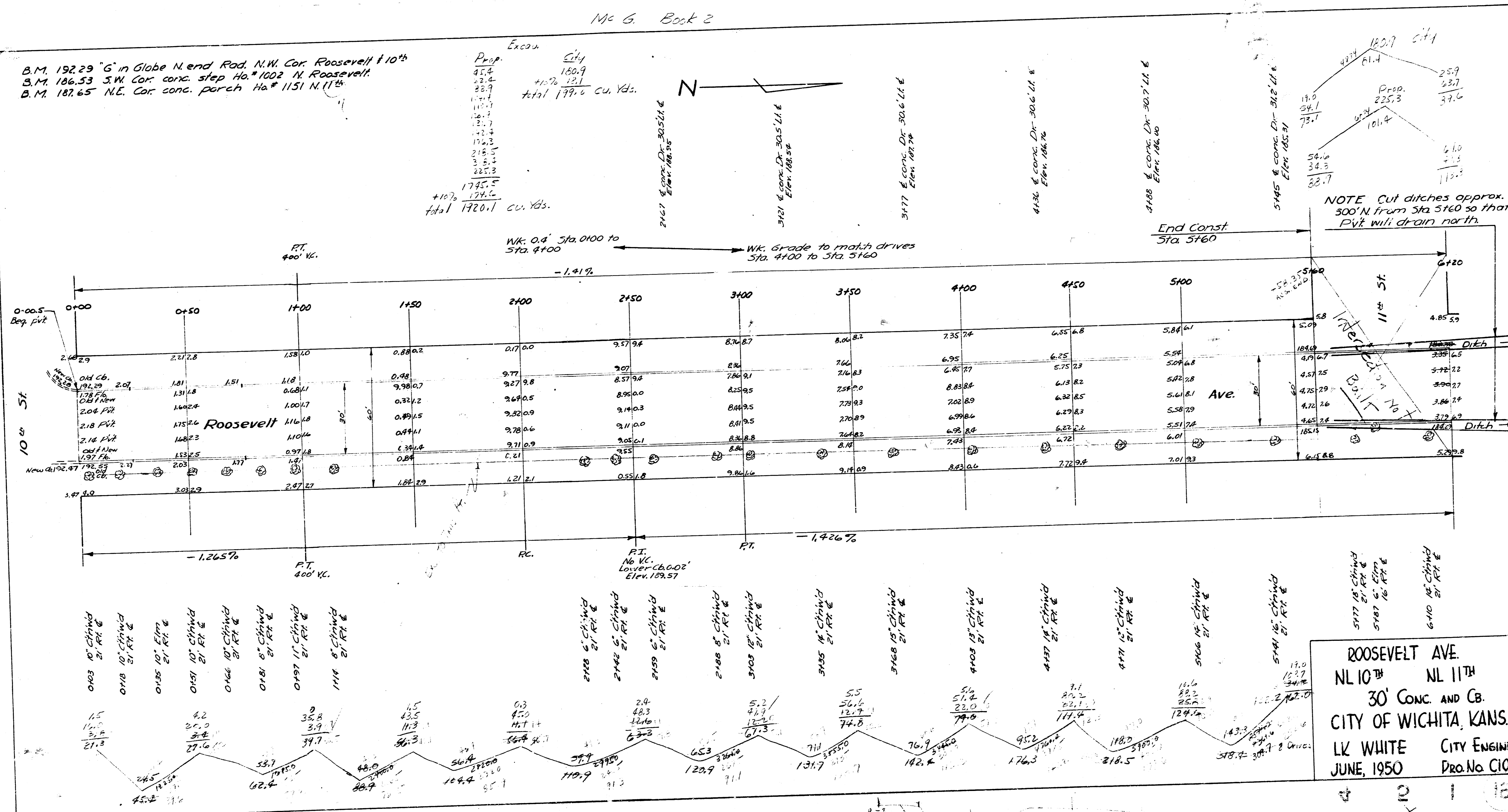
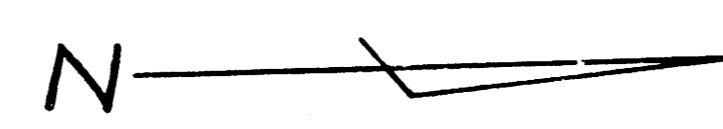


Mc G. Book 2

B.M. 192.29 "G" in Globe N. end Rod. N.W. Cor. Roosevelt & 10th
 B.M. 186.53 S.W. Cor. conc. step Ho. #1002 N. Roosevelt.
 B.M. 187.65 N.E. Cor. conc. porch Ho. #1151 N. 11th

Prop.	City
45.4	180.9
22.4	+10% 12.1
22.7	
11.7	
12.1	
11.3	
12.2	
12.3	
21.5	
3.5	
22.3	
174.5	
+10%	17.4
total 192.0 cu. Yds.	



ROOSEVELT AVE.
 NL 10th NL 11th
 30' CONC. AND CB.
 CITY OF WICHITA, KANS.
 LK WHITE CITY ENGINEER
 JUNE, 1950 PRO. No. C10-44

4 2 1 13