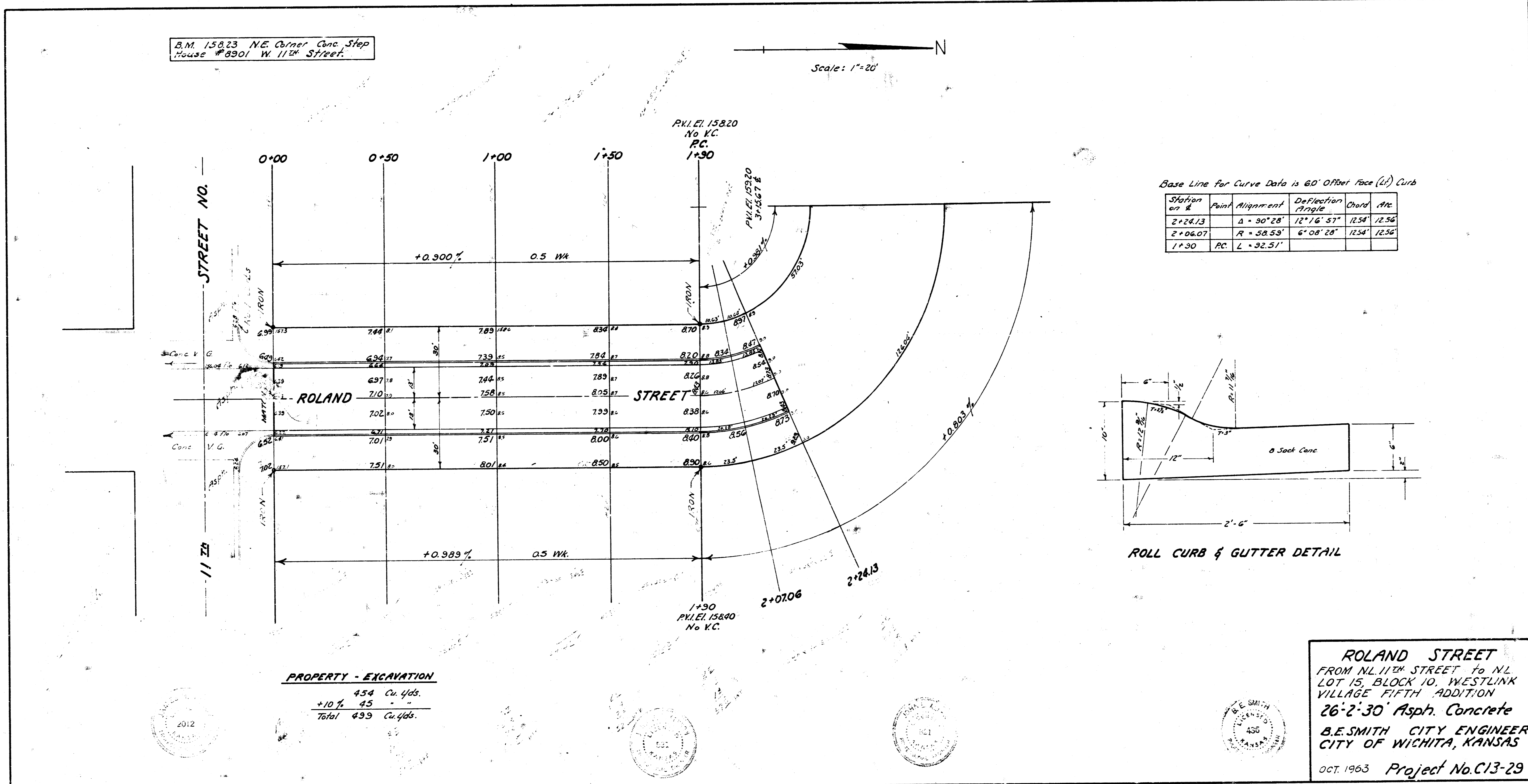


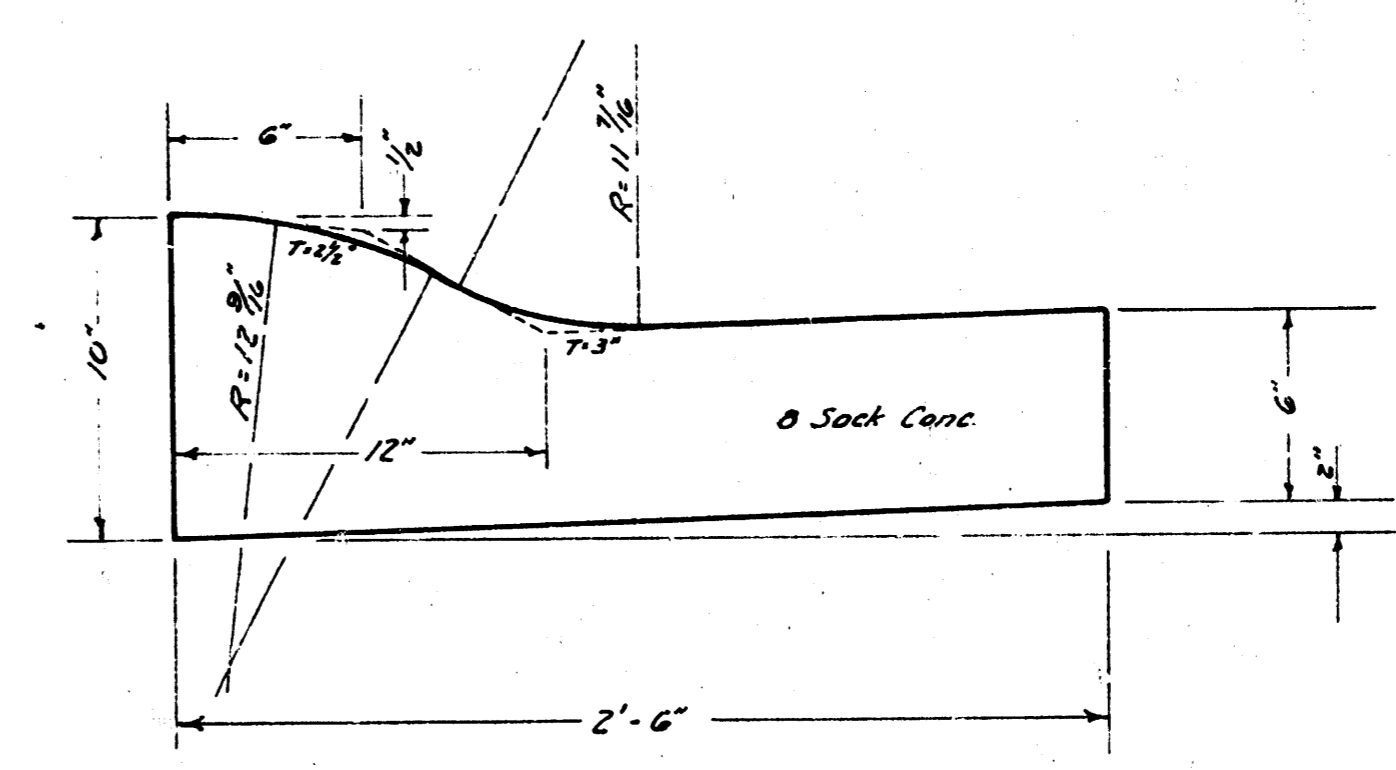
B.M. 15823 N.E. Corner Conc. Step  
House #8901 W. 11th Street

Scale: 1"=20'



Base Line for Curve Data is 60' Offset Face (L) Curb

Station on E	Point	Alignment	Deflection Angle	Chord	etc
2+24.13		$\Delta = 90^\circ 28'$	$12^\circ 16' 57''$	12.54'	12.56'
2+06.07		$R = 58.53'$	$6^\circ 08' 28''$	12.54'	12.56'
1+30	P.C.	$L = 92.51'$			



ROLL CURB & GUTTER DETAIL

**PROPERTY - EXCAVATION**  
 454 Cu. Yds.  
 +10% 45  
 Total 499 Cu. Yds.

**ROLAND STREET**  
 FROM N. 11th STREET to N. 12th STREET  
 LOT 15, BLOCK 10, WESTLINK VILLAGE FIFTH ADDITION  
 26'-2'-30" Asph. Concrete  
 B.E. SMITH CITY ENGINEER  
 CITY OF WICHITA, KANSAS  
 OCT, 1963 Project No. C13-29

