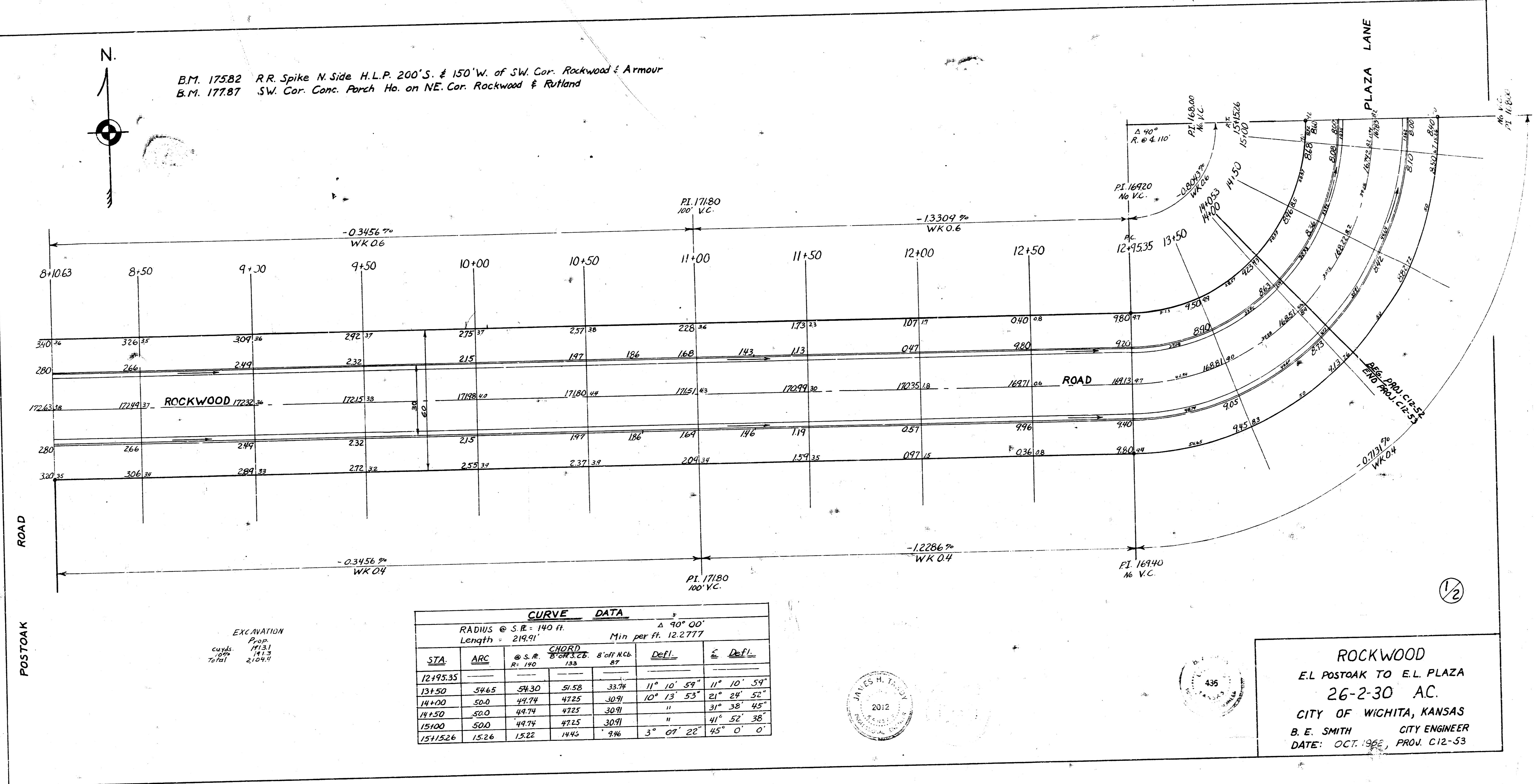


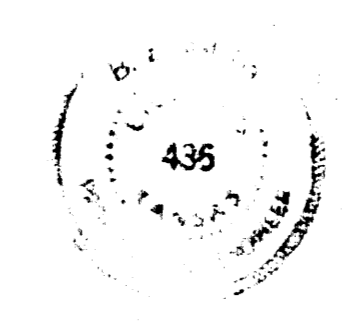
B.M. 17582 R.R. Spike N. Side H.L.P. 200' S. & 150' W. of SW. Cor. Rockwood & Armour
 B.M. 17787 SW. Cor. Conc. Patch Ho. on NE. Cor. Rockwood & Rutland



check by 1/16/81
 B.E. Smith
 City Engineer

EXCAVATION
 cu yds. 173.1
 141.3
 76.71

| CURVE DATA | | | | | | |
|-------------------------|-------|---------|---------------------|---------------|-------------|-------------|
| RADIUS @ S.R. = 140 ft. | | | Δ 90° 00' | | | |
| Length = 219.91' | | | Min per ft. 12.2777 | | | |
| STA. | ARC | @ S.R. | CHORD | 8' off M.C.B. | Defl. | Σ Defl. |
| | | R = 140 | 8' on 3.25 | 8' | | |
| 12+95.35 | | | | | | |
| 13+50 | 54.65 | 54.30 | 51.58 | 33.74 | 11° 10' 59" | 11° 10' 59" |
| 14+00 | 50.0 | 44.74 | 47.25 | 30.91 | 10° 13' 53" | 21° 24' 52" |
| 14+50 | 50.0 | 44.74 | 47.25 | 30.91 | " | 31° 38' 45" |
| 15+00 | 50.0 | 44.74 | 47.25 | 30.91 | " | 41° 52' 38" |
| 15+15.26 | 15.26 | 13.22 | 14.43 | 9.46 | 3° 07' 22" | 45° 0' 0" |



ROCKWOOD
 E.L. POSTOAK TO E.L. PLAZA
 26-2-30 AC.
 CITY OF WICHITA, KANSAS
 B. E. SMITH CITY ENGINEER
 DATE: OCT. 1966, PROJ. C12-53

1/2