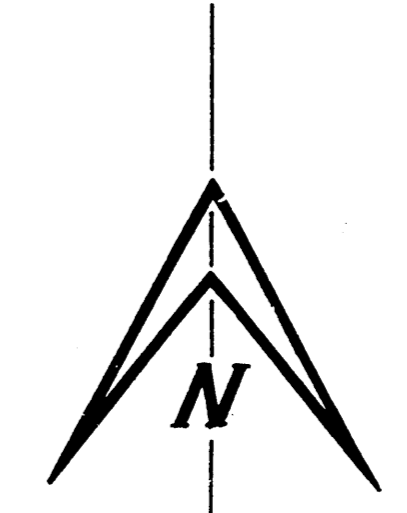
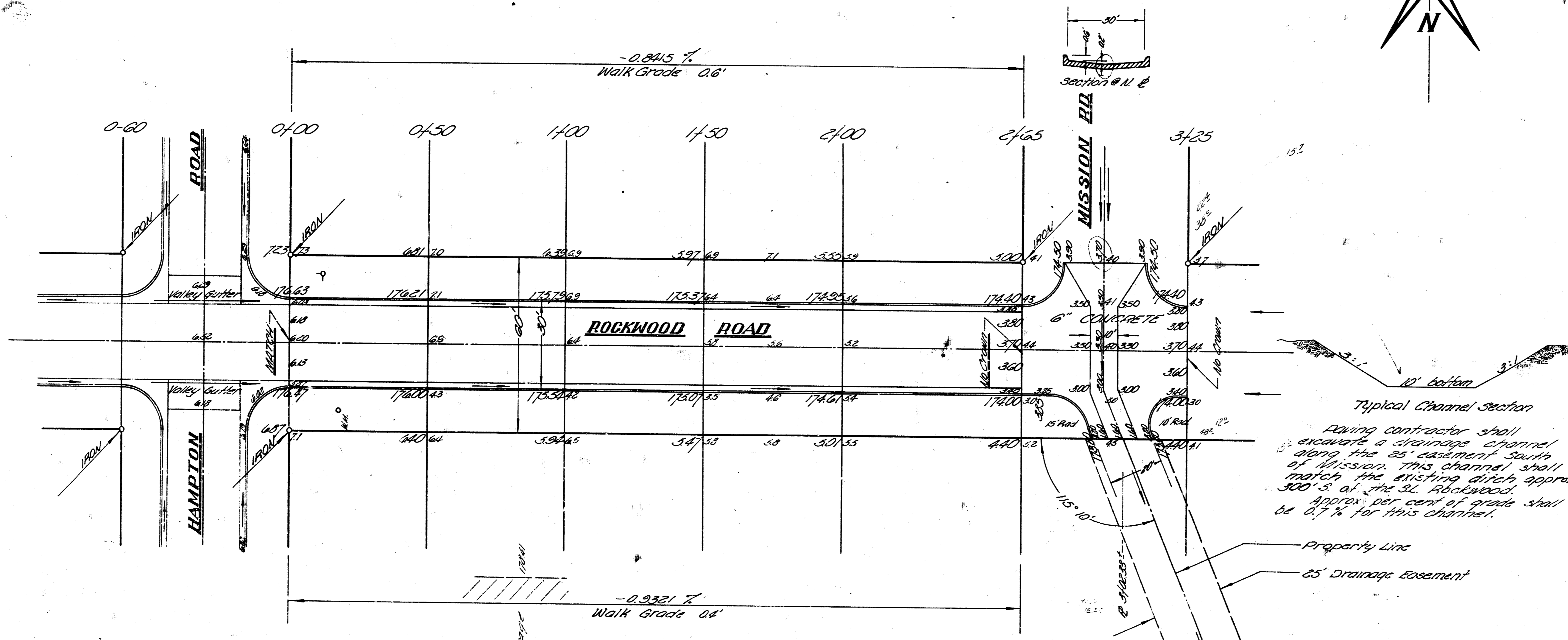


B.M. 179.78 S.W. cor stone slab on brick monument, W.L. Hampton & 10' S. of S.L. Cresthill Minor Adm.  
 B.M. 176.50 "R" in Rivet, South curb of Rockwood & E.L. Hampton.



SHEET 26-2-30 AC

Excavation	Comp. Fill
Prop. 674	Prop. 13.3
City 345.5	City 1.2
719.5	14.5

**ROCKWOOD ROAD**  
 E.L. Hampton, to E.L. Mission  
**26-2-30 AC**  
 City of Wichita, Kans.  
 B.E. Smith City Engineer  
 Date: Proj. No. 611-12

