

Nowak Construction Co., Inc. - Contractor
Baughman Co. - Inspector
Released 8/10/07
As-Built
Strubs
.pdf by JDL 8/17/07

SANITARY SEWER IMPROVEMENTS to serve SAVINA 5TH ADDITION - PH. I

CITY OF WICHITA, KANSAS

James L. Armour, P.E. City Engineer
Private Project Number
1777 PPS (607861)

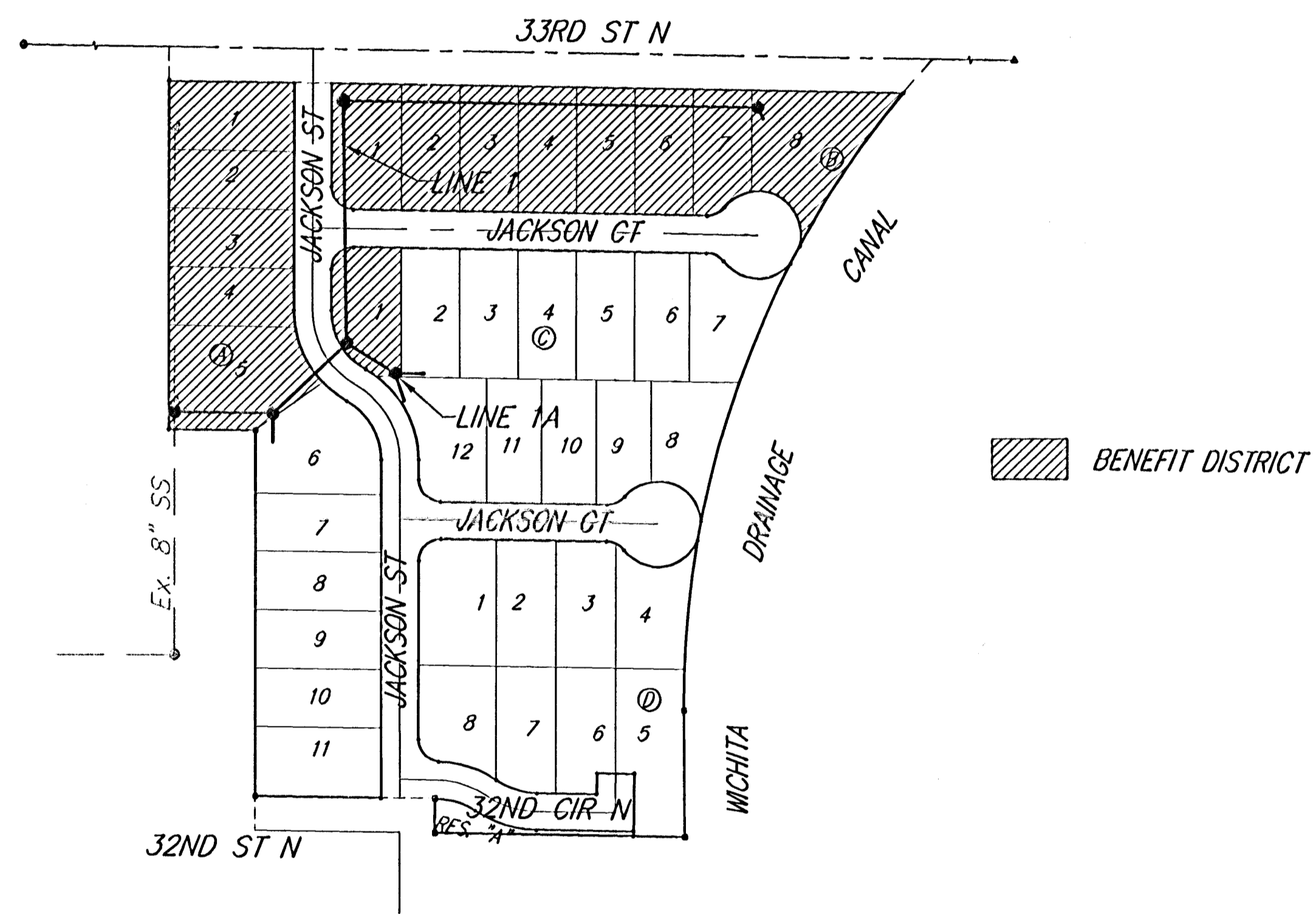
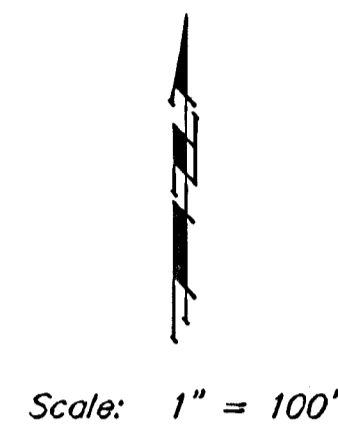
Benchmarks

BM #1: ARKANSAS AND 33RD ST. N.
C.O.W. BENCHMARK
32.00 FT SOUTH OF CENTERLINE OF
33RD ST. GOING EAST
22.00 FT EAST OF CENTERLINE OF
ARKANSAS
ELEV= 1317.21 (NGVD 29)
ELEV= 129.81 (CITY DATUM)

BM #2: C.O.W. DISK NE BRIDGE
HEADWALL 33RD AND DRAINAGE
CANAL
ELEV= 1320.98 (NGVD29)
ELEV= 133.58 (CITY DATUM)

Sheet Index

Title Sheet	1
Lines 1 & 1A	2
Shallow Manhole Detail	3
Ring & Cover Detail	4
Erosion Control/Esmt. Grading Plan	5
Erosion Control BMP Details	6-9
Coordinate Sheet	10
Copy of Plat	11



GENERAL NOTES:

- Contractor will be required to provide notice to utility companies a minimum of forty-eight (48) hours prior to any excavation, as follows:

Kansas One-Call	687-2470
Cox Communications	262-4270
Kansas Gas Service	1-888-482-4950
Westar Energy	383-8650
Aquila Energy	1-800-303-0357
AT&T	268-2245
City of Wichita Water Dept.	268-4563
City of Wichita Sewer Maint.	268-4024
City of Wichita Storm Sewer Maint.	268-4090
City of Wichita Traffic Maint.	268-4034
Conoco Phillips Pipeline Co.	1-377-267-2290
Southern Star Pipeline Co.	529-6600
Kinder-Morgan Pipeline Co.	1-888-844-5668

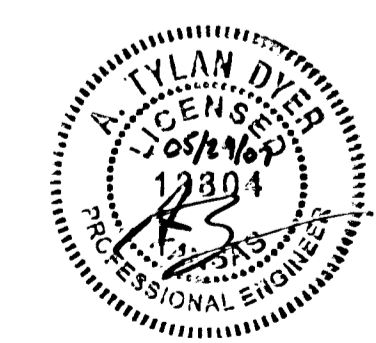
The Contractor must notify the following in case of an emergency:
- Utility service lines, poles, valve boxes, meters, and etcetera are to be adjusted as necessary by others prior to construction unless the plans specifically call for their adjustment by the Contractor or unless the plans specifically identify a utility to be adjusted by its owner during construction. Existing utilities and their location, as shown on the plans, represent the best information obtainable for design. The Contractor will be required to work around existing utilities within the right-of-way which do not conflict with proposed construction.
- Rubble from the removal of miscellaneous structures can be disposed of on site. All excess excavation shall remain on site. These sites shall be approved by the Engineer as to suitability, appearance and site location. Locations, in the opinion of the Engineer, that will leave an unsightly appearance will not be approved. All disposal sites must be approved by the Kansas Department of Health and Environment. Material either stockpiled or disposed of in a flood plain would require a Kansas State Board of Agriculture permit. Any material dumped in waters of the United States or wetlands is subject to U.S. Corps. of Engineers permitting regulations. Any material buried or stockpiled beyond approved construction limits would require additional archaeological investigations unless buried in a previously approved borrow location.
- Trees and shrubs in public right-of-way which are in direct conflict with proposed new construction shall be removed by the Contractor with the Engineer's approval. Trees and shrubs which are not in direct conflict with proposed new construction shall be saved and protected from damage.
- The Contractor shall give all property owners and/or tenants of developed property obutting the construction of this project a minimum of ten (10) days notice prior to start of construction.
- The Contractor shall be responsible for preserving property irons. The Contractor will be required to re-establish any property irons which are damaged or destroyed by his construction operations. Such irons shall be re-established by a licensed land surveyor in accordance with state laws.
- All existing and proposed erosion control measures including silt fencing, erosion control mat, straw bales, inlet barriers, and const. entrance shall be maintained throughout construction by the contractor and until project is accepted by the City of Wichita. The on-site engineer shall complete weekly reports on the status of erosion control measures. The contractor shall be required to comply with maintenance and/or replacement of erosion control measures as determined by the on-site engineer until project is accepted by City of Wichita. Maintenance and/or replacement of erosion control measures to be paid by L.S. bid item "Site Clearing & Restoration".
- The Contractor shall be responsible for maintaining continuous flow of sewage through construction. Contractor's proposed method for maintaining sewage flow shall be approved by the Engineer. Cost of maintaining flow of sewage through construction will not be paid for directly and this cost shall be considered as subsidiary to the other pay items of work.
- All areas disturbed during construction (except adjacent to street) shall be seeded at 300 lbs./acre with Ryegrass immediately following construction in that area. Contractor shall prepare ground per City Specifications.

APPROVED AS NOTED
BY CITY ENGINEER OF WICHITA

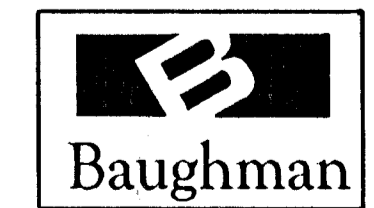
Sanitary Sewers VRH 5/24/07

NOTE TO CONTRACTORS

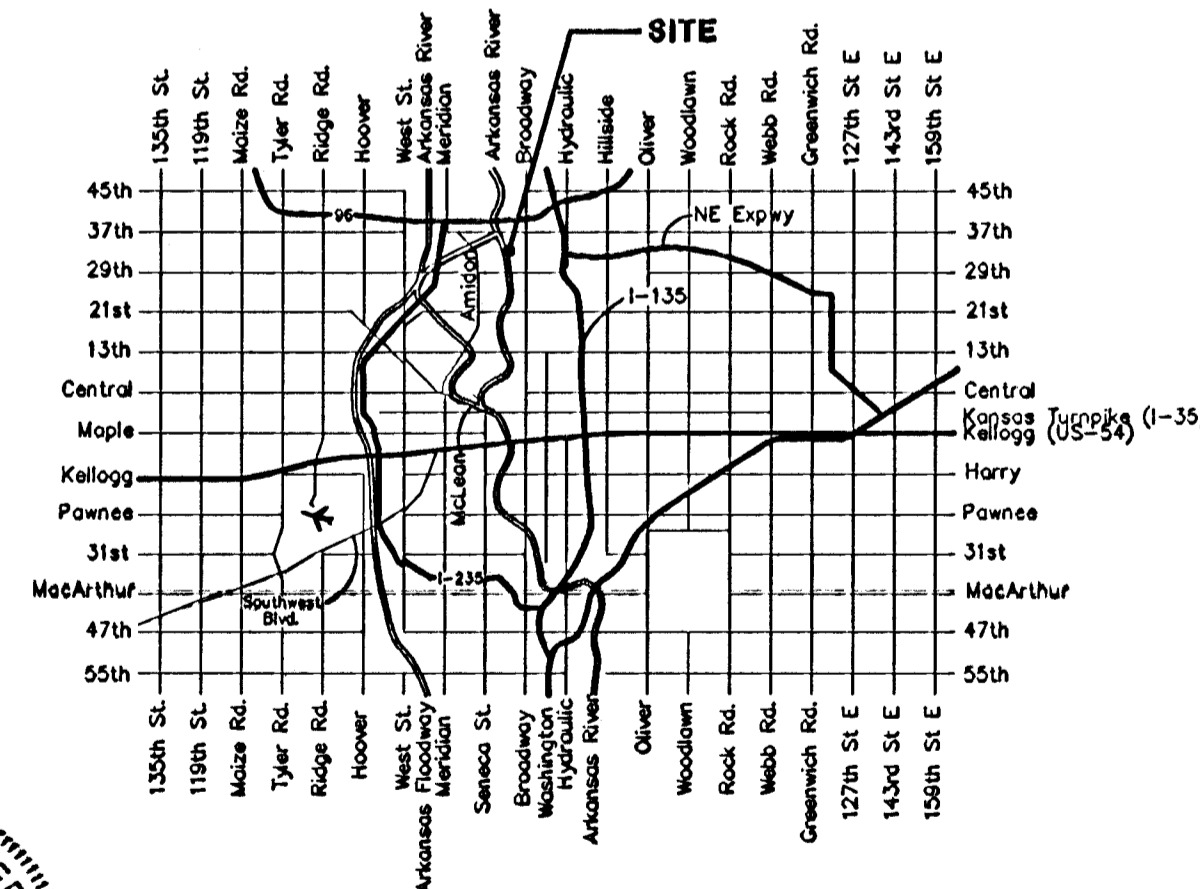
Installation, inspection and testing for this project is to be provided by a Licensed Consulting Engineering Firm under contract with the Owner/Developer. Said inspection to be in accordance with the City of Wichita standard construction engineering practices and certified by a Licensed Professional Engineer. No work shall be performed in dedicated easements or public right-of-way by the Contractor without such inspection nor shall any work be commenced without written authorization by the City Engineer. All Construction and Materials shall comply with the City of Wichita Specifications and Standards (on file and available in the City Engineer's Office).



Final Plans
05/24/07 ATD



Vicinity Map



As Built 7/3/07 K.K.

Baughman Company, P.A. 315 Ellis St. Wichita, KS 67211 P 316-262-7271 F 316-262-0144
ENGINEERING | SURVEYING | PLANNING | LANDSCAPE ARCHITECTURE

AS BUILT 7/3/07 SS for Sanitary Sewers 5th Addition Ph. I
1777 PPS