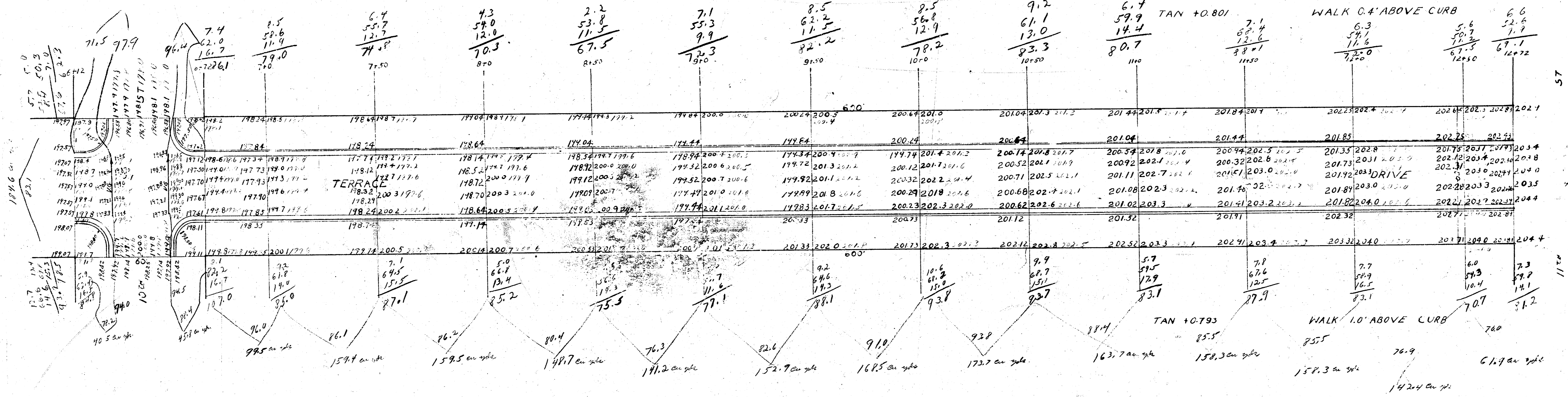


1341

TERRACE DRIVE - SL. 9TH TO SL. 11TH
 1" SHEET ASPHALT ON 4" BLACK BASE

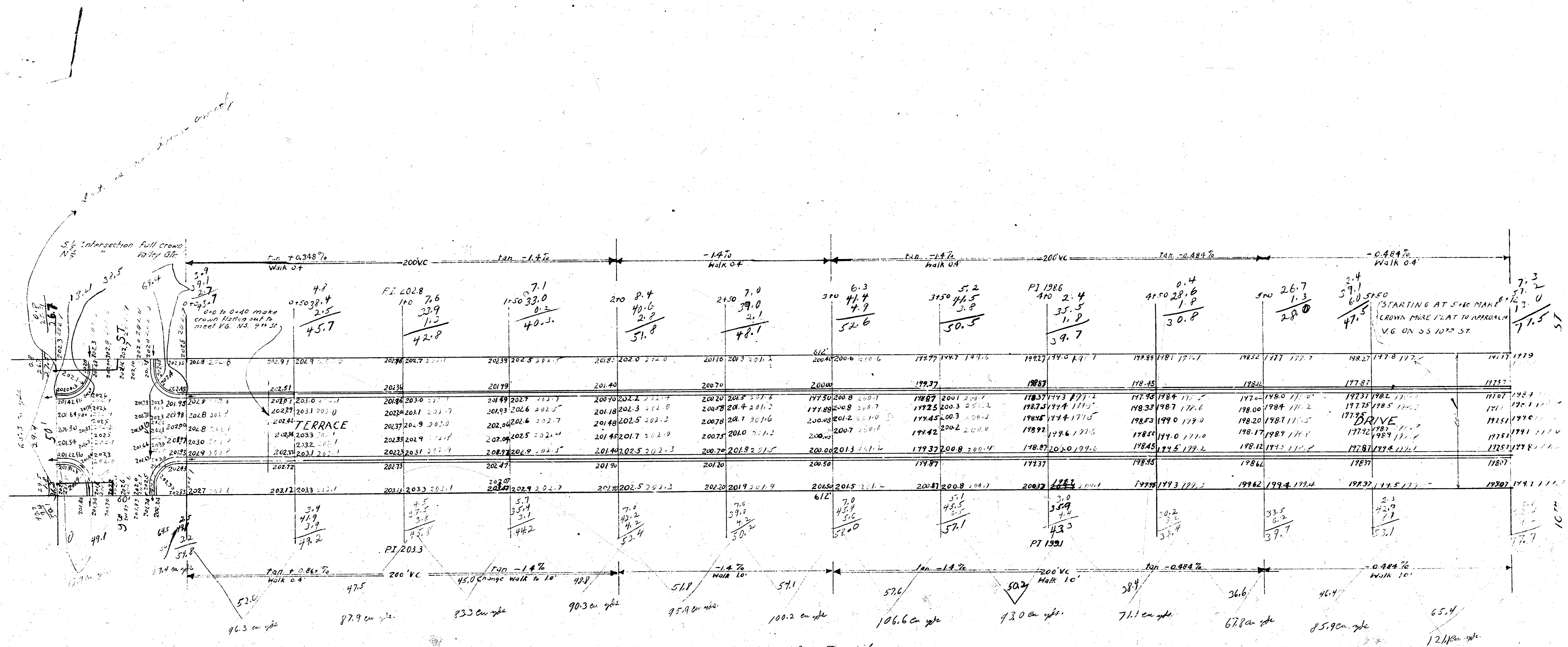
44 JAWED

NOTE - 6 conc. pavement in Valley Gutters 6" wide
 Road in line with E & W curb edges. Low
 point in gutter center of Valley Gutters
 3" steel sucker rods in pavement in
 valley gutters. 2 Longitudinal, Transverse 4" oc
 PLB



Property	City
79.5	144.6
159.4	40.5
149.5	45.8
141.2	
152.9	
168.5	
122.7	
163.7	
154.3	
150.3	
142.4	
61.9	
1882.0	270.9 cu yds

PROPERTY	2987.4	+	298.7	=	3286.1
CITY	378.5	+	37.9	=	416.4
					TOTAL 3702.5 cu yds



B.M. Elev 20180 End of east curb @ S.L. 9th St.

Property	Edge
96.3	51.5
87.9	12.7
83.3	29.4
80.3	
98.9	107.6 cu yds
100.2	
106.6	
83.0	
71.1	
67.8	
85.9	
121.1	
1099.4	51.5 yds