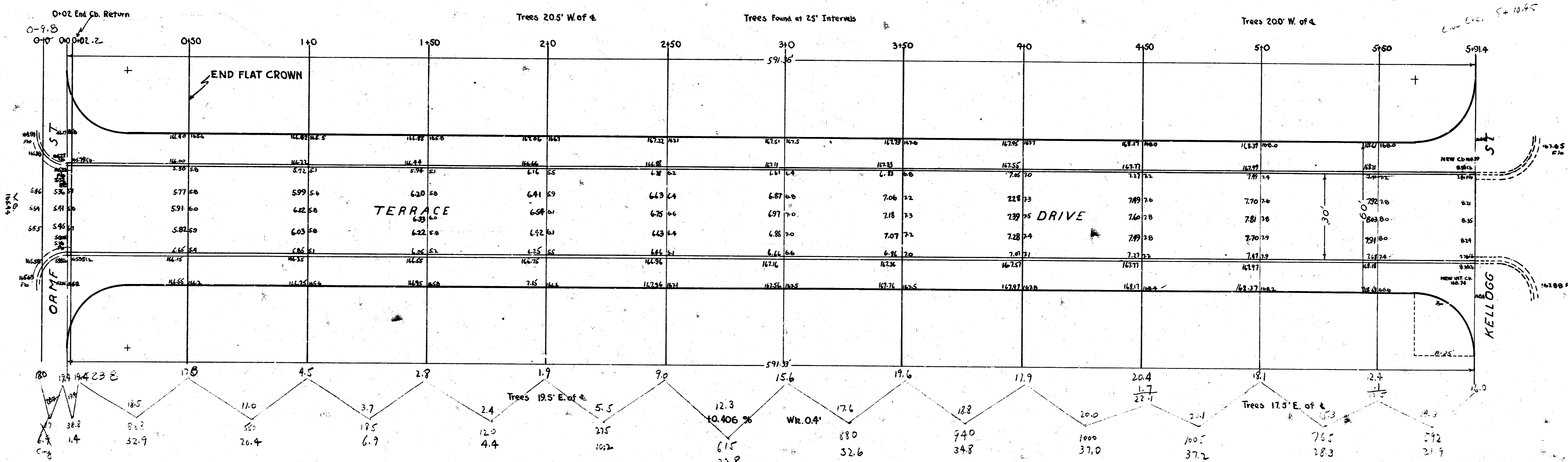


B.M. 168.26 W. Ch. Terrace Dr. @ S.L. Kellogg  
 B.M. 165.95 "X" on E. Ch. Terrace Dr. N.L. Orme

+0.442% W.R. 0.4'



Prop 240.8  
 +10% 28.1  
 319.9 angle  
 City 6.9  
 +10% 7.6 angle



TERRACE DRIVE  
 S.L. KELLOGG TO N.L. ORME  
 30' CONCRETE & C.B.  
 CITY OF WICHITA, KANSAS  
 L. K. WHITE CITY ENGINEER  
 JUNE 1946